

MICHIGAN DEPT. OF LABOR & ECON. GROWTH/LABOR MARKET ANALYSIS - SOUTH CENTRAL MICHIGAN  
CIVILIAN LABOR FORCE ESTIMATES

By Place of Residence/Seasonally Unadjusted. October, 2008 \*\*

Areas	CIVILIAN LABOR FORCE					EMPLOYMENT					UNEMPLOYMENT RATES		
	Oct. 2008	Sept. 2008	Oct. 2007	Monthly Change	Annual Change	Oct. 2008	Sept. 2008	Oct. 2007	Monthly Change	Annual Change	Oct 08	Sept 08	Oct 07
Jackson MSA	75,200	74,500	76,300	700	-1,100	68,100	67,600	71,200	500	-3,100	9.4	9.3	6.8
Hillsdale Co.	21,700	21,400	22,050	300	-350	19,350	19,125	20,275	225	-925	10.8	10.6	8.0
Lenawee Co.	49,500	49,200	50,350	300	-850	44,425	44,175	46,575	250	-2,150	10.2	10.2	7.5
Michigan U.S.A.*	4,932,000	4,920,000	4,998,000	12,000	-66,000	4,510,000	4,513,000	4,661,000	-3,000	151,000	8.6	8.3	6.7
	155,012	154,509	153,516	503	1,496	145,543	145,310	146,743	233	-1,200	6.1	6.0	4.4

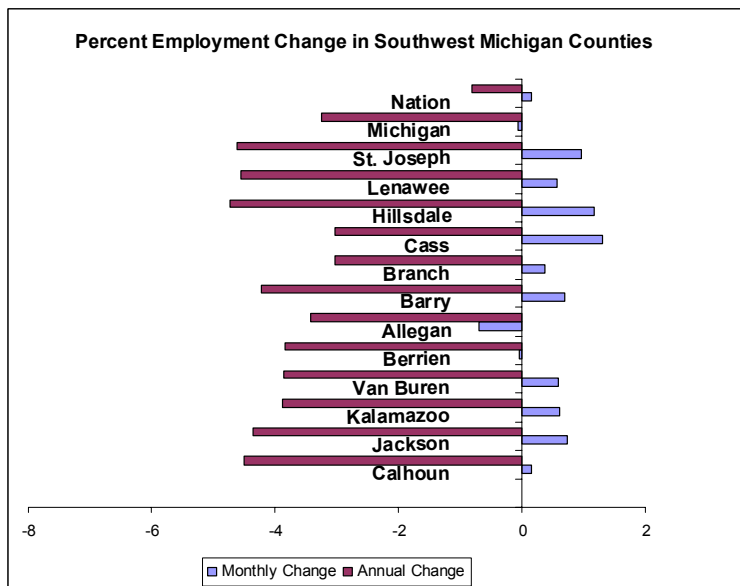
\* Expressed in thousands; \*\* All labor force and employment numbers are rounded to the nearest 25 for counties, 100 for MSAs, and 1,000 for the State and the U.S.

### October Jobless Rates Stable in Regional Counties

Jobless rates displayed little change in October, declining slightly in four regional counties (Berrien, Branch, Kalamazoo, and St. Joseph), while inching up in six counties. Unemployment rates in Calhoun and Lenawee counties remained unchanged over the month. Area counties continued to record seasonal job gains in the private and public education sectors, which were partially offset by seasonal employment declines in leisure and hospitality.

### Labor Force Mostly Up Over the Month but Down Over the Year

Labor force was up over the month in all regional counties but Allegan and Berrien. In October, labor force levels can expand as persons begin looking for temporary holiday-related positions. Labor force increases ranged from +75 in Branch to +700 in Jackson County.



Over the year, labor force fell in all regional counties, ranging from -25 in Branch to -2,350 in Kalamazoo County.

### Employment by Place of Residence Mostly Up Over the Month but Down Over the Year

Over the month, employment by place of residence rose in almost all regional counties, with the exception of Allegan (-350) and Berrien (-25) counties. In October, private and public education institutions returned to full staffing, which was enough to more than offset the seasonal job cuts in leisure and hospitality. Employment gains in

October ranged from +75 in Branch to +750 in Kalamazoo County.

Over the year, employment was down in all regional counties, ranging from -625 in Branch to -4,975 in Kalamazoo County.



310 W. Bacon Street, Hillsdale, MI 49242  
517-437-0990 [www.scmw.org](http://www.scmw.org)



**Jobless Rate Changes Mixed Over the Month but Substantially Up Over the Year**

Four regional counties (Berrien, Branch, Kalamazoo, and St. Joseph) recorded small unemployment rate declines averaging one tenth of a percentage point. Jobless rates inched up in six counties (Allegan, Barry, Cass, Hillsdale, Jackson, and Van Buren). Rates remained unchanged in Calhoun and Lenawee counties. Seven regional counties recorded lower rates than the statewide rate of 8.6 percent in October (Kalamazoo, Barry, Cass, Allegan, Calhoun, Van Buren, and Berrien). The remaining counties registered higher jobless rates than the state.

Over the year, unemployment rates were up substantially in all regional counties by an average of 2.5 percentage points. St. Joseph County recorded the highest jobless rate increase over the year (+3.3 percentage points).

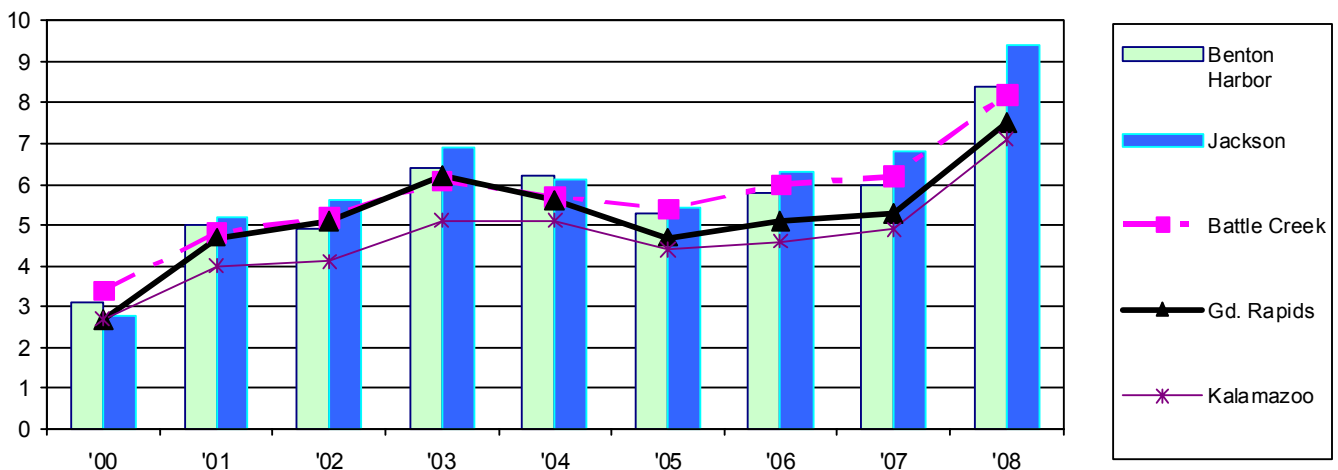
From October 2000 to October 2008, jobless rates rose in the Jackson (+6.6), Niles-Benton Harbor (+5.3), Grand Rapids (+4.8), Battle Creek (+4.8), and Kalamazoo (+4.4 percentage points) metro areas.

October unemployment rates rose from 2000-2003, fell in 2004 and 2005, and began to rise again in 2006 in all regional metropolitan areas. October 2008 metro area jobless rates set new record highs during this decade for the month of October.

**Local MSA October Unemployment Rates Since 2000**

Year \ Areas	00	01	02	03	04	05	06	07	08
Jackson	2.8	5.2	5.6	6.9	6.1	5.4	6.3	6.8	9.4

**Comparing the Trend of Local MSAs' October Unemployment Rates Since 2000**

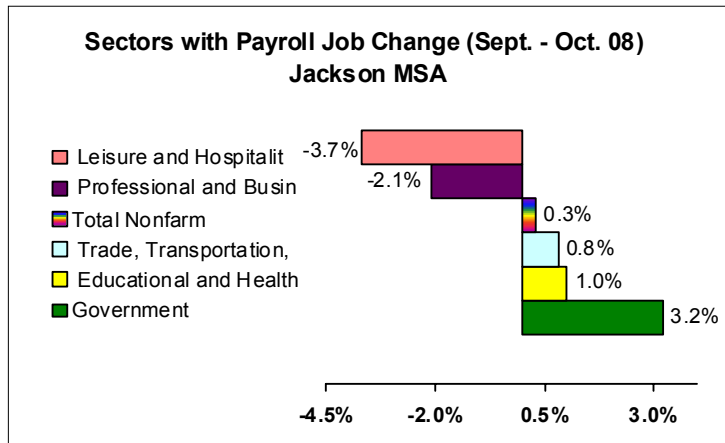




310 W. Bacon Street, Hillsdale, MI 49242  
517-437-0990 [www.scmw.org](http://www.scmw.org)



Payroll jobs in the Jackson MSA (Jackson County) were estimated at 57,400 in October (up 200 from September). Jackson gained 500 jobs combined in private and public education, and trade, transportation, & utilities, but lost 300 positions combined in professional and business services and leisure and hospitality.



Compared to October 2007, payroll job levels in most industries either declined or remained unchanged. Only educational and health services edged up by 100 jobs. Manufacturing lost 300 jobs. Employment in the construction sector was down by 200 over the year. Overall payroll employment in Jackson was 900 below last year's level in October.

Jackson MSA							
	October 2008	September 2008	October 2007	Monthly Change	Monthly % Change	Annual Change	Annual % Change
<b>Total Nonfarm</b>	<b>57,400</b>	<b>57,200</b>	<b>58,300</b>	<b>200</b>	<b>0.3%</b>	<b>-900</b>	<b>-1.5%</b>
Nat. Res. & Construction	1,800	1,800	2,000	0	0.0%	-200	-10.0%
Manufacturing	8,900	8,900	9,200	0	0.0%	-300	-3.3%
Trade, Transportation, Utilities	12,200	12,100	12,400	100	0.8%	-200	-1.6%
Information	500	500	500	0	0.0%	0	0.0%
Financial Activities	1,900	1,900	1,900	0	0.0%	0	0.0%
Professional and Business	4,600	4,700	4,600	-100	-2.1%	0	0.0%
Educational and Health	9,700	9,600	9,600	100	1.0%	100	1.0%
Leisure and Hospitality	5,200	5,400	5,400	-200	-3.7%	-200	-3.7%
Other Services	2,800	2,800	2,800	0	0.0%	0	0.0%
Government	9,800	9,500	9,900	300	3.2%	-100	-1.0%

**Southwest Michigan Works! Agency Local Area Employment Data - 2008**

	January	February	March	April	May	June	July	August	September	October	November	December	Ann Avg
<b>South Central Michigan</b>													
Labor force	148,375	148,650	149,025	147,800	149,525	149,925	149,325	146,425	145,075	146,375			148,050
Employment	135,525	135,675	136,225	137,075	136,125	136,275	133,425	132,075	130,875	131,900			134,525
Unemployed	12,850	12,975	12,800	10,725	13,400	13,650	15,900	14,350	14,200	14,450			13,525
Rate	8.7	8.7	8.6	7.3	9.0	9.1	10.7	9.8	9.8	9.9			9.1
<b>Hillsdale</b>													
Labor force	22,000	21,850	21,950	21,775	22,175	22,150	22,175	21,650	21,400	21,700			21,875
Employment	19,875	19,800	19,950	20,050	20,025	19,975	19,350	19,325	19,125	19,350			19,675
Unemployed	2,125	2,050	2,000	1,700	2,150	2,175	2,825	2,300	2,275	2,350			2,200
Rate	9.6	9.4	9.1	7.9	9.7	9.8	12.7	10.6	10.6	10.8			10.0
<b>Jackson</b>													
Labor force	76,100	76,500	76,800	75,800	76,900	77,000	76,800	75,300	74,500	75,200			76,100
Employment	70,000	70,200	70,800	70,900	70,500	70,300	69,400	68,400	67,600	68,100			69,600
Unemployed	6,100	6,300	6,100	5,000	6,400	6,700	7,400	6,900	6,900	7,100			6,500
Rate	8.0	8.3	7.9	6.5	8.3	8.6	9.7	9.2	9.3	9.4			8.5
<b>Lenawee</b>													
Labor force	50,250	50,325	50,450	50,200	50,475	50,800	50,350	49,475	49,200	49,500			50,100
Employment	45,600	45,725	45,700	46,150	45,575	45,975	44,675	44,350	44,175	44,425			45,225
Unemployed	4,650	4,600	4,750	4,050	4,900	4,825	5,675	5,125	5,000	5,050			4,875
Rate	9.2	9.2	9.4	8.1	9.7	9.5	11.3	10.4	10.2	10.2			9.7