

MICHIGAN DEPT. OF ENERGY, LABOR & ECON. GROWTH/LABOR MARKET ANALYSIS - SOUTH CENTRAL MICHIGAN
CIVILIAN LABOR FORCE ESTIMATES
By Place of Residence/Seasonally Unadjusted. February, 2010 **

Areas	CIVILIAN LABOR FORCE					EMPLOYMENT					UNEMPLOYMENT RATES		
	Feb. 2010	Jan. 2010	Feb. 2009	Monthly Change	Annual Change	Feb. 2010	Jan. 2010	Feb. 2009	Monthly Change	Annual Change	Feb 10	Jan 10	Feb 09
Jackson MSA	75,200	75,100	77,500	100	-2,300	64,100	63,700	67,800	400	-3,700	14.8	15.2	12.5
Hillsdale Co.	19,800	19,850	21,100	-50	-1,300	16,250	16,225	17,450	25	-1,200	17.9	18.3	17.3
Lenawee Co.	47,075	47,075	48,900	0	-1,825	39,125	39,025	41,550	100	-2,425	16.9	17.1	15.0
Michigan	4,814,000	4,807,000	4,895,000	7,000	-81,000	4,112,000	4,091,000	4,265,000	21,000	-153,000	14.6	14.9	12.9
U.S.A.*	153,194	152,957	153,804	237	-610	137,203	136,809	140,105	394	-2,902	10.4	10.6	8.9

* Expressed in thousands; ** All labor force and employment numbers are rounded to the nearest 25 for counties, 100 for MSAs, and 1,000 for the State and the U.S.

February Jobless Rates Decline Slightly in Most Regional Counties

In February, private and public education returned to full staffing levels after the holiday break, and jobless rates edged downward in most area counties. Unemployment rates decreased in February by an average of four-tenths of a percentage point. Nonfarm payroll jobs inched up by 0.2 to 0.7 percent in regional metro areas.

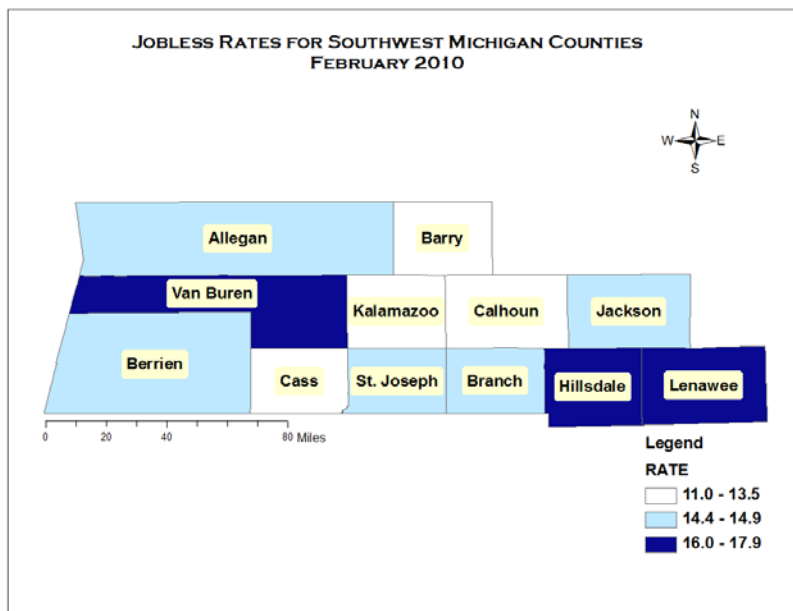
Labor Force Changes Mixed Over the Month but Down Over the Year

Labor force declined over the month in seven regional counties, ranging from -50 in Hillsdale to -300 in Berrien County. Labor force was unchanged over the month in Lenawee County while increasing in Branch, Cass, Jackson, and Calhoun counties. Over the year, the fall in labor force ranged from -450 in Cass to -2,925 in Kalamazoo County. St. Joseph County recorded the highest rate of labor force loss (-7.6%), followed by Hillsdale (-6.9%) and Lenawee (-5.8%) counties.

Employment Rose Over the Month but Was Substantially Down Over the Year in All Counties

February employment by place of residence increased in almost all regional counties by an average of three tenths of a percentage point. Job gains ranged from +25 in Cass and Hillsdale counties to +500 in Calhoun County (Battle Creek MSA). Allegan and Barry counties lost jobs over the month. Construction and retail trade recorded a few seasonal job cuts, and manufacturing jobs edged down in some areas. However, these job cuts were more than offset by the gain of employment in the education sector.

Over the year, employment plummeted in all area counties, ranging from -925 in Branch to -5,350 in Kalamazoo County. The average rate of employment decline over the year in February was approximately 4.4 percent.



Jobless Rates Edged Down in February but Rose Substantially Over the Year

February unemployment rates declined modestly in almost all area counties, with the exception of Cass County, where the jobless rate remained unchanged at 13.5 percent. The jobless rate reductions ranged from -0.2 percentage points in Lenawee to -0.9 percentage points in St. Joseph County. Five regional counties recorded lower rates than the statewide rate of 14.6 percent in February (Kalamazoo, Barry, Calhoun, Cass, and St. Joseph). Jobless rates in Berrien and Branch counties matched the statewide rate. The remaining five regional counties (Jackson, Allegan, Van Buren, Lenawee, and Hillsdale) registered higher jobless rates than the state.

Compared to February 2009, jobless rates

advanced by an average of 1.7 percentage points. Van Buren County recorded the highest jobless rate increase over the year (+2.9 percentage points), followed by Berrien, Cass, and Jackson counties (+2.3).

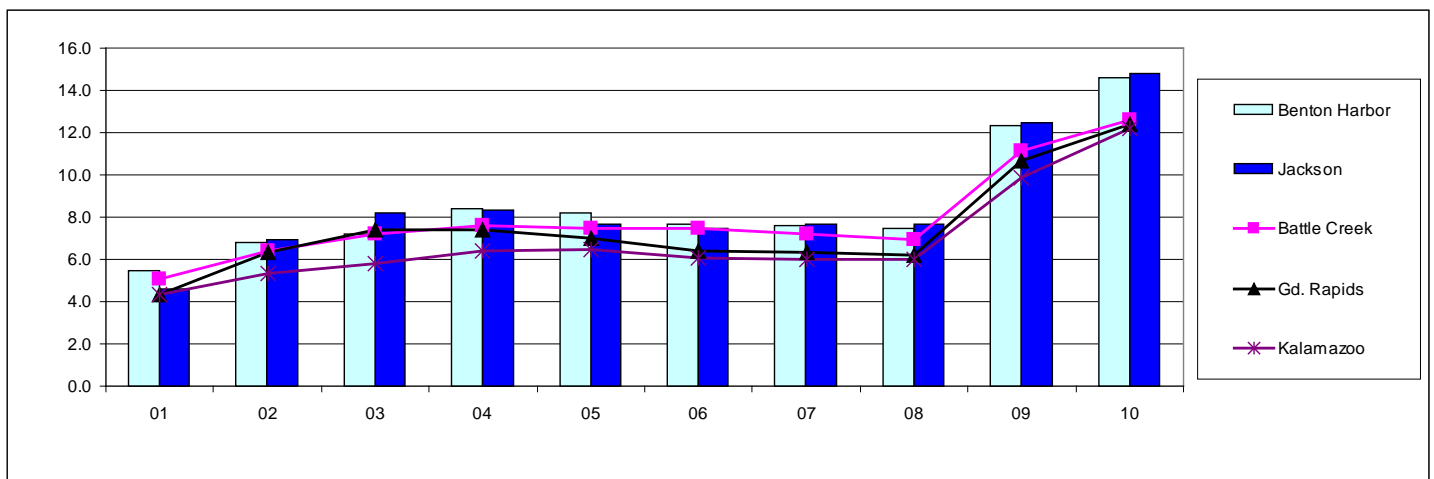
Local Metro Area February Unemployment Rates Since 2001

Since 2001, jobless rates have shot up in the Jackson (+10.2 percentage points), Niles-Benton Harbor (+9.1), Grand Rapids (+8.1), Kalamazoo (+7.9), and Battle Creek (+7.5) metro areas.

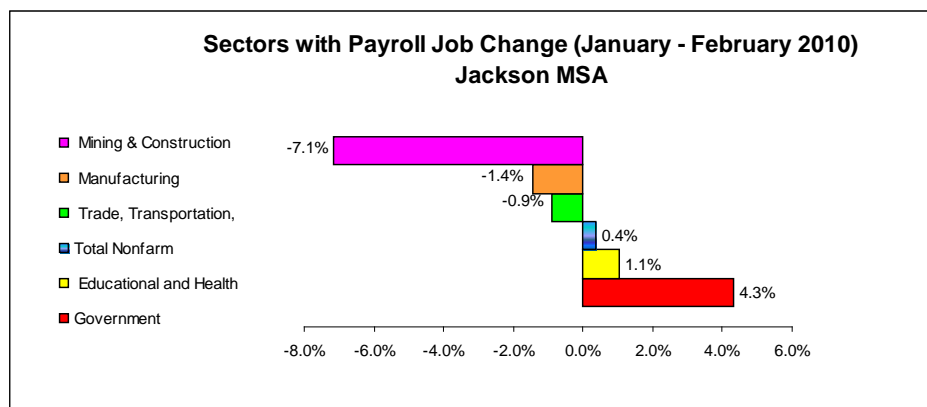
Year \ Areas	01	02	03	04	05	06	07	08	09	10
Jackson	4.6	6.9	8.2	8.3	7.7	7.5	7.7	7.7	12.5	14.8

February unemployment rates increased from 2001 to 2004, during the first wave of manufacturing job losses triggered by the 2001 national recession. Jobless rates stabilized from 2005-08, and then jumped sharply in 2009, due primarily to significant layoffs in the auto industry. Unemployment rates in February 2010 continued to be as high as record rates set in the early 1980s.

Comparing the Trend of Local MSAs' February Unemployment Rates Since 2001



Payroll jobs in the **Jackson MSA** (Jackson County) were estimated at 52,400 in February (up 200 from January). The area gained 500 jobs seasonally in private and public education but lost 100 jobs each in construction, manufacturing, and retail trade. Employment in professional and business services, financial activities, and leisure and hospitality remained unchanged over the month.



Compared to February 2009, payroll job levels in most industries fell, with the exception of other services (personal care, car repair, laundry, etc.) where employment remained unchanged. Job cuts were greatest in manufacturing, with employment plummeting by 1,500 over the year. Professional and business services lost 400 jobs, while educational and health services cut 300 jobs. Leisure and hospitality, construction, and retail trade each recorded a reduction of 200 jobs over the year. Overall payroll employment in Jackson was 2,800 (or -5.1 percent) below the February 2009 level.

