



310 W. Bacon Street, Hillsdale, MI 49242
517-437-0990 www.scmw.org



MICHIGAN DEPT. OF ENERGY, LABOR & ECON. GROWTH/LABOR MARKET ANALYSIS - SOUTH CENTRAL MICHIGAN
CIVILIAN LABOR FORCE ESTIMATES
By Place of Residence/Seasonally Unadjusted. February, 2009 **

Areas	CIVILIAN LABOR FORCE					EMPLOYMENT					UNEMPLOYMENT RATES		
	Feb. 2009	Jan. 2009	Feb. 2008	Monthly Change	Annual Change	Feb. 2009	Jan. 2009	Jan. 2008	Monthly Change	Annual Change	Feb 09	Jan 09	Jan 08
Jackson MSA	74,400	74,400	76,500	0	-2,100	64,900	65,400	70,300	-500	-5,400	12.7	12.1	8.0
Hillsdale Co.	21,125	21,275	21,075	-150	50	17,525	17,600	19,100	-75	-1,575	17.0	17.3	9.5
Lenawee Co.	48,100	48,275	49,050	-175	-950	40,875	40,975	44,550	-100	-3,675	15.0	15.1	9.1
Michigan	4,818,000	4,816,000	4,925,000	2,000	-107,000	4,203,000	4,215,000	4,551,000	-12,000	-348,000	12.8	12.5	7.6
U.S.A.*	153,804	153,445	152,503	359	1,301	140,105	140,436	144,550	-331	-4,445	8.9	8.5	5.2

* Expressed in thousands; ** All labor force and employment numbers are rounded to the nearest 25 for counties, 100 for MSAs, and 1,000 for the State and the U.S.

February Jobless Rates Stable in Regional Counties

Regional unemployment rates in February recorded only modest changes. The four Southwest Michigan metro areas registered only slight upward movements in February jobless rates. Rates inched up in seven counties (Allegan, Branch, Jackson, Kalamazoo, Berrien, Barry, Calhoun), while slightly declining in the remaining counties. The highest unemployment rate increases were recorded in Allegan and Branch counties at eight tenths of a percentage point.

Labor Force Mostly Down Over the Month and Over the Year

Labor force was down over the month in ten of the twelve regional counties, ranging from -100 in Allegan and Barry counties to -425 in Van Buren County. Labor force increased over the month in Branch County (+150), and remained unchanged in Jackson County.

Over the year, labor force fell in almost all regional counties, with the exception of Branch (+175) and Hillsdale (+50). Labor force declines over the year ranged from -375 in St. Joseph to -4,550 in Kalamazoo County.

Employment by Place of Residence Relatively Stable Over the Month but Substantially Down Over the Year

From January to February, employment by place of residence edged down in all regional counties by an average of six tenths of a percentage point. Employment declines in February ranged from -50 in Branch to -925 in Kalamazoo County. There were no major recalls of workers who were laid off in January by auto suppliers.

Over the year, employment plunged in all regional counties, ranging from -1,275 in Branch to -8,675 in Kalamazoo County. The average rate of employment decline was estimated at 7.1 percentage points.

Jobless Rates Changes Mixed Over the Month but Substantially Higher than Last Year's Levels

Unemployment rates inched up over the month in seven regional counties at an average of five tenths of a percentage point. Jobless rates were down slightly in the remaining five counties at a rate of two tenths of a percentage point. Seven regional counties recorded lower rates than the statewide rate of 12.8 percent in February (Kalamazoo, Barry, Cass, Calhoun, Berrien, Allegan, and Jackson). The other remaining counties registered higher jobless rates than the state.

Over the year, unemployment rates were up substantially in all regional counties by an average of 4.7 percentage points. Hillsdale County recorded the highest jobless rate increase over the year (+7.5 percentage points), followed by Branch (+6.5) and St. Joseph County (+6.1).

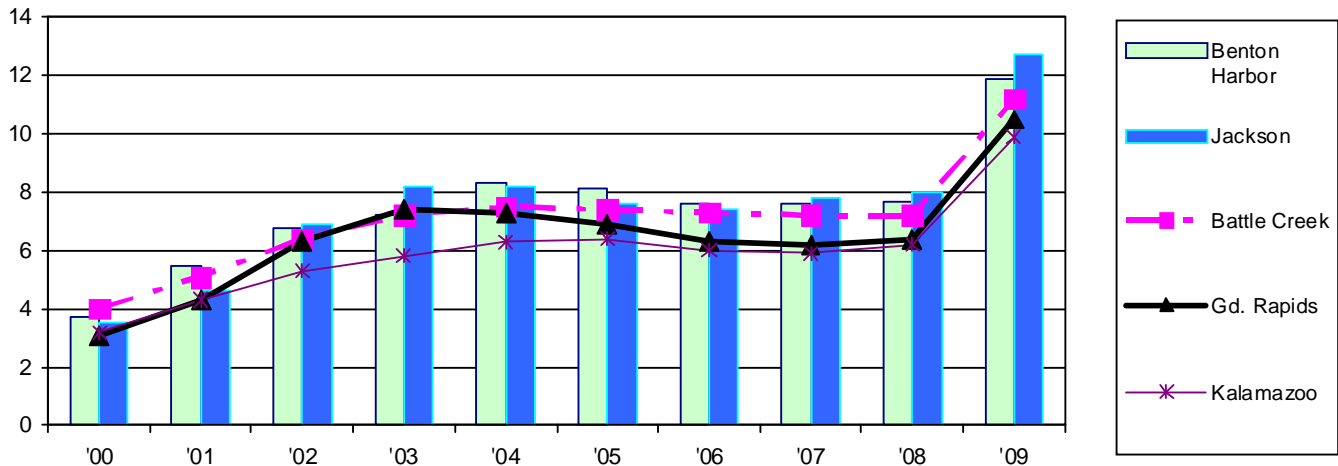
Local MSAs February Unemployment Rates Since 2000

From February 2000 to February 2009, jobless rates rose significantly in the Jackson (+9.2 percentage points), Niles-Benton Harbor (+8.2), Grand Rapids (+7.4), Battle Creek (+7.2), and Kalamazoo (+6.7) metro areas.

Areas \ Year	00	01	02	03	04	05	06	07	08	09
Jackson	3.5	4.6	6.9	8.2	8.2	7.6	7.4	7.8	8.0	12.7

February unemployment rates rose from 2000 to 2004, fell in 2005 and 2006; then, began to rise again in 2008 in most regional metropolitan areas. Metro area jobless rates jumped sharply in February 2009 to reach levels last seen in the early to mid-1980s for the month.

Comparing the Trend of Local MSAs' February Unemployment Rates Since 2000



Payroll jobs in the Jackson MSA (Jackson County) were estimated at 54,300 in February (up 100 from January). A total of 400 jobs were lost in construction, manufacturing, retail trade, and leisure and hospitality. However, Jackson gained a total of 500 jobs over the month in the private and public education sectors, and in other services (repair and maintenance, personal and laundry services, etc.).

Compared to February 2008, payroll job levels in most industries either declined or remained unchanged. Manufacturing employment plummeted by 1,000 over the year. Employment in the retail trade sector was down by 500, while professional and business services, and leisure and hospitality sectors lost 300 and 400 jobs, respectively, over the year. Overall payroll employment in Jackson was 2,800 below last year's February level.

