



310 W. Bacon Street, Hillsdale, MI 49242
517-437-0990 Fax 517-439-4388

MICHIGAN DEPT. OF LABOR & ECON. GROWTH/LABOR MARKET ANALYSIS - SOUTH CENTRAL MICHIGAN
CIVILIAN LABOR FORCE ESTIMATES
By Place of Residence/Seasonally Unadjusted. June, 2008 **

Areas	CIVILIAN LABOR FORCE					EMPLOYMENT					UNEMPLOYMENT RATES		
	June 2008	May 2008	June 2007	Monthly Change	Annual Change	June 2008	May 2008	June 2007	Monthly Change	Annual Change	June 08	May 08	June 07
Jackson MSA	77,000	76,900	78,500	100	-1,500	70,400	70,500	72,300	-100	-1,900	8.6	8.3	8.0
Hillsdale Co.	22,150	22,175	22,300	-25	-150	19,975	20,025	20,300	-50	-325	9.8	9.7	8.9
Lenawee Co.	50,800	50,475	51,125	325	-325	45,975	45,575	47,300	400	-1,325	9.5	9.7	7.5
Michigan	5,059,000	5,005,000	5,084,000	54,000	-25,000	4,620,000	4,589,000	4,712,000	31,000	-92,000	8.7	8.3	7.3
U.S.A.*	155,582	154,003	154,252	1,579	1,330	146,649	145,926	146,958	723	-309	5.7	5.2	4.7

* Expressed in thousands; ** All labor force and employment numbers are rounded to the nearest 25 for counties, 100 for MSAs, and 1,000 for the State and the U.S.

Continued Flow of Summer Jobseekers Kept Regional Counties' Jobless Rates High in June

In June, high school youth joined college students looking for summer jobs, which kept jobless rates substantially high in all twelve regional counties. Hiring in warm-weather activities of leisure and hospitality, construction, and business services continued but at a slower pace than the growth in the number of jobseekers.

Labor Force Up Over the Month but Down Over the Year

Labor force rose over the month in almost all regional counties as high school youth entered the labor market looking for summer jobs. The only exception was Hillsdale County whose labor force remained virtually flat (inching down by 25). Labor force increases ranged from +50 in Barry to +1,200 in Berrien County. Over the year, labor force fell in almost all regional counties, with the exception of Berrien County (+2,200). Over-the-year labor force declines ranged from -50 in Allegan and St. Joseph counties to -1,900 in Calhoun County.

Employment Changes Mixed Over the Month but Mostly Down Over the Year

June coincides with the start of summer break for K-12 education (private and public), which means temporarily layoffs of support staff in that sector. At the same time, hiring in warm-weather activities continues. This June, eight of the twelve regional counties recorded employment gains at an average rate of seven tenths of a percentage point. Employment declined in the remaining four regional counties at an average rate of -0.3 percentage points.

Over the year, employment declined in almost all regional counties at an average rate of -2.1 percentage points. Only Berrien County recorded an employment gain of 1,100 over the year, due primarily to the opening of a tribal owned casino in August of last year in New Buffalo.

Jobless Rates Up Sharply Over the Month and Over the Year

June jobless rates remained virtually unchanged from the levels attained in May, inching up in almost all regional counties at an average of half a percentage point. The exception was Lenawee County whose unemployment rate inched down by 0.2 percentage points. Jobless rate increases ranged from one tenth of a percentage point in Hillsdale to eight tenths of a percentage point in Cass and St. Joseph counties.

Ten regional counties recorded lower rates than the statewide rate of 8.7 percent in June. The unemployment rates in Hillsdale and Lenawee counties were above the statewide average.

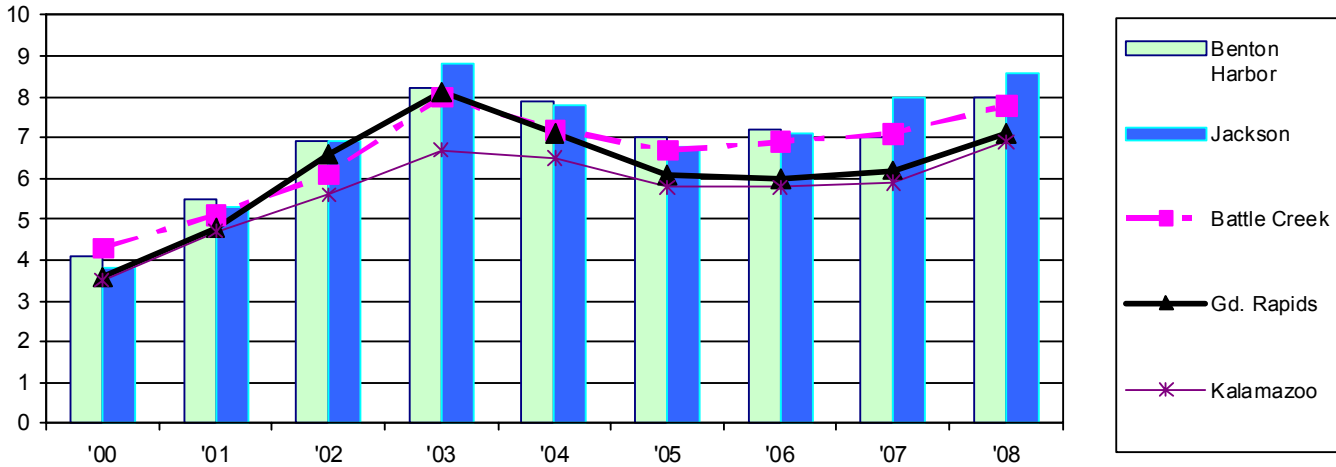
Over the year, unemployment rates rose in all regional counties at an average of 1.2 percentage points. Jobless rate increases ranged from six tenths of a percentage point in Jackson to 2.2 percentage points in St. Joseph County.

Local MSAs June Unemployment Rates Since 2000

Year \ Area	00	01	02	03	04	05	06	07	08
Jackson	3.8	5.3	6.9	8.8	7.8	6.8	7.1	8.0	8.6

From June 2000 to June 2008, jobless rates rose in the Jackson (+4.8 percentage points), Niles-Benton Harbor (+3.9), Grand Rapids (+3.5), Battle Creek (+3.5), and Kalamazoo (+3.4) metro areas.

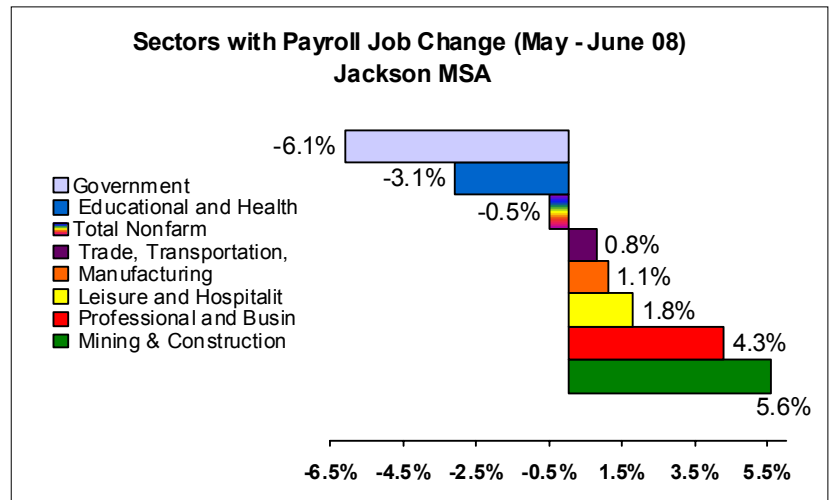
June unemployment rates have trended downward in recent years (2004, 2005, and 2006) for most regional metropolitan areas, before rising up again in 2007-2008.



Payroll jobs in the Jackson MSA (Jackson County) were down by 300 to 57,900 in June 2008. Seasonal job gains were recorded in business services (+200) and in construction, trade, and lodging and restaurants (+100 each). Manufacturing added 100 jobs over the month. However, these job gains were more than offset by an employment decline of 900 in private and public education.

Compared to June 2007, payroll job levels in most industries declined or remained unchanged. Employment in the professional and business services sector inched up by 100 over the year. Manufacturing jobs dropped by 200.

Overall payroll jobs in Jackson were 1,000 below June 2007 levels.





310 W. Bacon Street, Hillsdale, MI 49242
517-437-0990 Fax 517-439-4388

South Central Michigan MSA Payroll Employment - June 2008

<i>South Central Michigan MSA Payroll Employment - June 2008</i>							
Jackson MSA							
	June 2008	May 2008	June 2007	Monthly Change	Monthly % Change	Annual Change	Annual % Change
Total Nonfarm	57,900	58,200	58,900	-300	-0.5%	-1,000	-1.7%
Nat. Res. & Construction	1,900	1,800	2,100	100	5.6%	-200	-9.5%
Manufacturing	9,200	9,100	9,400	100	1.1%	-200	-2.1%
Trade, Transportation, Utilities	12,300	12,200	12,500	100	0.8%	-200	-1.6%
Information	500	500	500	0	0.0%	0	0.0%
Financial Activities	1,900	1,900	1,900	0	0.0%	0	0.0%
Professional and Business	4,800	4,600	4,700	200	4.3%	100	2.1%
Educational and Health	9,400	9,700	9,400	-300	-3.1%	0	0.0%
Leisure and Hospitality	5,800	5,700	6,100	100	1.8%	-300	-4.9%
Other Services	2,800	2,800	2,800	0	0.0%	0	0.0%
Government	9,300	9,900	9,500	-600	-6.1%	-200	-2.1%

South Central Michigan Works! Agency Local Area Employment Data - 2008

	January	February	March	April	May	June	July	August	September	October	November	December	Ann Avg
South Central Michigan													
Labor force	148,375	148,650	149,025	147,800	149,525	149,950							148,900
Employment	135,525	135,675	136,225	137,075	136,125	136,300							136,150
Unemployed	12,850	12,975	12,800	10,725	13,400	13,650							12,725
Rate	8.7	8.7	8.6	7.3	9.0	9.1							8.6
Hillsdale													
Labor force	22,000	21,850	21,950	21,775	22,175	22,150							21,975
Employment	19,875	19,800	19,950	20,050	20,025	19,975							19,950
Unemployed	2,125	2,050	2,000	1,700	2,150	2,175							2,025
Rate	9.6	9.4	9.1	7.9	9.7	9.8							9.2
Jackson													
Labor force	76,100	76,500	76,600	75,800	76,900	77,000							76,500
Employment	70,000	70,200	70,600	70,900	70,500	70,400							70,400
Unemployed	6,100	6,300	6,100	5,000	6,400	6,600							6,100
Rate	8.0	8.3	7.9	6.5	8.3	8.6							7.9
Lenawee													
Labor force	50,250	50,325	50,450	50,200	50,475	50,800							50,425
Employment	45,600	45,725	45,700	46,150	45,575	45,975							45,800
Unemployed	4,650	4,600	4,750	4,050	4,900	4,825							4,625
Rate	9.2	9.2	9.4	8.1	9.7	9.5							9.2



SOUTH CENTRAL MICHIGAN
WORKS!

310 W. Bacon Street, Hillsdale, MI 49242
517-437-0990 Fax 517-439-4388