

MICHIGAN DEPT. OF ENERGY, LABOR & ECON. GROWTH/LABOR MARKET ANALYSIS - SOUTH CENTRAL MICHIGAN
CIVILIAN LABOR FORCE ESTIMATES
By Place of Residence/Seasonally Unadjusted. January, 2010 **

Areas	CIVILIAN LABOR FORCE					EMPLOYMENT					UNEMPLOYMENT RATES		
	Jan. 2010	Dec. 2009	Jan. 2009	Monthly Change	Annual Change	Jan. 2010	Dec. 2009	Jan. 2009	Monthly Change	Annual Change	Jan 10	Dec 09	Jan 09
Jackson MSA	75,000	75,700	76,900	-700	-1,900	63,600	64,200	68,200	-600	-4,600	15.2	15.1	11.3
Hillsdale Co.	19,875	20,075	21,200	-200	-1,325	16,225	16,425	17,675	-200	-1,450	18.4	18.2	16.7
Lenawee Co.	47,100	47,400	48,925	-300	-1,825	39,050	39,525	41,850	-475	-2,800	17.1	16.6	14.4
Michigan	4,809,000	4,817,000	4,882,000	-8,000	-73,000	4,092,000	4,127,000	4,275,000	-35,000	-183,000	14.9	14.3	12.4
U.S.A.*	152,957	152,693	153,445	264	-488	136,809	137,953	140,436	-1,144	-3,627	10.6	9.7	8.5

* Expressed in thousands; ** All labor force and employment numbers are rounded to the nearest 25 for counties, 100 for MSAs, and 1,000 for the State and the U.S.

January Jobless Rates Up in All Regional Counties

Seasonal job cuts in construction, private and public education, retail trade, and leisure and hospitality, and moderate layoffs in manufacturing resulted in January 2010 jobless rate increases for all area counties. Unemployment rates rose in January by an average of five tenths of a percentage point. Nonfarm payroll jobs fell by 2.8 to 4.4 percent in regional metro areas.

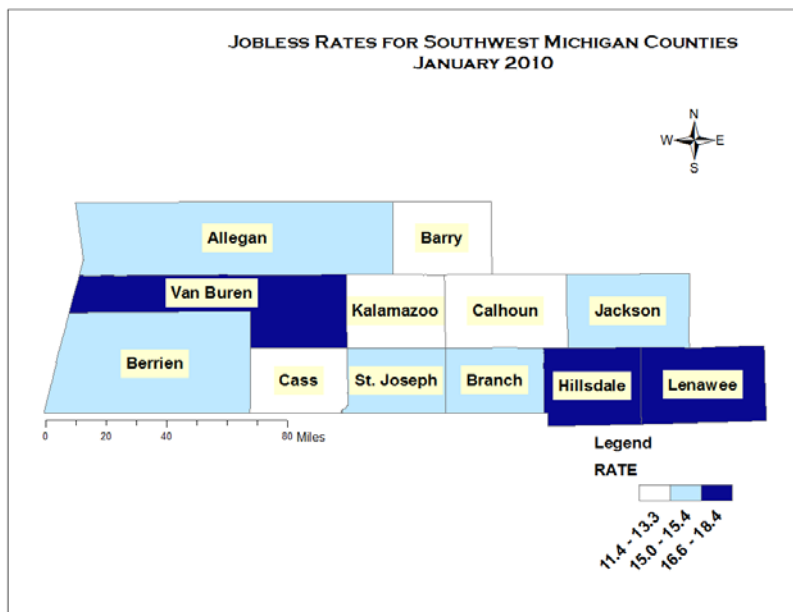
Labor Force Fell Over the Month and Over the Year

Labor force declined over the month in all regional counties, ranging from -100 in Branch to -1,300 in Calhoun County. Over the year, the fall in labor force ranged from -225 in Barry to -2,350 in Kalamazoo County. St. Joseph County recorded the highest rate of labor force loss (-7.4%), followed by Hillsdale (-6.3%) and Branch (-4.5%) counties.

Employment Declined Over the Month and was Substantially Down Over the Year in All Counties

January employment by place of residence fell in all regional counties by an average of 1.2 percentage points. Job cuts ranged from -175 in Branch to -1,400 in Calhoun County (Battle Creek MSA). Seasonal job cuts were recorded in construction, private and public education, retail trade, and leisure and hospitality. Manufacturing jobs also edged down in some areas.

Over the year, employment plunged in all area counties, ranging from -1,100 in Barry to -6,575 in Kalamazoo County. The average rate of employment decline over the year in January was approximately 5.7 percent.



Jobless Rates Edged Up in January and Rose Substantially Over the Year

January unemployment rates rose modestly in almost all area counties, with the exception of Kalamazoo County whose jobless rate remained unchanged at 11.4 percent. The increase in jobless rates ranged from +0.1 percentage points in Jackson to +1.4 percentage points in Van Buren County. Four regional counties recorded lower rates than the statewide rate of 14.9 percent in January (Kalamazoo, Barry, Calhoun, and Cass). The remaining eight regional counties (Branch, Jackson, Berrien, Allegan, St. Joseph, Van Buren, Lenawee, and Hillsdale) registered higher jobless rates than the state.

Compared to last year in January, jobless rates advanced by an average of 2.9 percentage points. Jackson County recorded the highest

jobless rate increase over the year (+3.9 percentage points), followed by Berrien and Van Buren counties (+3.8).

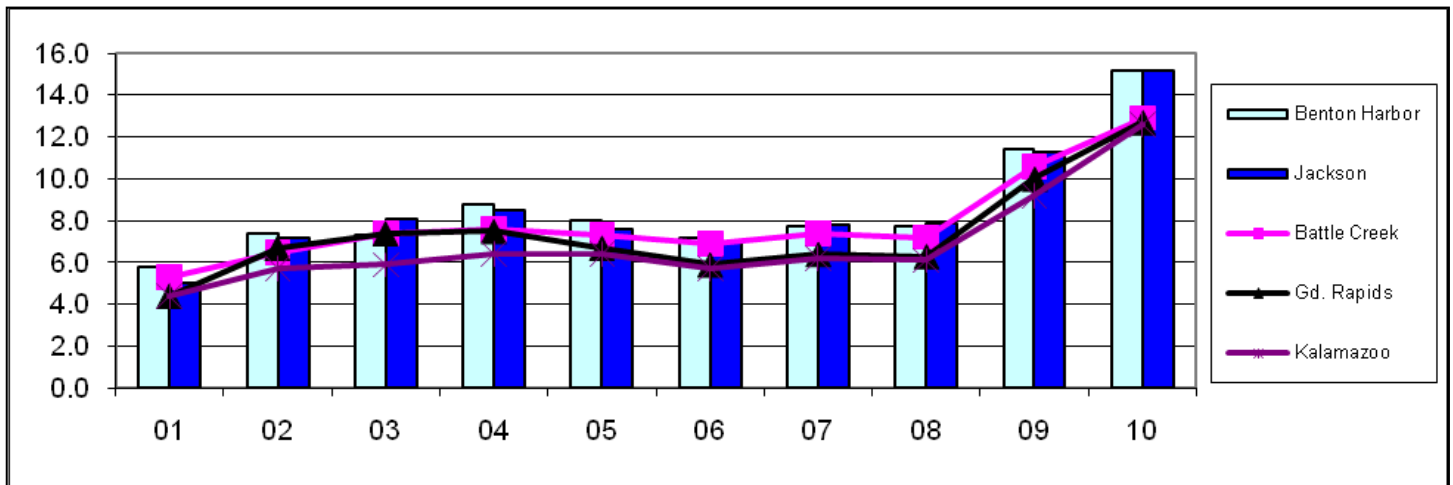
Local Metro Area January Unemployment Rates Since 2001

Since 2001, jobless rates have escalated in the Jackson (+10.0 percentage points), Niles-Benton Harbor (+9.4), Grand Rapids (+8.3), Kalamazoo (+8.2), and Battle Creek (+7.6) metro areas.

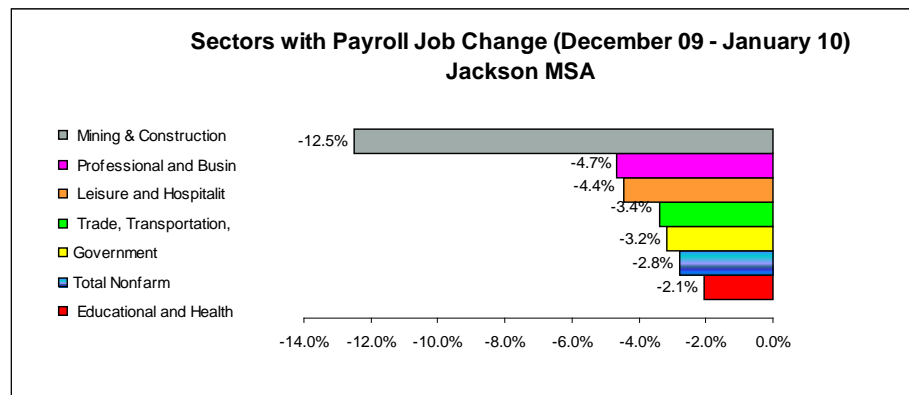
Year \ Areas	01	02	03	04	05	06	07	08	09	10
Jackson	5.0	7.2	8.1	8.5	7.6	7.0	7.8	7.9	11.3	15.2

January unemployment rates increased from 2001 to 2004, as manufacturing jobs were lost following the 2001 national recession. Jobless rates fell in 2005-06; rose again in 2007, and then jumped sharply in 2009, following massive layoffs in the auto industry early in the year. Unemployment rates continued to climb in January 2010 to levels last recorded in the early 1980s.

Comparing the Trend of Local MSAs' January Unemployment Rates Since 2001



Payroll jobs in the **Jackson MSA** (Jackson County) were estimated at 52,100 in January (down 1,500 from December). The area lost jobs seasonally in private and public education (-500) and retail trade (-300). The area also recorded a seasonal cut of 200 jobs each in construction, professional and business services, private educational and health services, and leisure and hospitality.



Compared to January 2009, payroll job levels in most industries either declined slightly or remained unchanged. Job loss was greatest in manufacturing, with employment plummeting by 1,600 over the year. Professional and business services lost 400 jobs, while educational and health services cut 300 jobs. Leisure and hospitality and retail trade each lost 200 jobs over the year. Overall payroll employment in Jackson was 3,000 (or -5.4 percent) below the January 2009 level.

