

South Central Michigan Works!

2005 Hillsdale Community Survey



Perspectives
Consulting Group

P.O. Box 496
Paw Paw, MI 49079
(269) 657-5400
Fax: (269) 657-0500
info@perspec.com

Index of Charts	3
Executive Summary	5
Introduction	9
Survey Methodology	
Survey Instrument	11
Survey Execution	11
Research Results	
Respondent Profile	13
Top Issues Facing Hillsdale County	18
Hillsdale County Services	23
Crime and Substance Abuse	27
Family Issues	30
Child Care	33
Housing	36
Health Care	39
Education	47
Employment	51
Personal Health	60
Culture and Recreation	62
Community Involvement	65
Conclusions	68
Appendices	
2005 Hillsdale Community Survey	75
Perspectives Consulting Group, Inc.	79





1)	Gender of Respondent.....	13
2)	Age of Respondent.....	13
3)	Household Income of Respondent	13
4)	Ethnic Background of Respondent	14
5)	Lived in the Area	14
6)	ZIP Code of Respondent.....	15
7)	School District of Respondent	16
8)	Marital Status of Respondents	16
9)	Have Children Under 18.....	17
10)	Education Level of Respondent	17
11)	Employment Status of Respondent	17
12)	Quality of Life in Hillsdale County.....	18
13)	Top Three Issues Facing Hillsdale County	19
14)	Most Important Issue to Their Family	21
15)	Average Ratings – Hillsdale County Services	23
16)	Rescue and Fire Services.....	23
17)	Police Services.....	24
18)	Snow Removal.....	25
19)	Public Transportation	25
20)	Condition of Road Surfaces.....	26
21)	Average Ratings – Crime and Substance Abuse	27
22)	Drug or Substance Abuse	27
23)	Crime	28
24)	Difficulty Accessing Substance Abuse Treatment Services	28
25)	Efforts to Provide Substance Abuse Care and Services	29
26)	Average Ratings – Family Issues.....	30
27)	Parents Not Staying Together	30
28)	Single Parent Households.....	31
29)	Unwed Pregnancies	32
30)	Use Child Care Regularly	33
31)	Average Ratings – Child Care	33
32)	Overall Quality of Child Care	33
33)	Availability of Open Care Child Slots.....	34
34)	Availability of Day Care	34
35)	Affordability of Day Care.....	35
36)	Home Owner	36
37)	Average Ratings – Housing	36
38)	Quality of Housing.....	37
39)	Availability of Affordable Housing	38
40)	Cost of Living in Hillsdale County	39
41)	Average Ratings – Health Care	39



**Table of Charts -
con't.**

42)	Availability of Health Care Services	40
43)	Quality of Health Care Services	40
44)	Availability of Affordable Health Insurance	41
45)	Cost of Health Care Services	42
46)	Have Health Coverage	42
47)	Difficulty Accessing Basic Health Care	43
48)	Difficulty Accessing Prescriptions	43
49)	Difficulty Accessing Dental Care	44
50)	Difficulty Accessing Mental Health Care	44
51)	Efforts to Provide Mental Health Care	45
52)	Turn to for Help	46
53)	Average Ratings – Education	47
54)	Number of K-12 Educational Options	47
55)	Local Public School District	48
56)	Availability of Higher Education	50
57)	County of Employment	57
58)	Changed Jobs or Employment in Past Three Years	52
59)	Employer Provides Job Related Training	53
60)	Employers Sensitive to Family Needs	54
61)	Average Ratings – Employment	56
62)	Availability of Job or Technical Training	56
63)	Availability of Living Wage Jobs	57
64)	Barriers to Employment	58
65)	Access Assistance in Finding Employment	59
66)	Own or Manage a Business	59
67)	Access Assistance in Finding Employees	59
68)	General Health of Respondent	60
69)	Exercise or Physical Activity	60
70)	Last Complete Physical	60
71)	Smoke Cigarettes	61
72)	Five or More Drinks in Past 30 Days	61
73)	Average Ratings – Culture and Recreation	62
74)	Quality of Libraries	62
75)	Quality of Parks	63
76)	Recreational Activities	64
77)	Cultural Activities	64
78)	Visit County and City Parks	65
79)	Member of a Religious Organization	65
80)	Volunteered in Past Year	66
81)	Where Respondents Have Volunteered	66



Four-hundred residents of Hillsdale County were randomly selected to participate in a survey in May of 2005. Each respondent was asked 76 questions about issues in Hillsdale County.

- Of the respondents, 50.0% were male and 50.0% were female and 32.2% were in the 45-64 age category, while 28.5% were in the 18-34 age category.
- The largest category of respondents (25.0%) indicated a household income of \$35,000 to \$49,999.
- Of the 400 survey respondents, 382 (95.5%) named White/Caucasian as their primary ethnic background.
- Fifty-two percent (52.0%) of respondents indicated that they have lived in Hillsdale County more than 21 years, and sixty-eight percent (68.3%) of respondents are married, followed by 14.5% of respondents who are single.
- The majority of respondents, 68.3%, have no children under the age of 18.
- Over thirty-eight percent (38.5%) indicated that they have graduated from high school and twenty-four percent (24.0%) of respondents have attended college but do not have a degree.
- Over forty-four percent (44.3%) of respondents indicated that they are currently employed full-time, while 8.0% of respondents are currently employed part-time.
- Over forty-three percent (43.5%) of respondents stated that the quality of life was "good," followed by 19.8% of respondents who said it was "fair."
- When asked to indicate the top three issues or concerns facing Hillsdale County, employment was the top issue named by 54.3% of respondents.
- When asked to indicate the top issue facing their family, over half of the respondents (55.0%) stated that they were unsure, while employment was the top issue named by 20.8% of respondents.



Executive Summary - con't.

- From highest to lowest service ratings in Hillsdale were: rescue and fire services, police services, snow removal, public transportation, and condition of road surfaces.
- Almost seventeen percent (16.5%) of respondents rated the issue of drug or substance abuse a "7," while 15.0% rated it an "8," on a scale of 1 to 10, where "10" is a serious problem.
- Crime received a "5" rating by 22.3% of respondents.
- Of the 400 respondents, 84.0% do not have difficulty accessing substance abuse treatment services.
- Almost fifty-four percent (53.8%) of respondents indicated that they feel sufficient efforts are being made in Hillsdale County to provide substance abuse treatment services.
- From highest to lowest rating family issue ratings were: single parent households, parents not staying together, and unwed pregnancies.
- Just over seven percent (7.3%) of respondents indicated that they use child care regularly, while 92.8% of respondents do not.
- From highest to lowest child care ratings were: overall quality of child care, availability of day care, availability of open child care slots, and affordability of day care.
- Over eighty percent (85.0%) of the respondents own a home.
- Twenty-one percent (21.5%) rated their satisfaction with the quality of housing in Hillsdale County a "7," followed by 20.3% of respondents who indicated a rating of "8."
- Almost half of the respondents (49.5%) rated their satisfaction with the availability of affordable housing as a "6," "7," or "8."
- Over fifty-four percent (54.5%) of respondents stated that the cost of living in Hillsdale County is average, while 21.5% of respondents felt it was slightly high.
- From highest to lowest health care ratings were: availability of health care services, quality of health care services, cost of health care services, and availability of affordable health insurance.



- Most respondents, 88.3%, have some type of health coverage, such as health insurance, prepaid plans, or government plans.
- Over ninety percent (93.8%) of respondents indicated that they do not have any difficulty accessing basic health care.
- Of the 400 respondents, 93.8% do not have difficulty accessing dental care.
- Over ninety percent (91.3%) indicated that they do not have difficulty accessing mental health care.
- Over half (54.8%) of respondents feel that sufficient efforts are being made to provide mental health care and services.
- Nearly half (47.5%) of respondents would first turn to a physician for help with a mental health concern.
- Over sixteen percent (16.5%) of respondents indicated a rating of "8," for the availability of K-12 educational options followed by 12.8% of respondents who indicated a rating of "7."
- Respondents were asked to rate their satisfaction with their local public school district. Over sixty percent (60.4%) of respondents indicated a rating of "7" or higher.
- Of the 400 respondents, 18.0% rated the availability of higher education in Hillsdale County an "8," followed by 14.8% of respondents who indicated a rating of "7."
- Just under eighty percent (79.4%) of respondents are employed in Hillsdale County. Almost ten percent (9.6%) of respondents work in Jackson County.
- Over eighty percent (82.7%) of respondents said that they had not changed jobs in the past three years.
- Over half (51.7%) of the respondents said that their employer does provide job related training.
- More than half of respondents (54.3%) felt that employers are sensitive to family needs.



Executive Summary - con't.

- Ratings for satisfaction with the availability of job or technical training resulted in 15.0% of respondents rating their satisfaction a "5," followed by 13.3% of respondents who indicated a "3."
- Over forty-one percent (41.3%) of respondents rated their satisfaction with the availability of living wage jobs a "1," "2," or "3," indicating a low rating of satisfaction.
- When asked to rate the largest barrier to employment in Hillsdale County, 62.8% of respondents cited a lack of jobs.
- Eighty-five percent (85.0%) of respondents answered that they do know how to access assistance in finding employment.
- Seventy-three percent (73.0%) of respondents indicated that they do not own or manage a business.
- Most respondents stated that their general health was good (44.5%) or very good (26.0%), when asked to rate their health.
- Seventy-six percent (76.0%) of respondents said they had participated in exercise or physical activity in the past month.
- Almost half of the respondents (45.0%) have had a complete physical within the past year.
- Eighty-four of the 400 respondents (21.0%) indicated that they smoke cigarettes everyday.
- Over three quarters (79.5%) of the respondents said they had not had five or more drinks at any one time in the last 30 days.
- From highest to lowest culture and recreation ratings were: quality of libraries, quality of parks, recreational activities, and cultural activities.
- Almost thirty percent (29.3%) of respondents indicated that they visit county and city parks 1 to 3 times a year, followed by 21.3% of respondents who visit local parks over 10 times a year.
- Almost half of the respondents (49.8%) stated that they are a member of a religious organization.
- Just under half of the respondents (48.3%) have volunteered their time within the past year.



As part of the 2005 Hillsdale Community Survey, South Central Michigan Works! has requested that Perspectives Consulting Group, Inc. complete a Community Survey with area residents. The 2005 Hillsdale Community Survey consisted of 400 telephone interviews with a random sample of Hillsdale County residents. A number of specialized topics were included on the 2005 Hillsdale Community Survey, including: education, social and quality of life issues, health and health care, economic issues, community involvement, and demographic information.

There are three main sections to the report; **Survey Methodology**, **Research Results**, and **Conclusions**. In the **Survey Methodology** section, the survey development and execution are explained in detail. The **Research Results** section contains the responses to all of the survey questions, generally grouped into categories for easy reference.





The 2005 Hillsdale Community Survey included 76 questions on a variety of topics, including education, social and quality of life issues, health and health care, economic issues, community involvement, and demographic information. The questions included various types of formats including yes/no, pre-defined choices and open-ended response. Development of the survey started with the ideas of the staff of South Central Michigan Works! Perspectives Consulting Group, Inc. developed the survey questions and ordered the survey based on generally accepted survey research principles. The survey instrument is included for reference in the **Appendices**.

Survey Instrument

A total of 400 completed surveys were obtained from Hillsdale County residents. The sampling method used for this survey was random-digit dialing of telephone numbers with area telephone prefixes. The following telephone prefixes were contacted using random-digit dialing: 283, 286, 287, 368, 437, 439, 523, 542, 549, 567, 688, 849 and 869.

Survey Execution

A list of random telephone numbers was prepared for each prefix and the numbers were dialed until 400 surveys were completed. A total of 5,996 calls were made to obtain the 400 completions from all prefixes. Since this was a random dialing of telephone numbers, many calls were made to disconnected numbers, businesses, people who did not live within Hillsdale County, and people unable to participate in the survey. Surveys were only completed with adults age 18 or over.

The survey interviewing took place in May 2005, between the hours of 6:00 p.m. and 9:00 p.m. on weekdays. A pretest of 40 surveys was completed, with no significant difficulties or problems noted. These pretest surveys are included in the final results.

Based on the number of households in Hillsdale County, and the number of survey completions, a confidence level and confidence interval can be calculated. In statistical terms, the confidence level is the likelihood that if the survey were replicated the results would be the same. The confidence level for this survey was 95 percent, meaning that 95 times out of 100, this survey would produce substantially the same results as achieved this time.

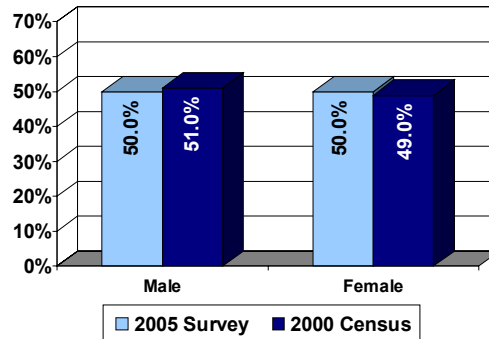


**Survey
Execution - con't.**

The confidence interval is the range that any answer could vary from the actual value. This is the “+/- xxx percent” margin of error value that pollsters reference. In this case, the 2005 Hillsdale Community Survey has a confidence interval of +/- 5 percent. Therefore, the answer to any question on the survey is within plus or minus 5 percent of the actual value. When comparing two responses to a question, any difference of less than 10 percent needs to be examined carefully, since statistically the difference could be considered negligible.



Of the 400 respondents, 50.0% were male and 50.0% were female.



Respondent Profile

Chart 1
Gender of Respondent

To ensure that all ages of Hillsdale County residents participated in the survey, minimum quota levels were set for each age group. All of the survey respondents were age 18 or over. Out of the 400 respondents, 32.2% were in the 45-64 age category, while 28.5% were in the 18-34 age category.

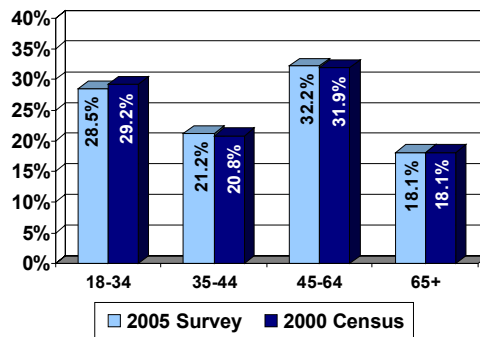


Chart 2
Age of Respondent

One of the survey questions asked respondents to indicate an appropriate household income range. Of the 400 respondents, 332 provided income information. The largest category of respondents (25.0%) indicated a household income of \$35,000 to \$49,999, followed by 22.6% of the respondents who have a household income between \$50,000 and \$74,999.

Income Category	2005 Survey	2000 Census
Less than \$15,000	11.4%	13.8%
\$15,000 - \$24,999	10.5%	12.7%
\$25,000 - \$34,999	17.2%	12.8%
\$35,000 - \$49,999	25.0%	18.2%
\$50,000 - \$74,999	22.6%	22.4%
\$75,000 - \$99,999	11.4%	11.3%
\$100,000 and over	1.8%	8.8%

Chart 3
Household Income of Respondent



Respondent Profile - con't.

Chart 4

Ethnic Background of Respondent

Ethnic Background	2005 Survey	2000 Census
Caucasian/White	95.5%	97.6%
African American/Black	1.3%	0.5%
Hispanic	0.8%	1.2%
Asian or Pacific Islander	0.3%	0.3%
American Indian/Native American	1.0%	0.3%
Other/Unsure	1.3%	0.1%

Of the 400 survey respondents, 382 (95.5%) named White/Caucasian as their primary ethnic background and 1.3% named African-American/Black as

their primary ethnic background. Three respondents (1.3%) did not indicate their primary ethnic background. Other responses included Arabic.

Chart 5

Lived in Area

Years	% Respondents
Less than 1 year	4.0%
1 to 3 years	5.8%
4 to 6 years	9.0%
7 to 10 years	7.0%
11 to 20 years	22.0%
21 or more years	52.0%
Unsure/NA	0.3%

Respondents were asked to indicate how long they have lived in Hillsdale County. The most frequent response was more than 21 years (52.0%), followed by 11 to 20 years (22.0%). One respondent (0.3%) was unsure.



In Hillsdale County, 130 respondents (32.5%) live in the 49242 ZIP code, followed by 13.3% who live in 49250. Almost seventeen percent (16.8%) of respondents provided ZIP codes that are not mentioned in the chart, and are listed below:

17 Respondents
49227

12 Respondents
49233

10 Respondents
49288

9 Respondents
49262

5 Respondents
49255

4 Respondents
49282

2 Respondents
49246
49258
49281

1 Respondent
49082
49237
49247
49836

ZIP Code	% Respondents
49242	32.5%
49250	13.3%
49274	8.0%
49232	6.5%
49249	6.0%
49252	6.0%
49266	4.8%
49271	4.5%
Other	16.8%
Unsure/NA	1.8%

Respondent Profile - con't.

Chart 6 ZIP Code of Respondent



Respondent Profile - con't.

Chart 7 School District of Respondent

School District	% Respondents
Hillsdale	32.0%
Jonesville	15.8%
Reading	9.0%
Addison	7.3%
North Adams	7.0%
Litchfield	6.8%
Pittsford	6.8%
Camden	6.5%
Waldron	3.5%
Other	4.0%
Unsure/NA	1.5%

Respondents were asked to name the school district they live in. A majority of the respondents (32.0%) stated that they live in the Hillsdale school district, followed by 15.8% who live in the Jonesville school district. Over four percent (4.5%) of respondents stated that they live in one of the following school district, which are not mentioned in the chart:

7 Respondents

*Hanover-Horton
Quincy*

1 Respondent

*Columbia
Hudson*

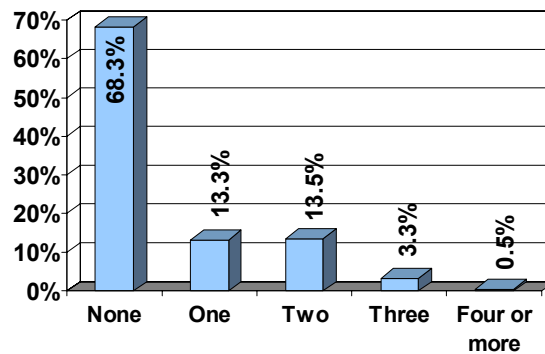
Chart 8 Marital Status of Respondent

Marital Status	2005 Survey	2000 Census
Married	68.3%	58.6%
Single	14.5%	21.9%
Widowed	8.0%	7.1%
Divorced	8.0%	10.8%
Separated	1.0%	1.6%

Sixty-eight percent (68.3%) of respondents are married, followed by 14.5% of respondents who are single. Eight percent (8.0%) of respondents are divorced and 8.0% of respondents are widowed.



Respondents were asked to indicate how many children they have under the age of 18. The majority of respondents, 68.3%, have no children under the age of 18. Over thirteen percent (13.5%) of respondents have two children under 18, followed by 13.3% of respondents who have one child under 18.



Respondent Profile - con't.

Chart 9
Have Children Under 18

One of the survey questions asked respondents to indicate the highest level of education they have completed. Over thirty-eight percent (38.5%) indicated that they have graduated from high school and twenty-four percent (24.0%) of respondents have attended college but do not have a degree. Over fifteen percent (15.3%) of respondents have earned a Bachelor's degree.

Level of education	2005 Survey	2000 Census
8th grade	1.3%	3.5%
Some high school	4.8%	12.3%
High school graduate	38.5%	32.9%
Some college, no degree	24.0%	27.1%
Associate's degree	8.5%	8.0%
Bachelor's degree	15.3%	11.2%
Graduate or professional degree	4.5%	5.1%
Post graduate study, but no degree	2.3%	N/A

Chart 10
Education Level of Respondent

When asked about current employment status, 44.3% of respondents indicated that they are currently employed full-time, while 8.0% of respondents are currently employed part-time. Twenty-five percent (25.5%) of respondents are currently retired.

Employment Status	% Respondents
Currently employed full-time	44.3%
Retired	25.5%
Unemployed, not seeking work	11.8%
Currently employed part-time	8.0%
Unemployed, seeking work	5.8%
Student	2.3%
Homemaker	2.0%

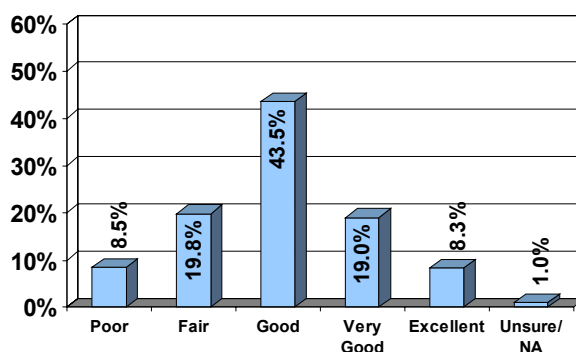
Chart 11
Employment Status of Respondent



Top Issues Facing Hillsdale County

Chart 12

Quality of Life in Hillsdale County



The first question asked respondents to rate the quality of life in Hillsdale County. Over forty-three percent (43.5%) of respondents stated that the quality of life was “good,” followed by 19.8% of respondents who said it was “fair” and 19.0% of respondents who stated it was “very good.”

An average rating was calculated for the responses to this question. Each of the responses was assigned a number; 1 being “Poor” and 5 being “Excellent.” Therefore, an average of “3” would indicate that the average response was between “Poor” and “Excellent.” The average rating for “How would you rate the quality of life in Hillsdale County” was 2.99.

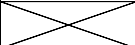
There were no demographic categories with significantly higher averages.

Demographic categories with significantly lower averages include: those who refused to state the ZIP code where they lived (2.43), those who are divorced (2.52), those who are not homeowners (2.58), and those whose household income is less than \$15,000 (2.53).

There was no strong correlation between responses to this statement and other statements.



Top Issues Facing Hillsdale County - con't.

Issue	% Total	% First	% Second	% Third
Employment	54.3%	48.5%	4.8%	1.0%
Schools/education	16.5%	3.0%	8.3%	5.3%
Roads	12.8%	5.8%	4.5%	2.5%
Health care	6.8%	1.0%	5.3%	0.5%
Substance abuse	4.8%	1.0%	2.8%	1.0%
Transportation	4.3%	1.3%	1.8%	1.3%
Housing	4.0%	1.8%	0.5%	1.8%
Other	39.8%	12.1%	17.9%	9.8%
Unsure/NA		25.5%	54.8%	77.0%

* Responses total more than 100% because respondents were able to list more than one issue.

Chart 13

Top Three Issues Facing Hillsdale County

Respondents were then asked to state the top three issues or concerns facing Hillsdale County residents. Employment was the top issue named by 54.3% of respondents, while 16.5% of respondents stated schools/education and 12.8% of respondents stated roads. Thirty percent (39.8%) of respondents gave a response which is not mentioned in the chart. Those responses are stated in the text below:

Other responses given include:

Business/Development

City infrastructure (1 respondent)
 Good value for land (1 respondent)
 Land use (1 respondent)
 Maintaining downtown (1 respondent)
 Poor planning for growth and development (1 respondent)
 Too rural (1 respondent)

Culture and Recreation

Recreational activities (5 respondents)
 Shopping (5 respondent)
 Activities for children (2 respondents)
 Children's activities (1 respondent)
 Cultural exposure for kids (1 respondent)
 Entertainment (1 respondent)
 Extra curricular activities (1 respondent)

Safety

Crime (5 respondents)
 Violence/rape (2 respondents)
 Child abuse/neglect (1 respondent)
 Vigilantism (1 respondent)



Top Issues Facing Hillsdale County - con't.

Health

Health Insurance (3 respondents)

Hunger (2 respondents)

Jobs/Economy

Gas prices (6 respondents)

Economic growth (5 respondents)

Finances (5 respondents)

Wages (5 respondents)

Grocery prices (1 respondent)

Inflation (1 respondent)

Government

Taxes (28 respondents)

City government (5 respondents)

County doesn't follow through and you get the run around (1 respondent)

Governmental finances (1 respondent)

Inability to customize government (1 respondent)

Management of Commission (1 respondent)

Political

Illegal immigration (1 respondent)

Politics (1 respondent)

Republicans (1 respondent)

Services

Child care (4 respondents)

Police (3 respondents)

Cable services (1 respondent)

Fire department (1 respondent)

Need a larger jail (1 respondent)

Phone line and cable services lacking (1 respondent)

Permits for driveways (1 respondent)

Rescue services (1 respondent)

Sewers (1 respondent)

Snow removal (1 respondent)

Social services (1 respondent)

Social Issues

Poverty (11 respondents)

Youth concerns (7 respondents)

Senior citizens concerns (3 respondents)

Diversity (2 respondents)

Greed (1 respondent)

Lack of religion in the community (1 respondent)

Political and cultural diversity (1 respondent)

Morale (1 respondent)

No access for the handicap (1 respondent)

Substance abuse (1 respondent)

Quality of Life

Attitude of people (2 respondents)

Environment (2 respondents)

Gaining opinions and hearing the people (1 respondent)

Not progressing as a county (1 respondent)

Not welcoming (1 respondent)

Opportunity to advance (1 respondent)

Pollution (1 respondent)



Miscellaneous

- Legal system (2 respondents)*
- Groceries (1 respondent)*
- Lack of knowledge (1 respondent)*
- Lack of war time industries (1 respondent)*
- Money goes to Jackson and can't use facilities (1 respondent)*

Top Issues Facing Hillsdale County - con't.

After naming the top three issues facing Hillsdale County residents, respondents were asked to state the most significant issue facing their own family. Over half of the respondents (55.0%) stated that they were unsure as to the top issue facing their family. Employment was the top issue named by 20.8% of respondents, while no other issue was rated by more than 4.0% of the respondents. Seven percent (7.3%) of respondents provided other responses which are listed below.

Issue	% Respondents
Employment	20.8%
Taxes	4.0%
Finances	2.8%
Health care	2.5%
Schools/education	2.5%
Senior citizens concerns	1.5%
Poverty	1.3%
Housing	0.8%
Substance Abuse	0.8%
Transportation	0.5%
Youth concerns	0.5%
Other	7.3%
Unsure/NA	55.0%

Chart 14

Most Important Issue to Their Family

3 Respondents

Family togetherness

2 Respondents

- Gas prices*
- Health Insurance*
- Money for college*
- Wages*

1 Respondent

- Child care*
- Death in the family*
- Deciding whether to relocate*
- Distance*
- Economy*
- Family value*
- Greed*
- Need a YMCA*
- Positions at work*
- Recreational activities*
- Rescue services*
- Rising costs of goods*



**Top Issues
Facing Hillsdale
County - con't.**

*Roads
Social security
State pension, social security, property taxes
Traffic with lights
Water
Where we will be in 10 years*



The survey respondents were then asked to rate their satisfaction with different services in Hillsdale County. Respondents rated the services on a scale from 1 to 10, with 1 being “not satisfied at all” and 10 being “very satisfied.”

An average rating was calculated for each of the responses. Therefore, an average of 5.5 would indicate that the average response was between “not satisfied at all” and “very satisfied.”

Issue	2005 Average
Rescue and fire services	8.12
Police services	7.65
Snow removal	6.34
Public Transportation	4.33
Condition of road surfaces	3.91

Chart 15

Average Ratings - Hillsdale County Services

Rescue and fire services in Hillsdale County (376 respondents – 8.12 average)

Two hundred and seventy-three respondents (68.3%) rated their satisfaction with the rescue and fire services as an “8,” “9,” or “10.” Over twenty-four percent (24.5%) of respondents indicated a “10” rating, meaning that they are very satisfied with the rescue and fire services in Hillsdale County.

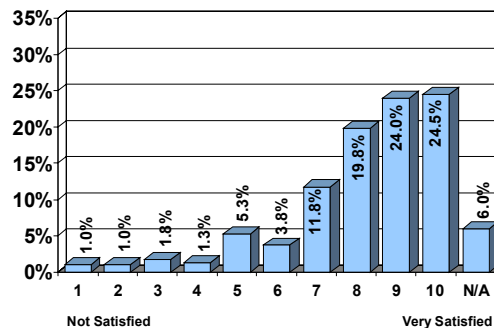


Chart 16

Rescue and Fire Services

Demographic categories with significantly higher averages include: widowed (8.84), and ages 65+ (8.60).

The only demographic category with a significantly lower average is: ages 18-43 (7.64).

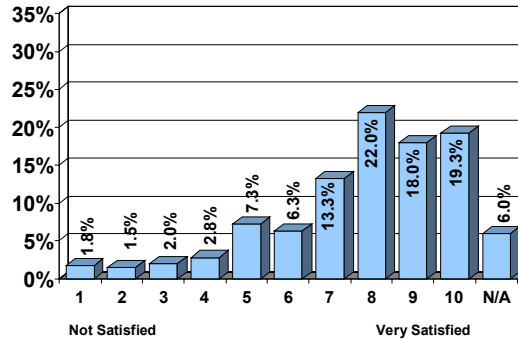


Hillsdale County Services - con't.

There was a strong correlation between responses to the statement “Rate your satisfaction with rescue and fire services in Hillsdale County” and the statement “Rate your satisfaction with police services in Hillsdale County.” The higher they rated satisfaction with rescue and fire services in Hillsdale County, the higher they were likely to rate satisfaction with police services in Hillsdale County.

Police services in Hillsdale County (376 respondents – 7.65 average)

Chart 17
Police Services



When asked to rate the police services on a scale of 1 to 10, 22.0% of respondents gave a rating of “8,” while 18.0% of respondents rated the police services a “9.” Seventy-seven respondents (19.3%) indicated that they were “very satisfied” (a rating of “10”) with the police services in Hillsdale County.

Demographic categories with significantly higher averages include: widowed (8.65), ages 65+ (8.14), high school graduate (8.16), and those who did not indicate an income level (8.21).

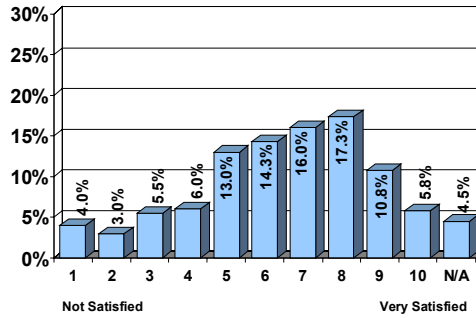
Demographic categories with significantly lower averages include: divorced (6.63), non-homeowners (7.02), and those with an Associate's degree (6.85).

There was a strong correlation between responses to the statement “Rate your satisfaction with police services in Hillsdale County” and the statement “Rate your satisfaction with rescue and fire services in Hillsdale County.” The higher they rated satisfaction with police services in Hillsdale County, the higher they were likely to rate satisfaction with rescue and fire services in Hillsdale County.



Snow removal in Hillsdale County (382 respondents – 6.34 average)

The 400 respondents were asked to rate their satisfaction with the snow removal in Hillsdale County. Seventeen percent (17.3%) of respondents indicated a rating of “8,” followed by 16.0% of respondents who indicated a rating of “7.” Sixty-six respondents (16.6%) gave a rating of “9” or above.



Hillsdale County Services - con't.

Chart 18
Snow Removal

The only demographic category with a significantly higher average is: widowed (7.66).

There are no demographic categories with significantly lower averages.

There was no strong correlation between responses to this statement and other statements.

Public transportation in Hillsdale County (248 respondents – 4.33 average)

Over twenty-five percent (25.6%) gave public transportation a satisfaction rating of “3”, “2,” or “1.” Forty-one respondents (10.3%) rated their satisfaction with the public transportation in Hillsdale County as “not satisfied at all.” Thirty-eight percent (38.0%) of respondents were unsure or provided no answer.

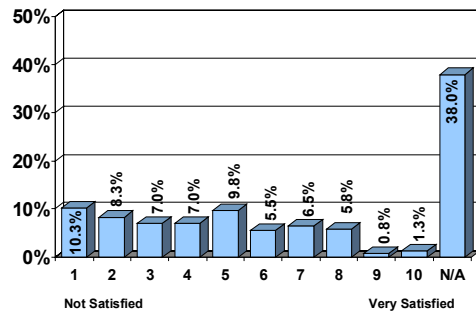


Chart 19
Public Transportation

There are no demographic categories with significantly higher averages.

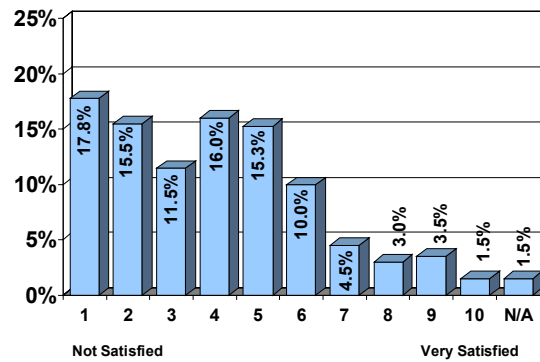
Demographic categories with significantly lower averages include: ZIP codes 49274 (3.15) and 49249 (1.71).

There was no strong correlation between responses to this statement and other statements.



Chart 20
Condition of Road Surfaces

Condition of road surfaces in Hillsdale County (394 respondents – 3.91 average)



Seventy-one respondents (17.8%) indicated that they were “not satisfied at all” with the condition of road surfaces in Hillsdale County. Over sixty percent of respondents (60.8%) rated the condition of road surfaces with a “4” or less.

The only demographic category with a significantly higher average is: ZIP code 49249 (4.96).

Demographic categories with significantly lower averages include: ZIP codes 49242 (3.35) and 49274 (2.87), non-homeowners (3.31), 8th grade education level (1.60), some high school education (2.82), and household income less than \$15,000 (2.81).

There was no strong correlation between responses to this statement and other statements.



The survey respondents were asked, "On a scale from 1 to 10, with 1 being "not a serious problem" to 10 being "a very serious problem," how would you rate the following issues in Hillsdale County?"

An average rating was calculated for each of the factors. Therefore, an average of 5.5 would indicate that the average response was between not a serious problem and a very serious problem.

Crime and Substance Abuse

Issue	2005 Average
Drug or substance abuse	6.48
Crime	4.65

Chart 21
Average Ratings - Crime and Substance Abuse

Drug or Substance Abuse (348 respondents – 6.48 average)

Respondents were asked to rate the issue of drug or substance abuse in Hillsdale County. Almost seventeen percent (16.5%) of respondents rated the issue a "7," while 15.0% rated it an "8." Fifty-nine respondents (13.0%) were unsure or provided no answer.

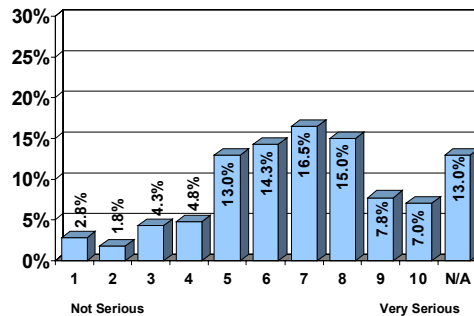


Chart 22
Drug or Substance Abuse

Demographic categories with significantly higher averages include: those who are non-homeowners (7.17), and those who indicated the highest level of education to be 8th grade (8.80).

Demographic categories with significantly lower averages include: those who stated their ZIP code was "other" (5.75), those with the ZIP code 49249 (5.06), and those whose household income is \$100,000 and over (4.33).

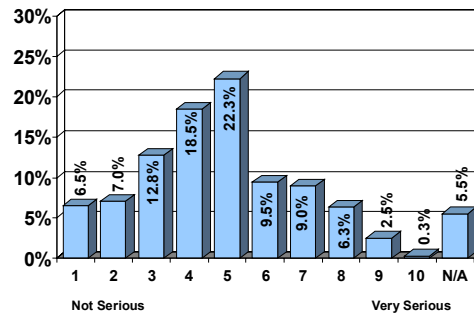
There was a strong correlation between responses to the statement "Rate the seriousness of drug or substance abuse in Hillsdale County" and the statement "Rate the seriousness of crime in Hillsdale County." The higher they rated drug or substance abuse as a problem in Hillsdale County, the more likely they were to rate crime as a serious problem in Hillsdale County.



Crime and Substance Abuse - con't.

Chart 23
Crime

Crime (378 respondents – 4.65 average)



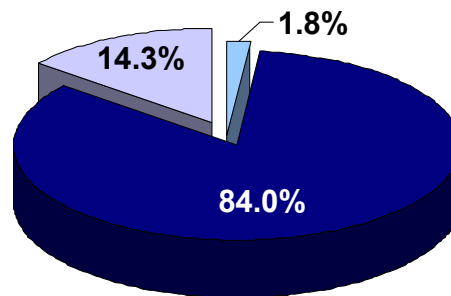
Crime was given a “5” rating by 22.3% of respondents. Over eighteen percent (18.5%) of respondents rated crime a “4,” while 12.8% of respondents gave crime a “3” rating. Over eighteen percent (18.1%) of respondents rated crime in Hillsdale County a “7” or above.

Demographic categories with significantly higher averages include: ZIP code 49250 (5.27), and those age 65+ (5.27).

Demographic categories with significantly lower averages include: ZIP code 49249 (3.30), and those with a household income of \$100,000 and over (3.17).

There was a strong correlation between responses to the statement “Rate the seriousness of crime in Hillsdale County” and the statement “Rate the seriousness of drug or substance abuse in Hillsdale County.” The higher they rated crime as a problem in Hillsdale County, the more likely they were to rate drug or substance abuse as a serious problem in Hillsdale County.

Chart 24
Difficulty Accessing Substance Abuse Treatment Services



Of the 400 respondents, 84.0% do not have difficulty accessing substance abuse treatment services, while 1.8% indicated that they do. Fourteen percent (14.3%) of respondents were unsure or provided no answer.

Seven respondents gave reasons why they have difficulty accessing substance abuse treatment services and their responses include:

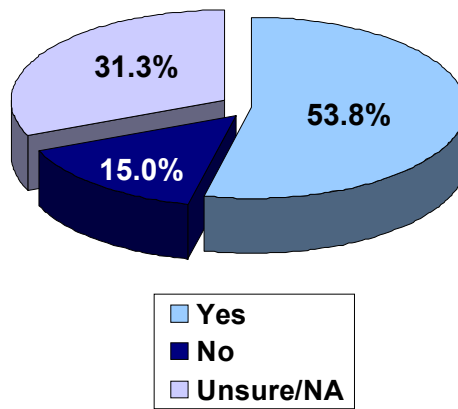
4 Respondents
Need more services

2 Respondents
Cost

1 Respondent
Very poor service



Respondents were asked, "Do you feel sufficient efforts are being made in Hillsdale County to provide substance abuse care and services?" Almost fifty-four percent (53.8%) of respondents indicated that they feel sufficient efforts are being made, while 31.3% of respondents were unsure.



Crime and Substance Abuse - con't.

Chart 25

Efforts to Provide Substance Abuse Care and Services

The 15.0% of respondents who feel that the current efforts are insufficient were asked why, and their responses include:

16 Respondents

Need more services available

7 Respondents

More could be done

6 Respondents

Need to be more publicized

4 Respondents

Expensive

No changes have been made

Too many still doing drugs

3 Respondents

Cutting funds

2 Respondents

Too many arrests

1 Respondent

A lot goes to nobody

After help, still have a drug problem

Emergency room takes too long and then don't get helped

Lack of substance abuse education in schools, dogma of treatment

Need to be more active

No rehab when you get arrested

People have a lot of problems

Problem is growing and nothing is being done they treat the symptoms and not the cause

Teenagers

They don't care

Too many people on Vicodin with doctors freely prescribing it

Too many slipping through the cracks, no adequate counseling for teenagers that they feel they can be open with and still anonymous

Want money, don't care about you

Work in court system



Family Issues

The survey respondents were asked, "On a scale from 1 to 10, with 1 being "not a serious problem" to 10 being "a very serious problem," how would you rate the following issues in Hillsdale County?"

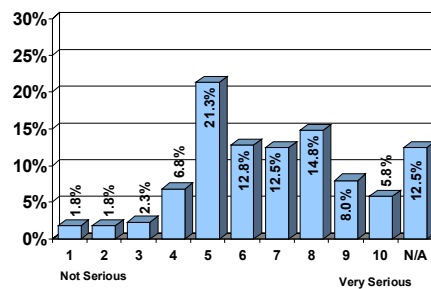
An average rating was calculated for each of the factors. Therefore, an average of 5.5 would indicate that the average response was between not a serious problem and a very serious problem.

Chart 26
Average Ratings - Family Issues

Issue	2005 Average
Single parent households	6.45
Parents not staying together	6.36
Unwed pregnancies	6.23

Parents not staying together (350 respondents – 6.36 average)

Chart 27
Parents Not Staying Together



Over twenty-one percent (21.3%) of respondents rated the issue of parents not staying together a "5," followed by 14.8% of respondents who indicated a rating of "8." Twenty-three respondents (5.8%) stated that parents not staying together is "a very serious problem."

Demographic categories with significantly higher averages include: those who are separated (7.75), highest level of education 8th grade (8.80), and females (6.67).

There are no demographic categories with significantly lower averages.

There was a strong correlation between responses to the statement "Rate the seriousness of parents not staying together in Hillsdale County" and the statement "Rate the seriousness of unwed pregnancies in Hillsdale County." The higher they rated parents not staying together as a problem in Hillsdale County, the more likely they were to rate unwed pregnancies as a serious problem in Hillsdale County.



There was a strong correlation between responses to the statement “Rate the seriousness of parents not staying together in Hillsdale County” and the statement “Rate the seriousness of single parent households in Hillsdale County.” The higher they rated parents not staying together as a problem in Hillsdale County, the more likely they were to rate single parent households as a serious problem in Hillsdale County.

Single parent households (342 respondents – 6.45 average)

Respondents were asked to rate the issue of single parent households on a scale of 1 to 10. Almost seventeen percent (16.8%) of respondents rated the issue an “8,” while 15.3% of respondents indicated an average rating of “5.” Fifty-eight respondents (14.5%) were unsure or did not provide an answer.

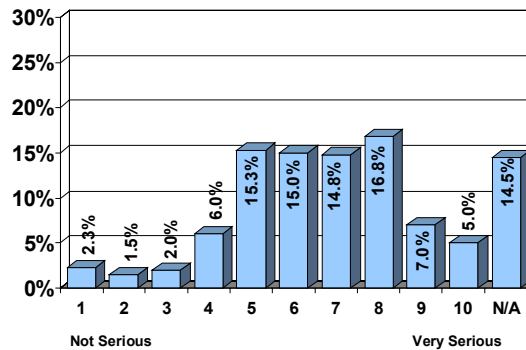


Chart 28
Single Parent Households

The only demographic category with a significantly higher average is: highest level of education 8th grade (9.00),

The demographic categories with significantly lower averages include: those whose highest level of education was indicated as “other” (5.25), and household income \$75,000-\$99,999 (5.74).

There was a strong correlation between responses to the statement “Rate the seriousness of single parent households in Hillsdale County” and the statement “Rate the seriousness of parents not staying together in Hillsdale County.” The higher they rated single parent households as a problem in Hillsdale County, the more likely they were to rate parents not staying together as a serious problem in Hillsdale County.

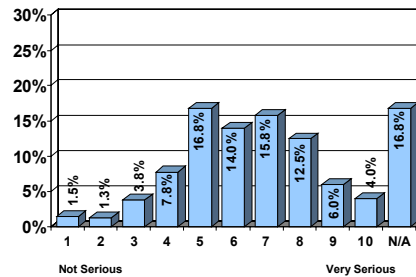
There was a strong correlation between responses to the statement “Rate the seriousness of single parent households in Hillsdale County” and the statement “Rate the seriousness of unwed pregnancies in Hillsdale County.” The higher they rated single parent households as a problem in Hillsdale County, the more likely they were to rate unwed pregnancies as a serious problem in Hillsdale County.



Family Issues - con't.

Chart 29 Unwed Pregnancies

Unwed pregnancies (333 respondents – 6.23 average)



Almost seventeen percent (16.8%) of respondents rated the issue of unwed pregnancies a “5,” followed by 15.8% of respondents who stated a rating of “7.” Only sixteen respondents (4.0%) indicated that unwed pregnancies are a very serious problem in Hillsdale County.

The demographic category with a significantly higher average is: those whose age is between 18 and 34 (6.64).

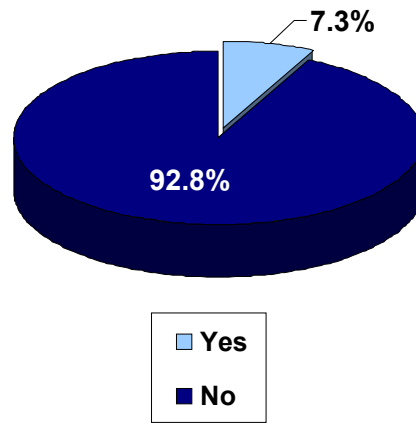
There are no demographic categories with significantly lower averages.

There was a strong correlation between responses to the statement “Rate the seriousness of unwed pregnancies in Hillsdale County” and the statement “Rate the seriousness of parents not staying together in Hillsdale County.” The higher they rated unwed pregnancies as a problem in Hillsdale County, the more likely they were to rate parents not staying together as a serious problem in Hillsdale County.

There was a strong correlation between responses to the statement “Rate the seriousness of unwed pregnancies in Hillsdale County” and the statement “Rate the seriousness of single parent households in Hillsdale County.” The higher they rated unwed pregnancies as a problem in Hillsdale County, the more likely they were to rate single parent households as a serious problem in Hillsdale County.



Just over seven percent (7.3%) of respondents indicated that they use child care regularly, while 92.8% of respondents do not use child care.



Those respondents who use child-care regularly were also asked to rate several different questions about child care in Hillsdale County.

Child Care

Chart 30

Use Child Care Regularly

Respondents rated the questions on a scale from 1 to 10, with 1 being “poor” and 10 being “excellent.” An average rating was calculated for each of the responses. Therefore, an average of 5.5 would indicate that the average response was between “poor” and “excellent.”

Issue	2005 Average
Overall quality of child care	7.62
Availability of day care	7.54
Availability of open child care slots	7.04
Affordability of day care	6.19

Chart 31

Average Ratings - Child Care

Overall quality of child care in Hillsdale County (26 respondents – 7.62 average)

Almost twenty-eight percent (27.6%) rated the overall quality of child care an “8,” followed by 20.7% of respondents who gave it a rating of “7.” Over ten percent (10.3%) felt the overall quality of child care in Hillsdale County was “excellent” or a “10” rating, while 10.3% were unsure or provided no answer.

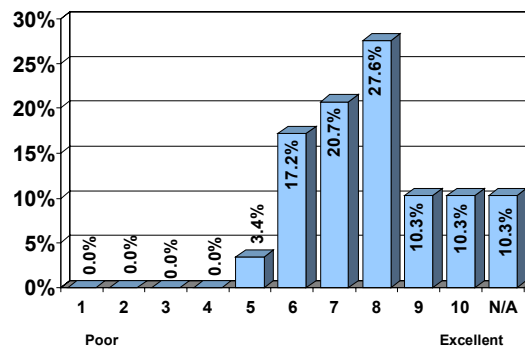


Chart 32

Overall Quality of Child Care

There were no demographic categories with significantly higher averages.



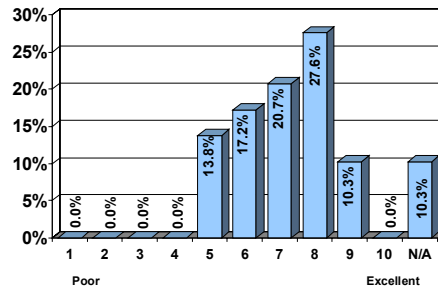
Child Care - con't.

The only demographic category with a significantly lower average is: ages 35-44 (6.71).

There was a strong correlation between responses to the statement "Rate the overall quality of child care in Hillsdale County" and the statement "Rate the availability of day care in Hillsdale County." The higher they rated the overall quality of child care in Hillsdale County, the more likely they were to highly rate the availability of day care in Hillsdale County.

Availability of open child care slots (26 respondents – 7.04 average)

Chart 33
Availability of Open Child Care Slots



Almost twenty-eight percent (27.6%) rated the availability of open child care slots in Hillsdale County an "8," followed by 20.7% of respondents who indicated a rating of "7." No respondents (0.0%) stated that the availability of open child care slots was "excellent" or a rating of "10."

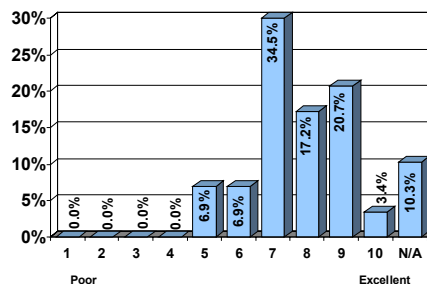
There were no demographic categories with significantly higher averages.

The only demographic category with a significantly lower average is: household income \$75,000-\$99,999 (6.00).

There was a strong correlation between responses to the statement "Rate the availability of open child care slots in Hillsdale County" and the statement "Rate the availability of day care in Hillsdale County." The higher they rated the availability of open child care slots in Hillsdale County, the more likely they were to highly rate the availability of day care in Hillsdale County.

Availability of day care (26 respondents – 7.54 average)

Chart 34
Availability of Day Care



Over one-third of respondents (34.5%) rated the availability of day care as a "7." Only 13.8% of respondents gave ratings of "6" or below. Three percent (3.4%) of respondents stated that they felt the availability of day care was "excellent" or a "10" rating, while 10.3% were unsure.



There were no demographic categories with significantly higher averages.

The only demographic category with a significantly lower average is: ages 35-44 (6.57), and household income \$75,000-\$99,999 (6.40).

There was a strong correlation between responses to the statement "Rate the availability of day care in Hillsdale County" and the statement "Rate the availability of open child care slots in Hillsdale County." The higher they rated the availability of day care in Hillsdale County, the more likely they were to highly rate the availability of open child care slots in Hillsdale County.

There was a strong correlation between responses to the statement "Rate the availability of day care in Hillsdale County" and the statement "Rate the affordability of day care in Hillsdale County." The higher they rated the availability of day care in Hillsdale County, the more likely they were to highly rate the affordability of day care in Hillsdale County.

There was a strong correlation between responses to the statement "Rate the availability of day care in Hillsdale County" and the statement "Rate the overall quality of child care in Hillsdale County." The higher they rated the availability of day care in Hillsdale County, the more likely they were to highly rate the overall quality of child care in Hillsdale County.

Affordability of day care in Hillsdale County (26 respondents – 6.19 average)

Almost thirty-eight percent (37.9%) of respondents who use day care regularly rated the affordability "6" or "7." Over ten percent (10.2%) indicated that the affordability of day care is a "3," "2," or "1." Ten percent (10.3%) were unsure or provided no answer.

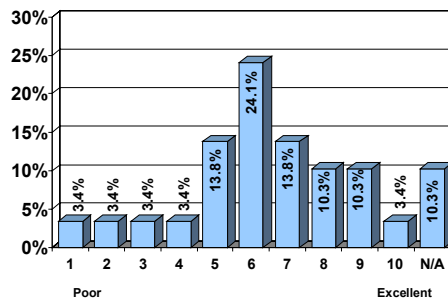


Chart 35
Affordability of Day Care

The only demographic category with a significantly higher average is: ZIP code 49252 (8.33).

There were no demographic categories with significantly lower averages.

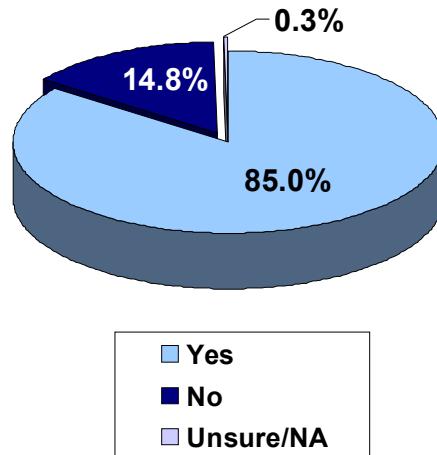


Child Care - con't.

There was a strong correlation between responses to the statement "Rate the affordability of day care in Hillsdale County" and the statement "Rate the availability of day care in Hillsdale County." The higher they rated the affordability of day care in Hillsdale County, the more likely they were to highly rate the availability of day care in Hillsdale County.

Housing

Chart 36
Home Owner



Over eighty percent (85.0%) of the respondents own a home in Hillsdale County, while 14.8% of respondents do not own their own home.

Respondents were asked to rate their satisfaction with housing issues in Hillsdale County.

Respondents rated the issues on a scale from 1 to 10, with 1 being "not satisfied at all" and 10 being "very satisfied." An average rating was calculated for each of the responses. Therefore, an average of 5.5 would indicate that the average response was between not satisfied at all and very satisfied.

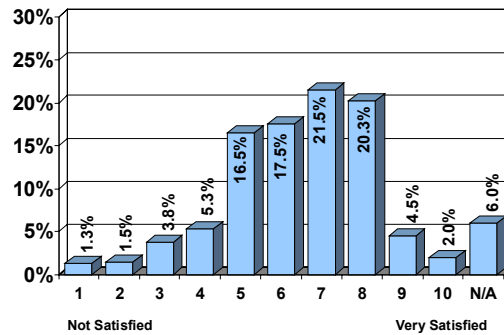
Chart 37
Average Ratings - Housing

Issue	2005 Average
Quality of housing	6.35
Availability of affordable housing	6.18



Quality of housing in Hillsdale County (376 respondents – 6.35 average)

Of the 400 survey respondents, 21.5% rated their satisfaction with the quality of housing in Hillsdale County a “7,” followed by 20.3% of respondents who indicated a rating of “8.” Twenty-four respondents (6.0%) stated that they were unsure or did not provide an answer.



Housing - con't.

Chart 38
Quality of Housing

There are no demographic categories with significantly higher averages.

Demographic categories with significantly lower averages include: ZIP code 49274 (5.31), and Associate’s degree education level (5.35).

There was a strong correlation between responses to the statement “Rate your satisfaction with the quality of housing in Hillsdale County” and “Rate your satisfaction with the affordability of day care in Hillsdale County.” The higher they rated satisfaction with the quality of housing, the more likely they were to highly rate satisfaction with the affordability of day care in Hillsdale County.

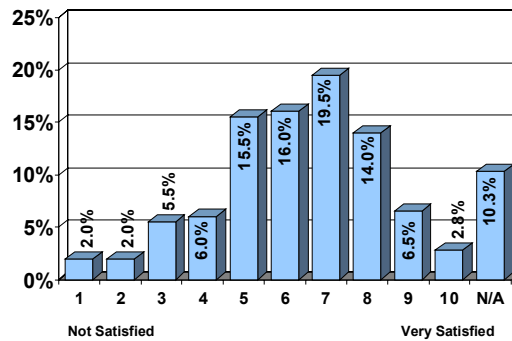
There was a strong correlation between responses to the statement “Rate your satisfaction with the quality of housing in Hillsdale County” and “Rate your satisfaction with the overall quality of child care in Hillsdale County.” The higher they rated satisfaction with the quality of housing, the more likely they were to highly rate satisfaction with the overall quality of child care in Hillsdale County.

There was a strong correlation between responses to the statement “Rate your satisfaction with the quality of housing in Hillsdale County” and “Rate your satisfaction with the availability of affordable housing to fit your needs in Hillsdale County.” The higher they rated satisfaction with the quality of housing, the more likely they were to highly rate satisfaction with the availability of affordable housing to fit their needs in Hillsdale County.



Availability of affordable housing to fit your needs (359 respondents – 6.18 average)

Chart 39
Availability of Affordable Housing



Respondents were asked, “How would you rate your satisfaction with the availability of affordable housing to fit your needs?” Almost half of the respondents (49.5%) rated their satisfaction as a “6,” “7,” or “8.” Forty-one respondents (10.3%) were unsure or provided no answer.

The only demographic category with a significantly higher average is: Separated (7.50).

The only demographic category with a significantly lower average is: ZIP code 49274 (5.33).

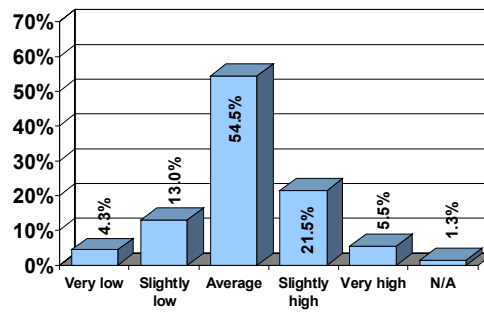
There was a strong correlation between responses to the statement “Rate your satisfaction with the availability of affordable housing to fit your needs in Hillsdale County” and the statement “Rate the quality of housing in Hillsdale County.” The higher they rated the availability of affordable housing in Hillsdale County, the higher they were to rate the quality of housing in Hillsdale County.

There was a strong correlation between responses to the statement “Rate your satisfaction with the availability of affordable housing to fit your needs in Hillsdale County” and the statement “Rate the affordability of day care in Hillsdale County.” The higher they rated the availability of affordable housing in Hillsdale County, the higher they were to rate the affordability of day care in Hillsdale County.

There was a strong correlation between responses to the statement “Rate your satisfaction with the availability of affordable housing to fit your needs in Hillsdale County” and the statement “Rate the overall quality of child care in Hillsdale County.” The higher they rated the availability of affordable housing in Hillsdale County, the higher they were to rate the overall quality of child care in Hillsdale County.



Respondents were asked what they thought about the cost of living in Hillsdale County. Over fifty-four percent (54.5%) of respondents stated that the cost of living in Hillsdale County is average, while 21.5% of respondents felt it was slightly high and 13.0% of respondents felt it was slightly low. Five respondents (1.3%) were unsure.



Housing - con't.

Chart 40

Cost of Living in Hillsdale County

The survey respondents were then asked to rate their satisfaction with four health care issues in Hillsdale County. Respondents rated the services on a scale from 1 to 10, with 1 being “not satisfied at all” and 10 being “very satisfied.”

An average rating was calculated for each of the responses. Therefore, an average of 5.5 would indicate that the average response was between “not satisfied at all” and “very satisfied.”

Health Care

Issue	2005 Average
Availability of health care services	6.90
Quality of health care services	6.83
Cost of health care services	4.95
Availability of affordable health insurance	4.92

Chart 41

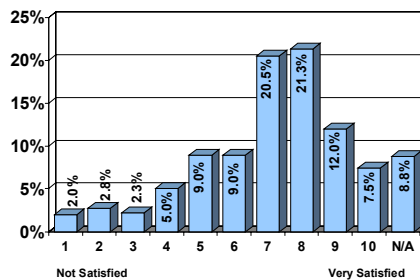
Average Ratings - Health Care



Health Care - con't.

Chart 42
Availability
of Health
Care Services

Availability of health care services in Hillsdale County (365 respondents – 6.90 average)



Over twenty-one percent (21.3%) of respondents rated the availability of health care services an “8,” followed by 20.5% of respondents who indicated a rating of “7.” Over seven percent (7.5%) of respondents were “very satisfied” (a rating of “10”) with the health care services available in Hillsdale County.

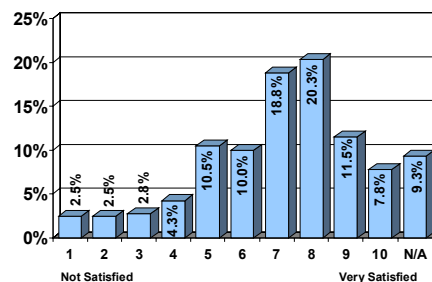
The only demographic category with a significantly higher average is: those who are separated (7.75).

The only demographic category with a significantly lower average is: ZIP code 49249 (5.29).

There was a strong correlation between responses to the statement “Rate your satisfaction with the availability of health care services in Hillsdale County” and the statement “Rate your satisfaction with the quality of health care services in Hillsdale County.” The higher they rated satisfaction with the availability of health care services in Hillsdale County, the more likely they were to highly rate satisfaction with the quality of health care services in Hillsdale County.

Chart 43
Quality of
Health Care
Services

Quality of health care services in Hillsdale County (363 respondents – 6.83 average)



Almost forty percent (39.6%) of respondents rated their satisfaction with the quality of health care services an “8,” “9,” or “10.” Thirty-one respondents (7.8%) stated that they are “very satisfied” (a rating of “10”) with the quality of health care services in Hillsdale County, while 9.3% of respondents were unsure.



Demographic categories with significantly higher averages include: widowed (7.69).

Demographic categories with significantly lower averages include: ZIP code 49249 (4.81), and education level "other," (4.67).

There was a strong correlation between responses to the statement "Rate your satisfaction with the quality of health care services in Hillsdale County" and the statement "Rate your satisfaction with the availability of health care services in Hillsdale County." The higher they rated satisfaction with the quality of health care services in Hillsdale County, the more likely they were to highly rate satisfaction with the availability of health care services in Hillsdale County.

Availability of affordable health insurance in Hillsdale County (340 respondents – 4.92 average)

Over twelve percent (12.5%) of respondents rated the availability of affordable health insurance "6," while 12.0% of respondents gave a rating of "5." Forty-eight respondents (12.0%) stated that they were "not satisfied" at all with the availability of affordable health insurance in Hillsdale County, while 15.0% were unsure or provided no answer.

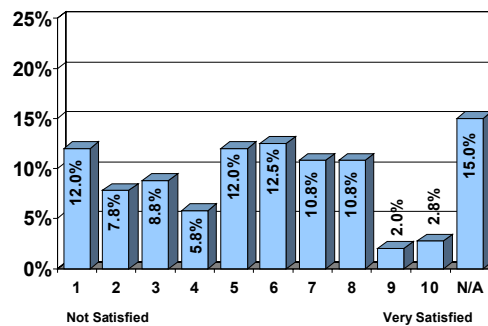


Chart 44
Availability of Affordable Health Insurance

Demographic categories with significantly higher averages include: ZIP code 49242 (5.41), African American/Black (7.00), and household income \$75,000-\$99,999 (5.80).

Demographic categories with significantly lower averages include: ZIP codes 49249 (3.59) and 49274 (3.75), and age 65+ (4.24).

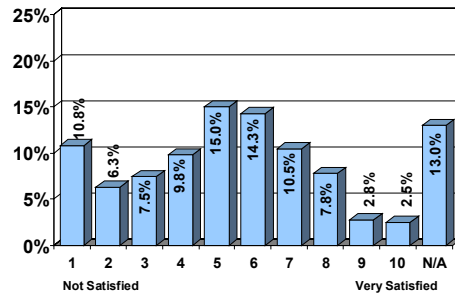
There was a strong correlation between responses to the statement "Rate your satisfaction with the availability of affordable health insurance in Hillsdale County" and the statement "Rate your satisfaction with the cost of health care services in Hillsdale County." The higher they rated satisfaction with the availability of affordable health insurance in Hillsdale County, the more likely they were to highly rate satisfaction with the cost of health care services insurance in Hillsdale County.



Health Care - con't.

Chart 45
Cost of Health Care Services

Cost of health care services in Hillsdale County (348 respondents – 4.95 average)



When asked to rate the cost of health care services in Hillsdale County, 15.0% of respondents indicated a rating of “5,” followed by 14.3% of respondents who indicated a “6” rating. Forty-three respondents (10.8%) gave a rating of “1,” meaning that they were “not satisfied at all” with the cost of health care in Hillsdale County.

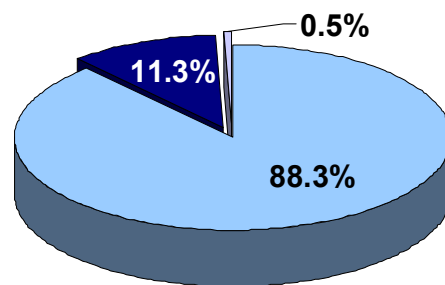
Demographic categories with significantly higher averages include: African American/Black (6.60).

The only demographic category with a significantly lower average is: “some college, no degree” level of education (4.22).

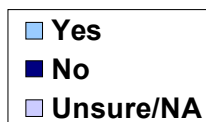
There was a strong correlation between responses to the statement “Rate your satisfaction with the cost of health care services in Hillsdale County” and the statement “Rate your satisfaction with the availability of affordable health insurance in Hillsdale County.” The higher they rated satisfaction with the cost of health care services in Hillsdale County, the more likely they were to highly rate satisfaction with the availability of affordable health insurance in Hillsdale County.

Respondents were then asked several questions about their health coverage and if they have any difficulty accessing health services.

Chart 46
Have Health Coverage



A large majority of respondents, 88.3%, have some type of health coverage, such as health insurance, prepaid plans, or government plans, while 11.3% do not. Two respondents were unsure if they have health coverage.



Over ninety percent (93.8%) of respondents indicated that they do not have any difficulty accessing basic health care.

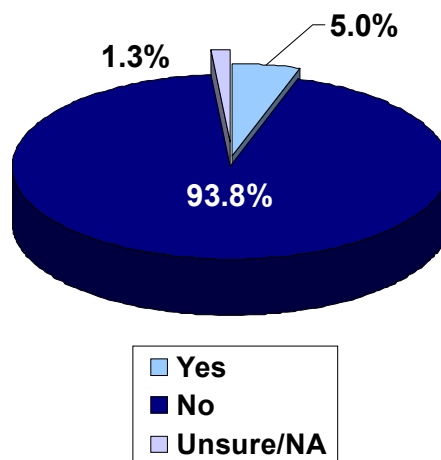
The 20 respondents who stated they have difficulty accessing basic health care were asked to indicate why they felt this way. Their responses include:

8 Respondents
Cost

6 Respondents
Don't accept insurance

3 Respondents
No insurance

1 Respondent
Deductible is too high, have to go over \$2,000 before they will cover anything
Don't have doctor and I'm unemployed
Hospital not turning in claims



Health Care - con't.

Chart 47
Difficulty Accessing Basic Health Care

Almost ninety-three percent (92.8%) of respondents indicated that they do not have any difficulty accessing prescriptions, while 6.3% of respondents stated they do have difficulty.

The 25 respondents who stated they have difficulty accessing prescriptions were asked to indicate why they felt this way. Their responses include:

15 Respondents
Cost

5 Respondents
Insurance doesn't cover

2 Respondents
No insurance

1 Respondent
Hard to find a doctor to prescribe
Refused to refill when needed
Transportation to get prescriptions

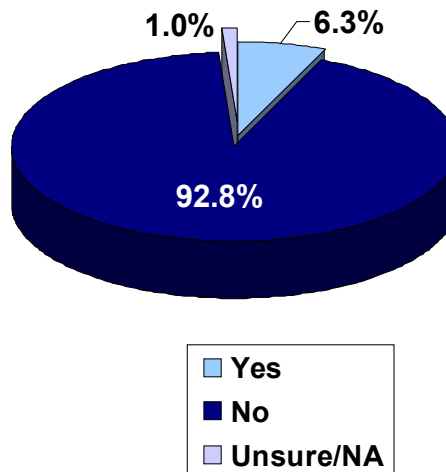
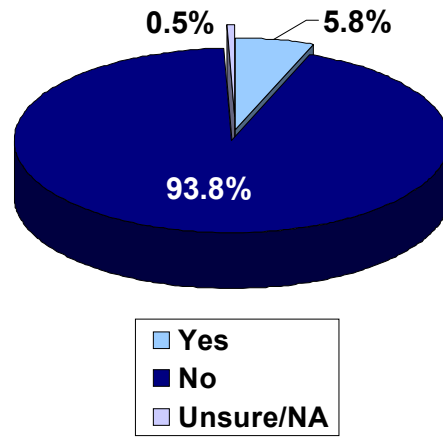


Chart 48
Difficulty Accessing Prescriptions



Health Care - con't.

Chart 49
Difficulty
Accessing
Dental Care



Of the 400 respondents, 93.8% do not have difficulty accessing dental care, while 5.8% indicated that they do. Twenty-three respondents gave reasons why they have difficulty accessing dental care and their responses include:

8 Respondents

Cost
Insurance doesn't cover

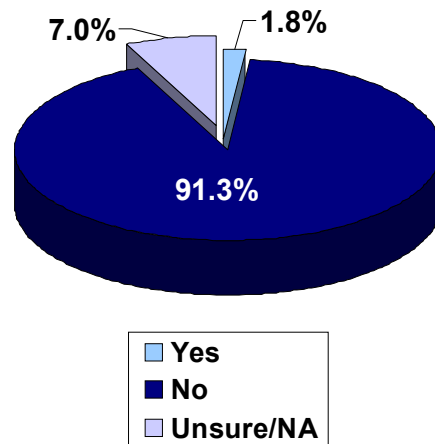
2 Respondents

Don't accept insurance
No insurance

1 Respondent

Don't have a doctor
Don't take Medicare
Hard to find dentist

Chart 50
Difficulty
Accessing
Mental
Health Care



When respondents were asked if they have any difficulty accessing mental health care, 1.8% indicated that they do have difficulty, while 91.3% do not. Twenty-eight respondents (7.0%) were unsure or provided no answer. Respondents who stated that accessing mental health care is difficult mentioned the following reasons why they felt this way:

3 Respondents

Cost

2 Respondents

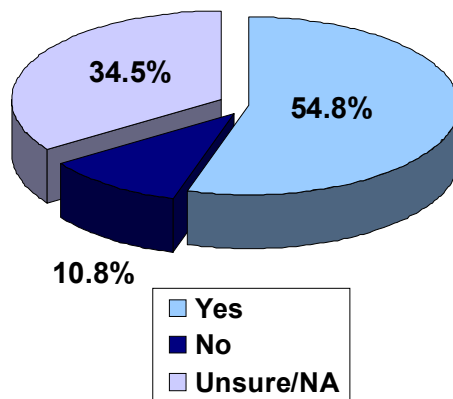
No quality psychiatrists

1 Respondent

Insurance
Not many options available



Over half (54.8%) of respondents feel that sufficient efforts are being made to provide mental health care and services in Hillsdale County. Over thirty-four percent (34.5%) of respondents were unsure or provided no answer.



Health Care - con't.

Chart 51
**Efforts to
Provide
Mental
Health Care**

The 43 respondents (10.8%) who did not feel that sufficient efforts are being made were asked why they felt that way and their reasons include:

14 Respondents

Need more services available

6 Respondents

Need to be more publicized

4 Respondents

*Cutting funds
Needs improvement*

3 Respondents

Expensive

1 Respondent

*Emergency room takes too long and then don't get helped
Hearing people
It seems non existent
Lack of quality
No efforts what so ever
People don't feel comfortable going
Problems are growing and nothing is being done, treating the symptoms and not the cause
They don't care
They medicate people too quickly without fixing the issue
Too many not getting help
Too many slipping through the cracks, no adequate counseling for teenagers that they feel they can be open with and still anonymous
Work in court system*



Health Care - cont.

Chart 52

Turn to for Help

Turn to for help	% Respondents
Physician	47.5%
Family member	17.5%
Friends/relatives/co-workers	9.3%
Substance Abuse Clinic/Agency	8.8%
Pastor/Clergy	8.8%
Mental Health Clinic/Agency	7.3%
Crisis Line/211	2.8%
Psychologist/Psychiatrist	1.8%
Internet/website	1.3%
School counselor	1.3%
Other	6.5%
Unsure/NA	20.8%

*Chart totals more than 100% as respondents were able to indicate more than one response.

When respondents were asked who they would turn to for help with a substance abuse or mental health concern, the most frequent response was a physician which was stated by 47.5% of respondents. Respondents also indicated that they would turn to family members (17.5%) or friends/relatives/co-workers (9.3%). Over twenty percent (20.8%) of respondents said that they were unsure who they would turn to for help with a substance abuse or mental health concern or need.

Below are additional responses that were given but not included in the chart:

4 Respondents

*LifeWays
Work*

3 Respondents

*Jackson
Police*

2 Respondents

Health department

1 Respondent

*911
BHC
Counselor
FIA
Hospital
Insurance
Journeys
Law
Out of county
Social services*



Respondents were then asked to rate their satisfaction with several different educational issues in Hillsdale County. Respondents rated the issues on a scale from 1 to 10, with 1 being “not satisfied at all” and 10 being “very satisfied.”

An average rating was calculated for each of the responses. Therefore, an average of 5.5 would indicate that the average response was between “not satisfied at all” and “very satisfied.”

Issue	2005 Average
Your local public school district	6.99
Availability of higher education	6.80
Number of K-12 educational options	6.77

Education

Chart 53

Average Ratings - Education

Number of K-12 educational options in your community (325 respondents – 6.77 average)

When asked to rate their satisfaction with the number of K-12 educational options in their community, 16.5% of respondents indicated a rating of “8,” followed by 12.8% of respondents who indicated a rating of “7.” Almost nineteen percent (18.8%) of respondents were unsure or did not provide an answer.

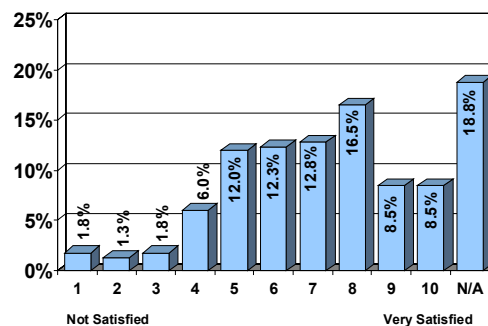


Chart 54

Number of K-12 Educational Options

The only demographic category with a significantly higher average is: widowed (7.76).

Demographic categories with significantly lower averages include: ZIP codes 49249 (5.33), 49252 (5.63), and household income \$35,000-\$49,999 (6.28).

There was a strong correlation between responses to the statement “Rate your satisfaction with the number of K-12 educational options in your community” and “Rate your satisfaction with your local public school district.” The higher they rated satisfaction with the number of K-12 educational options in Hillsdale County, the more likely they were to highly rate satisfaction with the local public school district in Hillsdale County.



Education- con't.

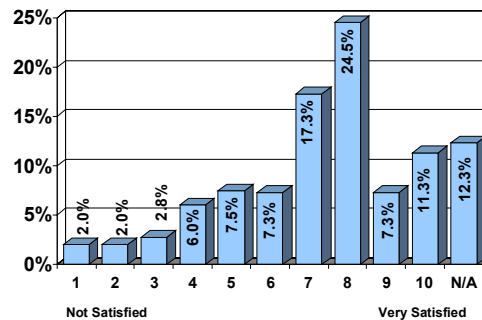
Twenty-seven percent (27.5%) of respondents with no children under 18 years old rated the number of K-12 options in their community a "7" or an "8." Over fourteen percent (14.6%) of respondents with no children under 18 indicated a rating of "9" or "10," while 24.5% were unsure.

Almost twenty percent (18.9%) of respondents with children rated the number of K-12 options in their community an "8." Over thirteen percent (13.3%) of respondents with children under 18 years old gave a rating of a "10" or "Very satisfied," while 6.3% were unsure.

Among the school districts that respondents live in, Jonesville and Pittsford scored the highest percentages of "Very satisfied" ratings with 14.3% and 14.8% respectively for the number of K-12 options. Jonesville school district also had one of the highest percentages (4.8%) of "Not satisfied at all" or "1" ratings. Addison school district had 6.9% of respondents rate it a "1." Over one-quarter of respondents in Reading (25.0%) and Addison (34.5%) school districts said that they were unsure of the K-12 options in their community. Almost one-third (32.8%) of respondents living in the Hillsdale school district rated the number of K-12 options a "7" or "8."

Your local public school district (351 respondents – 6.99 average)

Chart 55
Local Public School District



Respondents were asked to rate their satisfaction with their local public school district. Over sixty percent (60.4%) of respondents indicated a rating of "7" or higher. Over eleven percent (11.3%) of respondents stated that they were "very satisfied" with their local public school district. Forty-nine respondents (12.3%) were unsure or provided no answer.

Demographic categories with significantly higher averages include: ZIP code 49250 (7.57), 8th grade education level (9.40), American Indian/Native American (9.00), and household income less than \$15,000 (7.84).

There are no demographic categories with significantly lower averages.



There was a strong correlation between responses to the statement “Rate your satisfaction with your local public school district” and the statement “Rate your satisfaction with the number of K-12 educational options in your community.” The higher they rated satisfaction with the local public school district in Hillsdale County, the more likely they were to highly rate satisfaction with the number of K-12 educational options in Hillsdale County.

There was a strong correlation between responses to the statement “Rate your satisfaction with your local public school district” and the statement “Rate your satisfaction with the affordability of local day care in Hillsdale County.” The higher they rated satisfaction with the local public school district in Hillsdale County, the more likely they were to highly rate satisfaction with the affordability of day care in Hillsdale County.

There was a strong correlation between responses to the statement “Rate your satisfaction with your local public school district” and the statement “Rate your satisfaction with the overall quality of child care in Hillsdale County.” The higher they rated satisfaction with the local public school district in Hillsdale County, the more likely they were to highly rate satisfaction with the overall quality of child care in Hillsdale County.

Twenty-four percent (24.2%) of respondents with no children under 18 years old rated their local public school district in their community an “8.” Almost sixteen percent (15.8%) of respondents with no children under 18 indicated a rating of “9” or “10,” while 16.5% were unsure.

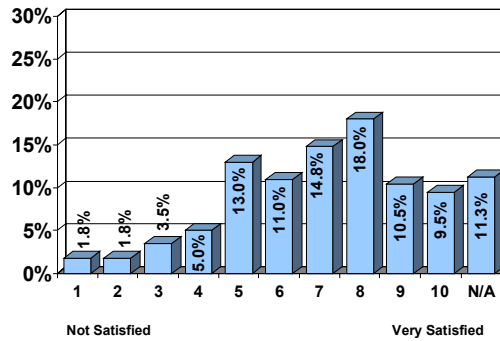
Twenty-five percent (25.2%) of respondents with children rated their local public school district an “8.” Over fifteen percent (15.7%) of respondents with children under 18 years old gave a rating of a “10” or “Very satisfied,” while only 3.0% were unsure.

Among the school districts that respondents live in, Jonesville and Pittsford scored the highest percentages of “Very satisfied” ratings with 15.9% and 22.2% respectively for satisfaction with the school district. Almost one-third (31.0%) of respondents in Addison school districts said that they were unsure of their satisfaction with the local public school district. The most common rating for the Hillsdale school district was an “8,” with 26.6% of respondents indicating this rating.



Availability of higher education in Hillsdale County (355 respondents – 6.80 average)

Chart 56
Availability of Higher Education



Of the 400 respondents, 18.0% rated the availability of higher education in Hillsdale County an "8," followed by 14.8% of respondents who indicated a rating of "7." Over nine percent (9.5%) of respondents stated that they were "very satisfied" or gave a "10" rating.

Demographic categories with significantly higher averages include: ZIP code 49250 (7.42), and widowed (7.92).

The only demographic category with a significantly lower average is: age 18-34 (6.19).

There was no strong correlation between responses to this statement and other statements.



The respondents were asked several questions about employment in Hillsdale County.

The 209 respondents who are currently employed were asked to indicate which county they work in. Just under eighty percent (79.4%) of respondents are employed in Hillsdale County. Almost ten percent (9.6%) of respondents work in Jackson County and 3.8% of respondents work in Branch County. Other responses are indicated below:

County	% Respondents
Hillsdale	79.4%
Jackson	9.6%
Other	4.8%
Branch	3.8%
Lenawee	2.4%

Employment

Chart 57
County of Employment

2 Respondents

Indiana

1 Respondent

*Fremont, Indiana
Stuba County, Indiana*

The next question asked the 43 respondents who do not work in Hillsdale County to indicate their current job title and responsibilities. Their responses are listed below:

4 Respondents

Nurse

3 Respondents

Teacher

2 Respondents

*Construction
Factory worker
Supervisor*

1 Respondent

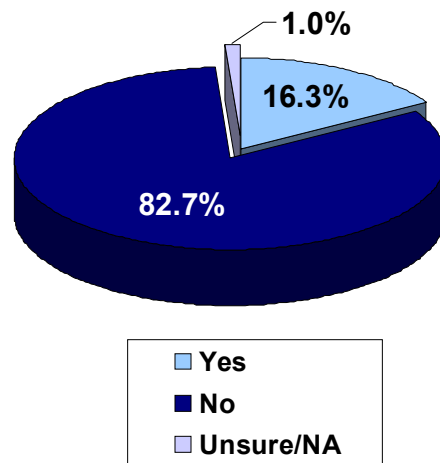
*Accountant
Bank Assistant Manager
Bartender
Business owner
Carpenter
Computer programmer
Die Maker/ Train apprentices
Engineer
Family advocate head start
General laborer
Graphic designer
Hourly job
Human resource manager*



Employment - con't.

Install fences
Landscaper
Manager
Office administration
Own a construction business
Restaurant Manager
Sales
Sr. Manufacturing Engineer
Store manager
Teacher consultant-work with students who are impaired
Technician for brain rehabilitation
Tool and die maker
Transformer maker
Word processing assistant

Chart 58
Changed Jobs or Employment in Past Three Years



Respondents who are employed were asked whether they had changed jobs or employment in the past three years. Over eighty percent (82.7%) of respondents said that they had not changed jobs in the past three years, while 16.3% of respondents said that they have.

The 35 respondents who said that they have changed jobs or employment in the past three years were asked why they changed jobs.

Their answers are listed below:

5 Respondents

Moved

3 Respondents

Business closed
Business relocated
Laid off
Relocated

2 Respondents

Downsizing
Started own business

1 Respondent

Added a second job
Better opportunity
Conflicted with family
Experience
Felt like changing jobs
Funds cut in Hillsdale
Had a better job offer
Insurance



Location
 Money
 New company
 Switched to work in correct field
 Temporary work
 Wages and hours

Employment - con't.

Employed respondents were asked if their employer provides job related training. Over half (51.7%) of the respondents said that their employer does provide job related training, while 34.0% said that their employer does not provide training. Over fourteen percent (14.4%) said that they were unsure whether or not their employer provides training.

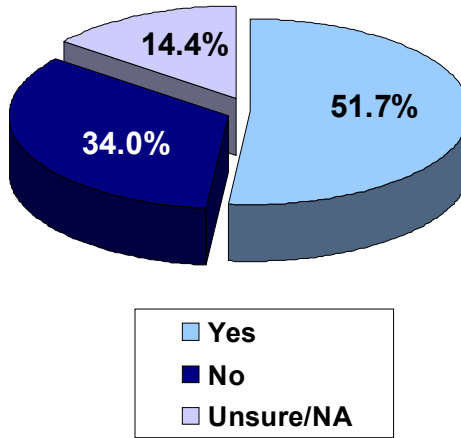


Chart 59
Employer Provides Job Related Training

The 108 respondents who indicated that their employer provides job related training were asked what type of training their employer provides. Below are their responses:

25 Respondents
 General

6 Respondents
 CPR, first aid
 On the job

4 Respondents
 Computer applications
 Continued education
 Educational
 Management

3 Respondents
 Schooling

2 Respondents
 Basic construction
 Die making
 Driving
 Nursing
 Safety
 Seminars

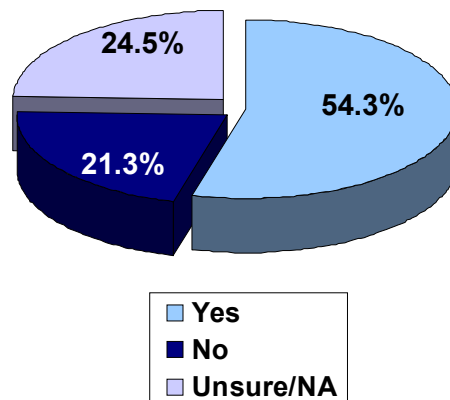
1 Respondent
 Brain, CPR, behavioral labs, medical
 Business



Employment - con't.

Certification
 Conferences
 Conferences/classes
 Counseling
 Design engineering
 Development
 Electrical, management, and schooling
 Electrician classes
 Engineering, schooling
 Excel course
 Hospital, schooling
 How to lay fence
 In service, methodology
 Landscaping
 Machine language
 Maintenance
 Masonry
 Mechanical
 Medical, general
 Medical, in service
 Mental health
 Newspaper training
 On the job, schooling reimbursement
 Ongoing domestic training, how to handle violence, youth training
 Online programs
 Pay half for schooling
 Professional development
 Related to the trade, maintenance and schooling
 Road commission
 Security
 Seminars, computer applications
 Service
 Statistical
 Technical
 Technical, educational
 Technical, social skills
 Whatever needed, college
 Working with families, development

Chart 60
Employers
Sensitive to
Family Needs



One question asked respondents if they felt employers in Hillsdale County are sensitive to family needs. More than half of respondents (54.3%) felt that employers are sensitive to family needs. Almost one-quarter of respondents (24.5%) were unsure, while 21.3% of respondents did not feel that employers are sensitive to family needs.



The 85 respondents who felt that employers are not sensitive to family needs provided the following reasons why they felt this way:

Employment - con't.

17 Respondents

They don't care

5 Respondents

Don't pay enough

4 Respondents

Lack of jobs

3 Respondents

Benefits

Job in jeopardy for taking off work for sick kids

2 Respondents

Companies don't cater to family needs and they should

More into making money than to secure employees

Sick time

1 Respondent

Age discriminatory

Availability

_____ is a horrible merchant

*Can't take off time for sickness or you get docked pay and there aren't any raises
once you are working*

Care about themselves

Don't hire people

Don't keep businesses here

Don't realize what people are facing taking factories away

Don't really think of people, plants closing, they are all about money

Economy is bad more and more pressure on employers

*Employers are struggling to survive themselves its hard to afford to be sensitive to
needs*

Expect work to come first

Family medical leave not allowed

Fired from job

Got hurt at work and got fired for it

Have read things in the newspaper

Have to beg for time off

Have to do mandatory overtime

Heard they aren't

*Hours are long; wages are low and constantly have to work the swing shift for
Dow*

I have heard about things in the newspaper

In an emergency it's hard to find time off

Insurance

Job comes first before family

Just come in contact with many people who have employers that don't care

Just got laid off

Know they can get away with it

Lack of compassion

Laid off people

Many businesses are leaving town

More benefits



Employment - con't.

Not considerate
Not employee friendly
Not sensitive to vacation time
Not very fair choices
Not willing to hire with a disability
Put families first
So many are employed by factories
System takes children away from families without helping first
Taking businesses overseas
There are only jobs open in the service industries that pay wages and hourly not salary
They don't offer a lot
Too busy with own lives
Too materialistic
Unwillingness to work with people who need time off
Wages

Respondents were then asked to rate their satisfaction with employment issues in Hillsdale County. Respondents rated the issues on a scale from 1 to 10, with 1 being "not satisfied at all" and 10 being "very satisfied."

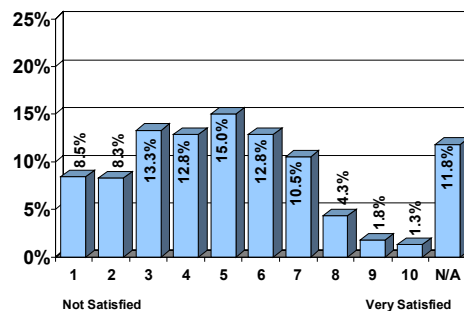
An average rating was calculated for each of the responses. Therefore, an average of 5.5 would indicate that the average response was between "not satisfied at all" and "very satisfied."

Chart 61
Average Ratings - Employment

Issue	2005 Average
Availability of job or technical training	4.57
Availability of living wage jobs	3.85

Availability of job or technical training in Hillsdale County (353 respondents – 4.57 average)

Chart 62
Availability of Job or Technical Training



Fifteen percent (15.0%) of respondents rated their satisfaction with the availability of job or technical training a "5," followed by 13.3% of respondents who indicated a "3." Over eight percent (8.5%) of respondents were not satisfied at all, and 11.8% were unsure or did not provide an answer.



There are no demographic categories with significantly higher averages.

Demographic categories with significantly higher averages include: ZIP code 49266 (2.94), 8th grade education level (1.67), and associate's degree education level (3.42).

There was a strong correlation between responses to the statement "Rate your satisfaction with the availability of jobs or technical training in Hillsdale County" and "Rate your satisfaction with the availability of living wage jobs in Hillsdale County." The higher they rated satisfaction with the availability of jobs or technical training in Hillsdale County, the more likely they were to highly rate satisfaction with the availability of jobs to support basic needs in Hillsdale County.

Availability of living wage jobs in Hillsdale County (374 respondents – 3.85 average)

Over forty-one percent (41.3%) of respondents rated their satisfaction with the availability of living wage jobs a "1," "2," or "3." Forty-eight respondents (12.0%) stated that they were "not satisfied at all" (a rating of "1"), while less than three percent (2.9%) gave a rating of "8" or above.

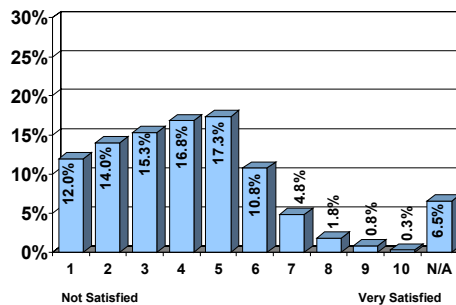


Chart 63
Availability of Living Wage Jobs

There are no demographic categories with significantly higher averages.

Demographic categories with significantly lower averages include: ZIP code 49266 (2.67), divorced (3.07), and associate's degree (3.19).

There was a strong correlation between responses to the statement "Rate your satisfaction with the availability of living wage jobs in Hillsdale County" and "Rate your satisfaction with the availability of jobs or technical training in Hillsdale County." The higher they rated satisfaction with the availability of jobs to support basic needs in Hillsdale County, the more likely they were to highly rate satisfaction with the availability of jobs or technical training in Hillsdale County.



Employment - con't.

Chart 64 Barriers to Employment

Barriers to Employment	% Respondents
Lack of jobs	62.8%
Basic literacy and education level	10.0%
Job skills and training	3.3%
Transportation	1.8%
Health concerns	1.5%
Child care	0.5%
Other	8.8%
Unsure/NA	11.5%

When asked to rate the largest barrier to employment in Hillsdale County, 62.8% of respondents cited a lack of jobs. Ten percent (10.0%) of respondents felt the largest barrier to employment was basic literacy and education level. Other responses were listed by thirty-five respondents (8.8%) and include:

7 Respondents

Wages

5 Respondents

People are lazy

3 Respondents

Outsourcing

2 Respondents

Taxes

Unions

1 Respondent

Age

Auto industry leaving

Benefits

Closed minded; not very visionary

Commissioner

Cost is too high for employers

Discrimination

Expansion

Government

Location

Not going to church

Planning commission is anti-industry; there are no incoming businesses

Temp services

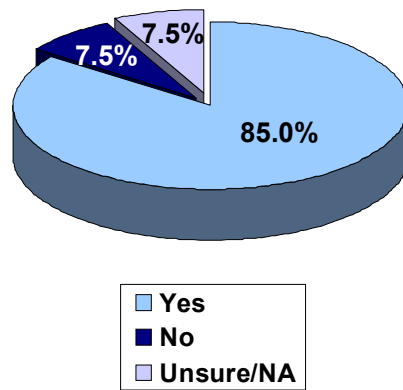
Too many people like being on welfare

Wages and benefits

Wages and hours



Respondents were asked if they knew how to access assistance in finding employment if they needed to. Eighty-five percent (85.0%) of respondents answered that they do know how to access assistance, while 7.5% said that they do not. Thirty respondents (7.5%) said that they were unsure or did not provide an answer.



Employment - con't.

Chart 65
Access Assistance in Finding Employment

Respondents were asked if they own or manage a business. Seventy-three (73.0%) of respondents indicated that they do not own or manage a business, while 27.0% of respondents do.

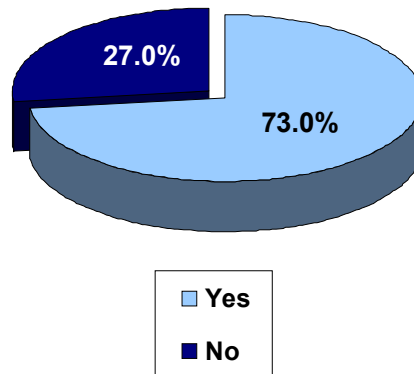


Chart 66
Own or Manage a Business

Respondents who own or manage a business were asked if they knew how to access assistance in finding employees. Of the 108 respondents who indicated that they own or manage a business, 60.2% said that they did not know how to access assistance in finding employees, while 38.9% said that they do.

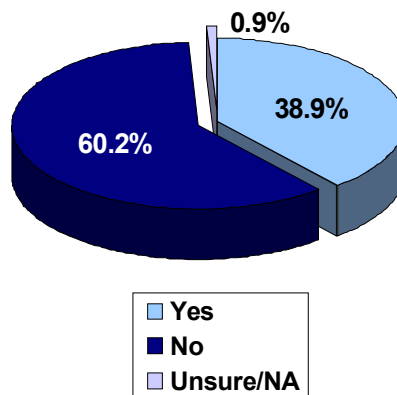
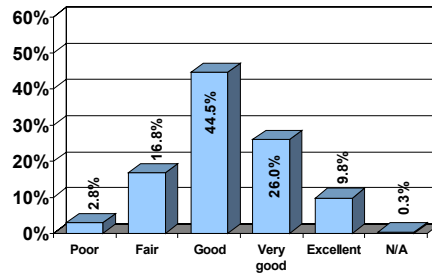


Chart 67
Access Assistance in Finding Employees



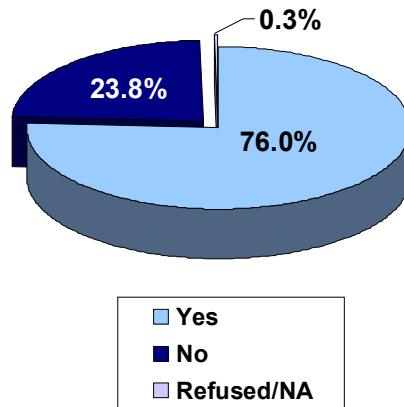
Personal Health

Chart 68
General Health of Respondent



Respondents were asked to indicate their general health. Most respondents stated that their health was good (44.5%) or very good (26.0%). Only 2.8% of respondents rated their general health as poor, while 9.8% felt their health is excellent.

Chart 69
Exercise or Physical Activity



Seventy-six percent (76.0%) of respondents indicated that they had participated in some type of exercise or physical activity in the past month, while 23.8% of respondents had not. One respondent (0.3%) was unsure or did not provide an answer.

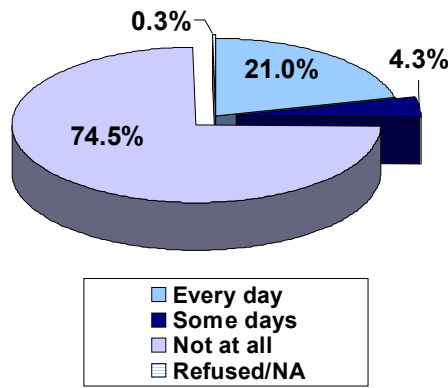
Chart 70
Last Complete Physical

	2005 % Respondents
Very recently (last month or two)	23.3%
Within the last year	45.0%
Within the last two years	12.5%
Over two years ago	13.3%
Never	2.0%
Unsure/NA	4.0%

The next question asked respondents to indicate the last time they had a complete physical. Almost half of the respondents (45.0%) have had a complete physical within the past year. Twenty-three percent (23.3%) of respondents have had a complete physical within the last month or two. Two percent (2.0%) or eight respondents have never had a complete physical, while 4.0% were unsure.



Eighty-four of the 400 respondents (21.0%) indicated that they smoke cigarettes everyday. Just over four percent (4.3%) of respondents smoke on some days, while 74.5% of Hillsdale County respondents stated that they do not smoke at all.



Personal Health - cont.

Chart 71
Smoke Cigarettes

Respondents were asked, "Considering all types of alcoholic beverages, how many times during the past 30 days did you have five or more drinks?" Over three quarters (79.5%) of the respondents said "none," while 9.1% of respondents stated they had five or more drinks once or twice in the past 30 days.

Number of times	2005	
	Frequency	%
1 to 2	36	9.1%
3 to 5	24	6.1%
6 to 10	10	2.6%
11 to 15	1	0.3%
16 to 20	2	0.5%
Over 20	1	0.3%
None	318	79.5%
Unsure/NA	6	1.5%

* Responses total more than 100% due to rounding

Chart 72
Five Drinks or More in Past 30 Days



Culture and Recreation

The survey respondents were asked to rate their satisfaction with different cultural and recreational opportunities in Hillsdale County. Respondents rated the services on a scale from 1 to 10, with 1 being “not satisfied at all” and 10 being “very satisfied.”

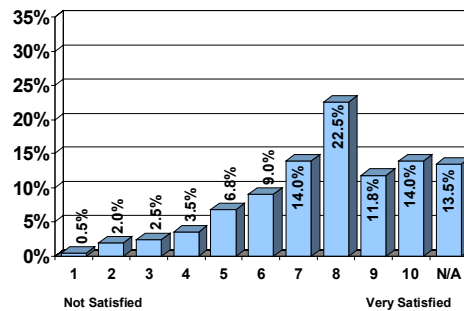
An average rating was calculated for each of the responses. Therefore, an average of 5.5 would indicate that the average response was between not satisfied at all and very satisfied.

Chart 73 Average Ratings - Culture and Recreation

Issue	2005 Average
Quality of libraries	7.37
Quality of parks	6.97
Recreational activities	6.16
Cultural activities	5.47

The quality of libraries in Hillsdale County (346 respondents – 7.37 average)

Chart 74 Quality of Libraries



Over forty-eight percent (48.3%) of respondents rated their satisfaction with the quality of libraries in Hillsdale County as an “8,” “9,” or “10.” Fifty-six respondents (14.0%) were “very satisfied” (a “10” rating) with the quality of libraries and 54 respondents (13.5%) were unsure or provided no answer.

Demographic categories with significantly higher averages include: widowed (8.64), 65+ (8.25), and 8th grade education level (9.67).

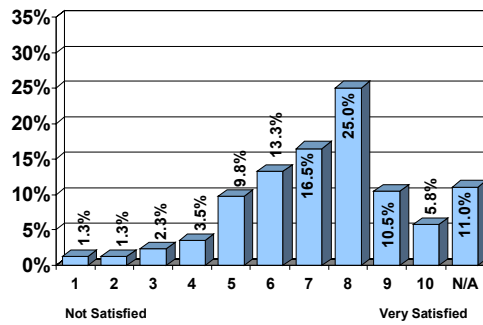
There are no demographic categories with significantly lower averages.

There was a strong correlation between responses to the statement “Rate your satisfaction with the quality of libraries in Hillsdale County” and the statement “Rate your satisfaction with the quality of parks in Hillsdale County.” The higher they rated satisfaction with the quality of libraries in Hillsdale County, the more likely they were to highly rate satisfaction with the quality of parks in Hillsdale County.



The quality of parks in Hillsdale County (356 respondents – 6.97 average)

One quarter of respondents (25.0%) indicated a rating of “8” when asked to rate their satisfaction with the quality of parks, while 16.5% of respondents stated a rating of “7.” Forty-four respondents (11.0%) were unsure or provided no answer.



Culture and Recreation - con't.

Chart 75

Quality of Parks

Demographic categories with significantly higher averages include: ZIP code 49242 (7.38), 8th grade education level (8.75), and primary ethnic background American Indian/Native American (8.50).

There are no demographic categories with significantly lower averages.

There was a strong correlation between responses to the statement “Rate your satisfaction with the quality of parks in Hillsdale County” and the statement “Rate your satisfaction with recreational activities in Hillsdale County.” The higher they rated satisfaction with the quality of parks in Hillsdale County, the more likely they were to highly rate satisfaction with recreational activities in Hillsdale County.

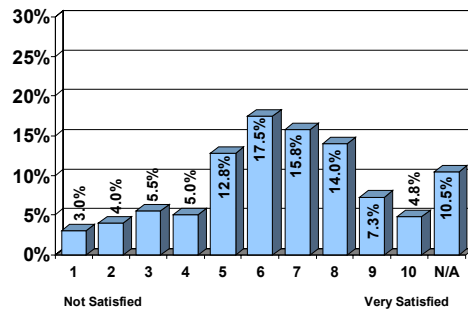
There was a strong correlation between responses to the statement “Rate your satisfaction with the quality of parks in Hillsdale County” and the statement “Rate your satisfaction with the quality of libraries in Hillsdale County.” The higher they rated satisfaction with the quality of parks in Hillsdale County, the more likely they were to highly rate satisfaction with the quality of libraries in Hillsdale County.



Culture and Recreation - con't.

Chart 76
Recreational Activities

Recreational activities in Hillsdale County (358 respondents – 6.16 average)



When asked to rate their satisfaction with the recreational activities in Hillsdale County, 17.5% of respondents indicated a rating of “6.” Almost sixteen percent (15.8%) of respondents rated their satisfaction a “7.” Forty-two respondents (10.5%) were unsure or provided no answer.

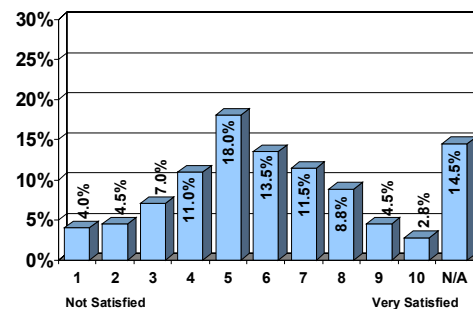
Demographic categories with significantly higher averages include: ZIP code 49271 (7.18), widowed (7.16), and high school graduate education level (6.63).

The only demographic category with a significantly lower average is: household income \$100,000 and above (3.33).

There was a strong correlation between responses to the statement “Rate your satisfaction with recreational activities in Hillsdale County” and the statement “Rate your satisfaction with the quality of parks in Hillsdale County.” The higher they rated satisfaction with recreational activities in Hillsdale County, the more likely they were to highly rate satisfaction with the quality of parks in Hillsdale County.

Cultural activities in Hillsdale County (342 respondents – 5.47 average)

Chart 77
Cultural Activities



Of the 400 respondents, 72 respondents (18.0%) rated their satisfaction with cultural activities as a “5,” followed by 13.5% for a rating of “6.” Only 2.8% of respondents were “very satisfied” with the cultural activities in Hillsdale County while 14.5% of respondents were unsure or provided no answer.

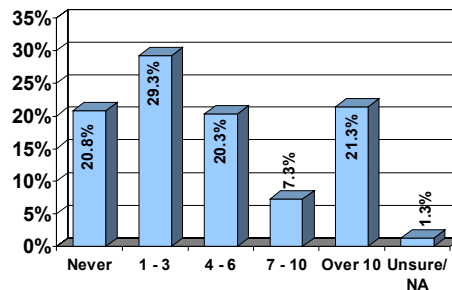


Demographic categories with significantly higher averages include: widowed (6.33), and age 65+ (6.45).

Demographic categories with significantly lower averages include: single respondents (4.82), divorced (4.47), non-homeowners (4.51), age 18-34 (5.05), age 35-44 (4.95), some high school education level (4.20), and household income level of \$100,000 and over (4.00).

There was no strong correlation between responses to this statement and other statements.

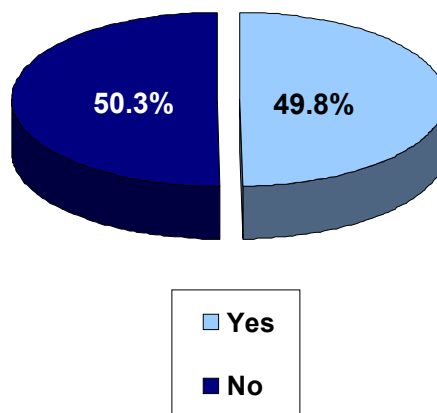
Respondents were asked to indicate how many times they visit county and city parks in their area. Almost thirty percent (29.3%) of respondents indicated that they visit county and city parks 1 to 3 times a year, followed by 21.3% of respondents who visit local parks over 10 times a year. Almost twenty-one percent (20.8%) of respondents never visit parks in their area.



Culture and Recreation - con't.

Chart 78
Visit County and City Parks

Respondents were asked, "Are you a member of, or involved with, a religious organization, religious group, church, synagogue, or mosque?" Almost half of the respondents (49.8%) stated that they are a member of a religious organization, while 50.3% indicated that they are not.



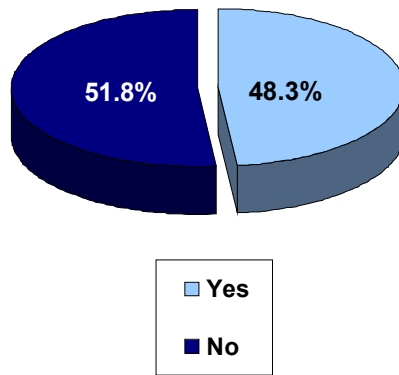
Community Involvement

Chart 79
Member of a Religious Organization



Community Involvement - con't.

Chart 80
Volunteered in Past Year



Respondents were asked, "Have you volunteered your time in the past year?" Just under half of the respondents (48.3%) have volunteered their time within the past year, while 51.8% of respondents have not.

Chart 81
Where Respondents Have Volunteered

Organizations	2005 % Respondents
Religious organization	53.9%
Schools	25.4%
Service organizations	15.0%
Red Cross	7.3%
Special Olympics	1.6%
Soup kitchen	1.0%
Other	31.6%
Unsure/NA	2.1%

*Chart totals more than 100% as respondents were able to indicate more than one response.

The 193 respondents who have volunteered their time in the past year were asked what type of organizations they have volunteered for. The most common response, named by 53.9% of respondents, was for a religious organization, church, synagogue, or mosque. Respondents have also volunteered their time with schools (25.4%), service organizations (15.0%), and the Red Cross (7.3%). Almost one-third of respondents (31.6%) named other organizations, which are listed below:

5 Respondents

Hospice

4 Respondents

Community

3 Respondents

American Cancer Society

Hospital

Political organization

Relay for Life



2 Respondents

*Habitat for Humanity
Individuals
Library
Veterans
Youth groups*

1 Respondent

*4H
Breast cancer foundation
Chamber of Commerce
Conservation services
Cystic Fibrosis
Fire department
Foster grandparents
Funerals
Goodwill
Health department
Hospital, Gideon's
Humane Society
Kappa Gamma
Kiwaniis
Legion
Make a Wish, Relay for Life, Toys for Tots, Charity Fund
Men's club
Mentoring
Neighborhood
Nursing home
Nursing home, hospital
Pro life group
Relay for Life, Humane Society
Salvation Army
Salvation Army, nursery
Senior Center
Theatre and medical facility
United Way, Relay for Life
Veterans, NRA
Work*





Based on the survey results obtained in this report, the following conclusions have been developed:

Top Issues. When asked to rate the quality of life in Hillsdale County, 70.8% of respondents rated it “good,” “very good,” or “excellent.” The results to this question were distributed in a bell curve shape, with the highest percentage of respondents in the “good” category at 43.5%. Residents who were not homeowners and those with a household income of under \$15,000 gave significantly lower ratings for the question

When asked the top three issues facing Hillsdale County residents, employment, schools/education, and roads were the top three issues named. When asked, “What do you think is the most significant issue facing *your* family?” the top responses were employment, taxes and finances. For both questions, employment appears to be an issue of concern both personally and for the community at large.

Services. Respondents were asked to rate five services on a scale from being “not satisfied” to “very satisfied.” The highest rated services were rescue and fire services, police services and snow removal. The lowest rated services were public transportation and the condition of roads. There were some differences in the ratings depending on the ZIP code of the respondent.

Crime & Substance Abuse. The seriousness of substance abuse in Hillsdale County was rated more of a problem than crime. In 2005, crime was rated 4.65 (on a 1 to 10 scale, where 1 indicates “not a serious problem” to 10 indicates “a very serious problem”), while drug or substance abuse received a 6.48 rating.

When asked about efforts to provide substance abuse care and services in Hillsdale County, over half of the respondents stated sufficient efforts were being made; however, nearly one out of every three people were unsure.



Conclusions - con't.

Family Issues. Respondents were asked to rate the seriousness of three family issues: parents not staying together, single parent households, and unwed pregnancies. All three received a similar rating between 6.23 and 6.45 on a 1 to 10 scale (where 1 indicates “not a serious problem” to 10 indicates “a very serious problem”). In addition, the ratings for all three issues all correlated with each other, suggesting that survey respondents felt the issues were similar in the level of seriousness.

Housing. Two statements on the survey asked respondents how satisfied they were with the quality of housing and the availability of affordable housing. The majority of respondents rated both of these statements as satisfied or very satisfied. Only 2.8% of respondents said they were not satisfied with the quality of housing, and 4.0% said they were not satisfied with the availability of affordable housing.

Health Care. Respondents were asked to rate four aspects of health care in Hillsdale County. For two of the four aspects: availability of health care services (6.90) and quality of health care services (6.83), the ratings were similar. Ratings for the cost of health care services (4.95) and availability of affordable health insurance (4.92) were significantly lower. The rating scale was 1 indicating “not satisfied at all” to 10 indicating “very satisfied,” so the lower the score, the less satisfied respondents were.

Most survey respondents (88.3%) have health coverage of some type, such as health insurance, prepaid plans, or government plans. Most respondents had no difficulty accessing basic health care, prescriptions, dental care, or mental health care. The most difficulty was in accessing prescriptions where 25 of the 400 respondents (6.3%) said they had difficulty, and most named cost or no insurance as the reason why.

Education. The 2005 Hillsdale Community Survey found that most respondents rated K-12 educational options, their local public school district, and the availability of higher education between 6.77 and 6.99 on a 1 to 10 scale, where 1 indicates “not satisfied at all” and 10 indicates “very satisfied.” There were some differences in ratings by ZIP codes, and household income levels.



Employment. Nearly eighty percent of the survey respondents who were employed worked in Hillsdale County, with about ten percent working in Jackson County. Sixteen percent of the respondents who were employed said they had changed jobs in the past three years, with the top reasons of moving, business closed or laid-off. Over half of the employed survey respondents said their employer provides some type of job related training, although fourteen percent were unsure.

Many of the respondents rated the availability of job or technical training and the availability of living wage jobs as not satisfied. Respondents least satisfied with the availability of living wage jobs were people who lived in ZIP code 49266, and with an associate's degree. Respondents least satisfied with the availability of job or technical training were people with an 8th grade education, and people with an associate's degree.

Eighty-five percent of the respondents said they knew how to access assistance in finding employment if they needed to, while only 38.9% of business managers or owners said they knew how to access assistance in finding employees.

Health. Most survey respondents have had a physical in the past two years. In 2005, 80.8% of the survey respondents had a complete physical within the past two years. Seventy-six percent of survey respondents said they have participated in a physical activity or exercise like running, calisthenics, golf, gardening or walking for exercise.

Culture and Recreation. Satisfaction ratings for the quality of libraries, quality of parks, and recreational activities were generally high from most respondents. The availability of cultural activities was rated at halfway between not satisfied and very satisfied. In 2005, 21.3% of survey respondents stated they visited county or city parks 10 or more times in the past year, while 20.8% of respondents did not visit any county or city park in the past year.

Volunteerism. The percentage of Hillsdale Community Survey respondents who have volunteered their time in the past year was 48.3%. The most often named organizations where respondents have volunteered were religious organizations, schools, and service organizations.





2005 Hillsdale Community Survey 75

Perspectives Consulting Group, Inc. 79





2005 Hillsdale Community Survey

Good Evening, my name is _____ from Perspectives Consulting Group, and we are talking with Hillsdale County residents to find out what you think about the quality of life in Hillsdale County. I won't ask for your name, address, or other personal information that can identify you.

Tel. Number: _____
 Interviewer: _____
 Date/Time: _____

Any information you give me will be confidential.

Final 5-22-05

Are you 18 years old or older? Yes - Continue No - May I speak to someone 18 or older please? (CODE: ADULT)
 Do you live in Hillsdale County? Yes - Continue No

1. How would you rate the quality of life in Hillsdale County? [1] Poor [2] Fair [3] Good [4] Very Good
(Read Choices) [5] Excellent [6] Unsure/NA

What do you think are the three most significant issues facing Hillsdale County residents? *(Do NOT read choices)* [1] Child abuse/neglect [2] Child care [3] Crime
[4] Employment [5] Health care [6] Housing
[7] Hunger [8] Mental health [9] Poverty
 2. Top Issue – Most Important: _____ [10] Schools/education [11] Senior citizens concerns
[12] Substance abuse [13] Teen pregnancy [14] Transportation
 3. Second Issue – Second Most Important: _____ [15] Violence/rape [16] Youth concerns
[17] Other _____
 4. Third Issue – Third Most Important: _____ [18] Unsure/NA

5. What do you think is the most significant issue facing your family? *(Do NOT read choices)* [1] Child abuse/neglect [2] Child care [3] Crime
[4] Employment [5] Health care [6] Housing
[7] Hunger [8] Mental health [9] Poverty
[10] Schools/education [11] Senior citizens concerns
[12] Substance abuse [13] Teen pregnancy
[14] Transportation [15] Violence/rape [16] Youth concerns
[17] Other _____
[18] Unsure/NA

On a scale from 1 to 10 with 1 being "not a serious problem" to 10 being "a very serious problem," how would you rate the following issues in Hillsdale County...

	1 - Not serious	10 - Very serious	11 - Unsure/NA
6. Crime	[1] [2] [3] [4] [5] [6] [7] [8] [9] [10] [11]		
7. Drug or substance abuse	[1] [2] [3] [4] [5] [6] [7] [8] [9] [10] [11]		
8. Parents not staying together	[1] [2] [3] [4] [5] [6] [7] [8] [9] [10] [11]		
9. Unwed pregnancies	[1] [2] [3] [4] [5] [6] [7] [8] [9] [10] [11]		
10. Single parent households	[1] [2] [3] [4] [5] [6] [7] [8] [9] [10] [11]		

On a scale from 1 to 10 with 1 being "not satisfied at all" to 10 being "very satisfied," how would you rate your satisfaction with...

	1 - Not satisfied at all	10 - Very satisfied	11 - Unsure/NA
11. Rescue and fire services in Hillsdale County	[1] [2] [3] [4] [5] [6] [7] [8] [9] [10] [11]		
12. Police services in Hillsdale County	[1] [2] [3] [4] [5] [6] [7] [8] [9] [10] [11]		
13. Condition of road surfaces in Hillsdale County	[1] [2] [3] [4] [5] [6] [7] [8] [9] [10] [11]		
15. Snow removal in Hillsdale County	[1] [2] [3] [4] [5] [6] [7] [8] [9] [10] [11]		
16. Public transportation in Hillsdale County	[1] [2] [3] [4] [5] [6] [7] [8] [9] [10] [11]		
17. The quality of parks in Hillsdale County	[1] [2] [3] [4] [5] [6] [7] [8] [9] [10] [11]		
18. Recreational activities in Hillsdale County	[1] [2] [3] [4] [5] [6] [7] [8] [9] [10] [11]		
19. The quality of libraries in Hillsdale County	[1] [2] [3] [4] [5] [6] [7] [8] [9] [10] [11]		
20. Cultural activities in Hillsdale County (Ex. Music, theatre, arts)	[1] [2] [3] [4] [5] [6] [7] [8] [9] [10] [11]		
21. Availability of health care services in Hillsdale County	[1] [2] [3] [4] [5] [6] [7] [8] [9] [10] [11]		
22. Quality of health care services in Hillsdale County	[1] [2] [3] [4] [5] [6] [7] [8] [9] [10] [11]		
23. Cost of health care services in Hillsdale County	[1] [2] [3] [4] [5] [6] [7] [8] [9] [10] [11]		
24. Availability of affordable health insurance	[1] [2] [3] [4] [5] [6] [7] [8] [9] [10] [11]		
25. Do you have any kind of health coverage, including health insurance, prepaid plans such as HMOs, or government plans such as Medicare?	[1] Yes [2] No [3] Unsure/NA		

Do you have any difficulty accessing health services such as:

26. Basic Health Care	[1] Yes , why _____ [2] No [3] Unsure/NA
27. Prescriptions	[1] Yes , why _____ [2] No [3] Unsure/NA
28. Dental Care	[1] Yes , why _____ [2] No [3] Unsure/NA
29. Mental Health Care	[1] Yes , why _____ [2] No [3] Unsure/NA

30. Substance Abuse Treatment Service	[1] Yes , why _____ [2] No [3] Unsure/NA
31. Do you feel employers in Hillsdale County are sensitive to family needs?	[1] Yes [2] No, why _____ [3] Unsure/NA
31A. Do you know how to access assistance in finding employment if you needed to?	[1] Yes [2] No [3] Unsure/NA
31B. Do you own or manage a business? If so, do you know how to access assistance in finding employees?	[1] Do not own or manage a business [2] Yes [3] No [4] Unsure/NA
32. Do you feel sufficient efforts are being made in Hillsdale County to provide substance abuse care and services?	[1] Yes, efforts are sufficient [2] No, efforts are not sufficient because _____ [3] Unsure
33. Do you feel sufficient efforts are being made in Hillsdale County to provide mental health care and services?	[1] Yes, efforts are sufficient [2] No, efforts are not sufficient because _____ [3] Unsure
34. Who would you turn to for help with a substance abuse or mental health concern or need? (Do NOT read choices/ Please check all that apply)	[1] Crisis Line/211 [2] Internet/web site [3] Family member [4] Friends/relatives/co-workers [5] Mental Health Clinic/Agency [6] Physician [7] Pastor/Clergy [8] Psychologist/Psychiatrist [9] School Counselor [10] Substance Abuse Clinic/Agency [11] Other _____ [12] Unsure

On a scale from 1 to 10 with 1 being "not satisfied at all" to 10 being "very satisfied," how would you rate your satisfaction with...	1 - Not satisfied at all	10 - Very satisfied	11 - Unsure/NA
35. Your local public school district	[1]	[2] [3] [4] [5] [6] [7] [8] [9] [10]	[11]
36. Number of K-12 educational options in your community	[1]	[2] [3] [4] [5] [6] [7] [8] [9] [10]	[11]
37. Availability of higher education in Hillsdale County	[1]	[2] [3] [4] [5] [6] [7] [8] [9] [10]	[11]
38. Availability of jobs that pay a sufficient wage to support the basic needs of a worker and their dependents in Hillsdale County	[1]	[2] [3] [4] [5] [6] [7] [8] [9] [10]	[11]
39. Availability of job or technical training in Hillsdale County	[1]	[2] [3] [4] [5] [6] [7] [8] [9] [10]	[11]
40. Quality of housing in Hillsdale County	[1]	[2] [3] [4] [5] [6] [7] [8] [9] [10]	[11]
41. Availability of affordable housing to fit your needs	[1]	[2] [3] [4] [5] [6] [7] [8] [9] [10]	[11]
42. Do you think the cost of living in Hillsdale County is: (Read choices)	[1] Very low [2] Slightly low [3] Average [4] Slightly high [5] Very high [6] Unsure/NA		
43. What do you feel is the largest barrier to employment in Hillsdale County? (If necessary READ CHOICES, Check ONE)	[1] Basic literacy and education level [2] Child care [3] Health concerns [4] Job skills and training [5] Transportation [6] Other _____ [7] Unsure/NA [8] Lack of jobs		
44. Do you use child care regularly?	[1] Yes [2] No (Skip to question #49)	[3] Unsure/NA	

On a scale from 1 to 10, with 1 meaning "poor" and 10 meaning "excellent," how would you rate the...	1 - Poor	10 - Excellent	11 - Unsure/NA
45. Availability of open child care slots _____	[1]	[2] [3] [4] [5] [6] [7] [8] [9] [10]	[11]
46. Availability of day care (ex., hours of operation and location)	[1]	[2] [3] [4] [5] [6] [7] [8] [9] [10]	[11]
47. Affordability of day care in Hillsdale County _____	[1]	[2] [3] [4] [5] [6] [7] [8] [9] [10]	[11]
48. Overall quality of child care in Hillsdale County _____	[1]	[2] [3] [4] [5] [6] [7] [8] [9] [10]	[11]
Are you a member of, or involved with, any of the following groups or organizations:			
49. Religious organization, religious group, church, synagogue, or mosque	[1] Yes [2] No [3] Unsure/NA		
52. Have you volunteered your time in the past year?	[1] Yes [2] No (Skip to Q#55)	[3] Unsure/NA (Skip to Q#55)	
53. For which types of organizations have you volunteered? (Do NOT read choices/Check all that apply)	[1] Religious Org, religious group, church, synagogue, or mosque [2] Red Cross [3] Service organizations [4] Soup Kitchen [5] Schools [6] Special Olympics [7] Other _____ [8] Unsure/NA		
55. How often do you visit county and city parks in your area? (Read choices)	[1] Never [2] 1 to 3 times/ year [3] 4 to 6 times/ year [4] 7 to 10 times/ year [5] Over 10 times/ year [6] Unsure/NA		
56. Would you say your general health is: (Read choices)	[1] Poor [2] Fair [3] Good [4] Very Good [5] Excellent [6] Unsure/NA		
57. During the past month, other than your regular job, did you participate in any physical activities or exercises such as running, calisthenics, golf, gardening, or walking for exercise?	[1] Yes [2] No [3] Don't know/Not sure [4] Refused/NA		
58. When was the last time you had a complete physical? (Read choices)	[1] Never [2] Over two years ago [3] Within the last two years [4] Within the last year [5] Very recently (last month or two) [6] Unsure/NA		

60. Do you currently smoke cigarettes every day, some days, or not at all?	[1] Every day [2] Some days [3] Not at all [4] Refused/NA
61. Considering all types of alcoholic beverages, how many times during the past 30 days did you have five or more drinks?	[1] None [2] Number of times _____ [3] Unsure/NA
For statistical purposes only:	
62. How long have you lived in Hillsdale County?	[1] Less than 1 year [2] 1to 3 years [3] 4 to 6 years [4] 7 to10 years [5] 11to 20 years [6] More than 21years [7]Unsure
63. What is your ZIP code?	[1] Refused/NA [2] Other _____
63A. What school district do you live in?	[1] Refused/NA [2]Other, list district _____
64. Are you single, married, widowed, divorced or separated?	[1] Single [2] Married [3] Widowed [4] Divorced [5] Separated [6] Refused/NA
65. Is your home owned by you or a member of your household?	[1] Yes [2] No [3] Unsure/NA
66. How many children do you have under the age of 18?	_____
67. Is your age... (Read choices)	[1] 18-34 [2] 35-44 [3] 45-64 [4] 65+ [5] Unsure/NA
68. What is the highest level of education you have completed?	[1] 8 th grade [2] Some high school [3] High school graduate [4] Some college, no degree [5] Associate's degree [6] Bachelor's degree [7] Post graduate study, but no degree [8] Graduate or professional degree [9] Other _____ [10] Unsure/NA
69. What is your current employment status? (Read choices if necessary)	[1] Currently employed full-time [2] Currently employed part-time [3] Homemaker – Skip to Q 72 [4] Retired – Skip to Q 72 [5] Student – Skip to Q 72 [6] Unemployed, but seeking work – Skip to Q 72 [7] Unemployed, not seeking work – Skip to question 72 [8] Unsure/NA
70. If employed, what county do you work in?	[1] Jackson County [2] Washtenaw County (Ann Arbor Area) [3] Calhoun County [4] Hillsdale County -Skip to Q71A [5] Ingham County [6] Other _____ [7] Refused/NA–Skip to Q71A [8] Monroe County [9] Branch County [10]Lenawee County [11] Eaton County [12] Ohio
71. If working outside of Hillsdale County, what is your job title and responsibilities?	[1] _____ [2] Refused/NA
71A. Have you changed jobs or employment in the past three years?	[1] Yes, changed jobs - WHY? _____ [2] No did not change jobs [3] Refused/NA
71B. Does your employer provide job related training	[1] Yes, what type of training _____ [2] No training provided [3] Unsure/NA
72. What is your primary ethnic background? (If they hesitate, read choices)	[1] White/Caucasian [2] African American/Black [3] Hispanic [4] Asian or Pacific Islander [5] American Indian/Native American [6] Other _____ [7] Unsure/NA
73. What range best represents your total household income? (Read choices)	[1] Less than \$15,000 [2] \$15,000 - \$24,999 [3] \$25,000 - \$34,999 [4] \$35,000 - \$49,999 [5] \$50,000 - \$74,999 [6] \$75,000 - \$99,999 [7] \$100,000 and over [8] Refused/NA

Thank you for participating in this survey. We appreciate the time you have taken to give us your opinion on the quality of life in Hillsdale County.

76. Gender Determine by voice:	[1] Male [2] Female
--------------------------------	-------------------------



Founded in 1987, Perspectives Consulting Group, Inc. provides market research and strategic planning services to businesses and organizations throughout the United States. Using state-of-the-art market research techniques including focus groups, telephone/mail surveys, interviews and customer response systems, Perspectives Consulting Group, Inc. obtains the information necessary to make efficient and effective decisions and plan for the future. Perspectives Consulting Group, Inc. offers a full-range of planning services including strategic planning and feasibility studies that are essential to succeed in today's marketplace. Our primary focus is meeting the needs of nonprofit organizations, educational institutions, governmental agencies, religious organizations, and United Ways.



We firmly believe and practice the following guiding philosophies:

- To provide the client with what they need, when they need it.
- To follow the simple process of listening, planning, researching, analyzing, evaluating and reporting for each client and project.
- To treat each client's situation as unique and individual, providing the best combination of services to meet the client's needs.
- To maintain a state of involvement that allows clear, unbiased, objectivity that insures and protects the confidentiality of the client's situation.

For more information, contact us at:

Perspectives Consulting Group Inc.
P.O. Box 496
Paw Paw, MI 49079
Phone: (269) 657-5400 / (800) 724-9994
Fax: (269) 657-0500
info@perspec.com
www.perspec.com



