

MICHIGAN DEPT. OF LABOR & ECON. GROWTH/LABOR MARKET ANALYSIS - SOUTH CENTRAL MICHIGAN
CIVILIAN LABOR FORCE ESTIMATES
By Place of Residence/Seasonally Unadjusted. September, 2008 **

Areas	CIVILIAN LABOR FORCE					EMPLOYMENT					UNEMPLOYMENT RATES		
	Sept. 2008	August 2008	Sept. 2007	Monthly Change	Annual Change	Sept. 2008	August 2008	Sept. 2007	Monthly Change	Annual Change	Sept 08	Aug. 08	Sept 07
Jackson MSA	74,400	75,300	76,600	-900	-2,200	67,500	68,400	70,900	-900	-3,400	9.3	9.2	7.4
Hillsdale Co.	21,400	21,650	21,825	-250	-425	19,150	19,325	20,025	-175	-875	10.6	10.6	8.3
Lenawee Co.	49,150	49,475	50,400	-325	-1,250	44,150	44,350	46,750	-200	-2,600	10.2	10.4	7.3
Michigan	4,918,000	4,984,000	5,009,000	-66,000	-91,000	4,512,000	4,563,000	4,661,000	-51,000	149,000	8.3	8.4	6.9
U.S.A.*	154,509	155,387	153,400	-878	1,109	145,310	145,909	146,448	-599	-1,138	6.0	6.1	4.5

* Expressed in thousands; ** All labor force and employment numbers are rounded to the nearest 25 for counties, 100 for MSAs, and 1,000 for the State and the U.S.

September Jobless Rates Up Slightly from August Levels in Almost All Regional Counties

Jobless rates inched up in almost all regional counties in September: seasonal job gains in the private and public education sectors were more than offset by employment declines in construction and leisure and hospitality. Unemployment fell in Cass and Lenawee counties.

Labor Force Down Over the Month and Over the Year

Labor force was down over the month in all regional counties as young people continued to leave the workforce to return to school. Labor force declines ranged from -225 in Barry and Van Buren counties to -1,025 in Kalamazoo County.

Over the year, labor force fell in all regional counties, ranging from -25 in Branch to -3,200 in Kalamazoo County.

Employment by Place of Residence Down Over the Month and Over the Year

Over the month, employment by place of residence declined in all regional counties. In September, private and public education institutions pumped up staffing. However, employment in construction and leisure and hospitality has fallen more than usual due to troubles in the housing sector and due to the secondary impact of manufacturing cuts. Jobs also fell in the farming sector as the harvesting season winds down. Employment reductions in September ranged from -175 in Hillsdale to -1,450 in St. Joseph County.

Over the year, employment was down in all regional counties, ranging from -575 in Branch to -5,250 in Kalamazoo County.

Jobless Rates Mostly Up Over the Month and Over the Year

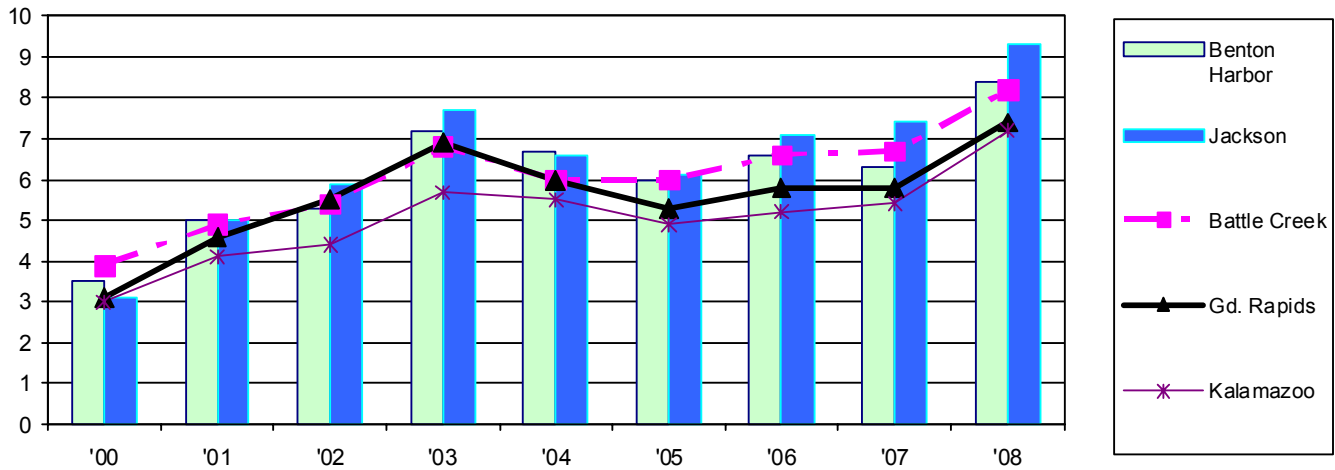
Unemployment rates inched up over the month in almost all regional counties. Jobless rates in Southwest Michigan counties rose by an average of two tenths of a percentage point in September. Rates edged down in Cass and Lenawee counties, and Hillsdale County remained unchanged at 10.6 percent. Half of the regional counties recorded lower rates than the statewide rate of 8.3 percent in September (Cass, Barry, Kalamazoo, Allegan, Van Buren, and Calhoun). The remaining counties registered higher jobless rates than the state.

Over the year, unemployment rates were up in all regional counties. St. Joseph County recorded the highest jobless rate increase over the year (+3.4 percentage points).

Local MSAs September Unemployment Rates Since 2000

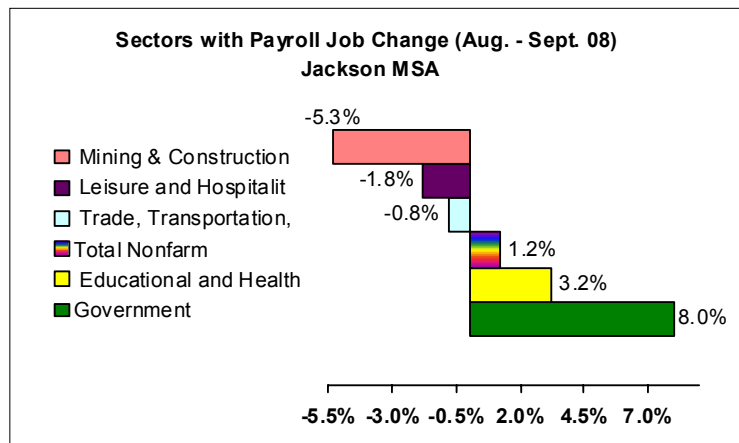
Year	00	01	02	03	04	05	06	07	08
Jackson	3.1	5.0	5.9	7.7	6.6	6.1	7.1	7.4	9.3

Comparing the Trend of Local MSAs' September Unemployment Rates Since 2000



Payroll jobs in the Jackson MSA (Jackson County) were estimated at 57,200 in September (up 700 from August). Jackson gained 1,000 jobs in private and public education, but recorded 100 fewer positions each in construction, retail trade, and leisure and hospitality.

Compared to September 2007, payroll job levels in most industries either declined or remained unchanged. Only educational and health services edged up by 100 jobs. Manufacturing lost 200 jobs. Employment in the construction sector was also down by 200 over the year. Overall payroll employment in Jackson was 900 below last year's level in September.





**SOUTH CENTRAL MICHIGAN
WORKS!**

310 W. Bacon Street, Hillsdale, MI 49242
517-437-0990 Fax 517-439-4388

Jackson MSA							
	September 2008	August 2008	September 2007	Monthly Change	Monthly % Change	Annual Change	Annual % Change
Total Nonfarm	57,200	56,500	58,100	700	1.2%	-900	-1.5%
Nat. Res. & Construction	1,800	1,900	2,000	-100	-5.3%	-200	-10.0%
Manufacturing	9,000	9,000	9,200	0	0.0%	-200	-2.2%
Trade, Transportation, Utilities	12,100	12,200	12,300	-100	-0.8%	-200	-1.6%
Information	500	500	500	0	0.0%	0	0.0%
Financial Activities	1,900	1,900	1,900	0	0.0%	0	0.0%
Professional and Business	4,700	4,700	4,700	0	0.0%	0	0.0%
Educational and Health	9,600	9,300	9,500	300	3.2%	100	1.1%
Leisure and Hospitality	5,400	5,500	5,600	-100	-1.8%	-200	-3.6%
Other Services	2,800	2,800	2,800	0	0.0%	0	0.0%
Government	9,400	8,700	9,600	700	8.0%	-200	-2.1%

South Central Michigan Works! Agency Local Area Employment Data - 2008

	January	February	March	April	May	June	July	August	September	October	November	December	Ann Avg
South Central Michigan													
Labor force	148,375	148,650	149,025	147,800	149,525	149,925	149,325	146,425	145,000				148,225
Employment	135,525	135,675	136,225	137,075	136,125	136,275	133,425	132,075	130,825				134,800
Unemployed	12,850	12,975	12,800	10,725	13,400	13,650	15,925	14,350	14,175				13,425
Rate	8.7	8.7	8.6	7.3	9.0	9.1	10.7	9.8	9.8				9.1
Hillsdale													
Labor force	22,000	21,850	21,950	21,775	22,175	22,150	22,175	21,650	21,400				21,900
Employment	19,875	19,800	19,950	20,050	20,025	19,975	19,350	19,325	19,150				19,725
Unemployed	2,125	2,050	2,000	1,700	2,150	2,175	2,825	2,300	2,250				2,175
Rate	9.6	9.4	9.1	7.9	9.7	9.8	12.7	10.6	10.6				9.9
Jackson													
Labor force	76,100	76,500	76,600	75,800	76,900	77,000	76,800	75,300	74,400				76,200
Employment	70,000	70,200	70,600	70,900	70,500	70,300	69,400	68,400	67,500				69,800
Unemployed	6,100	6,300	6,100	5,000	6,400	6,700	7,400	6,900	6,900				6,400
Rate	8.0	8.3	7.9	6.5	8.3	8.6	9.7	9.2	9.3				8.4
Lenawee													
Labor force	50,250	50,325	50,450	50,200	50,475	50,800	50,350	49,475	49,150				50,175
Employment	45,600	45,725	45,700	46,150	45,575	45,975	44,675	44,350	44,150				45,325
Unemployed	4,650	4,600	4,750	4,050	4,900	4,825	5,675	5,125	5,000				4,850
Rate	9.2	9.2	9.4	8.1	9.7	9.5	11.3	10.4	10.2				9.7