

MICHIGAN DEPT. OF ENERGY, LABOR & ECON. GROWTH/LABOR MARKET ANALYSIS - SOUTH CENTRAL MICHIGAN  
CIVILIAN LABOR FORCE ESTIMATES  
By Place of Residence/Seasonally Unadjusted. November, 2009 \*\*

Areas	CIVILIAN LABOR FORCE					EMPLOYMENT					UNEMPLOYMENT RATES		
	Nov. 2009	Oct. 2009	Nov. 2008	Monthly Change	Annual Change	Nov. 2009	Oct. 2009	Nov. 2008	Monthly Change	Annual Change	Nov 09	Oct 09	Nov 08
Jackson MSA	75,400	74,800	75,800	600	-400	64,400	64,000	68,600	400	-4,200	14.7	14.5	9.5
Hillsdale Co.	21,025	20,975	21,175	50	-150	17,525	17,450	18,700	75	-1,175	16.6	16.8	11.8
Lenawee Co.	48,325	47,950	48,200	375	125	40,725	40,600	43,175	125	-2,450	15.7	15.3	10.5
Michigan	4,847,000	4,847,000	4,890,000	0	-43,000	4,164,000	4,153,000	4,437,000	11,000	-273,000	14.1	14.3	9.3
U.S.A.*	153,539	153,635	154,624	-96	-1,085	139,132	139,088	144,609	44	-5,477	9.4	9.5	6.5

\* Expressed in thousands; \*\* All labor force and employment numbers are rounded to the nearest 25 for counties, 100 for MSAs, and 1,000 for the State and the U.S.

## November Jobless Rates Stable in All Regional Counties

The number of jobseekers in November slightly exceeded the number of available jobs, resulting in small increases in jobless rates for almost all area counties. Unemployment rates edged up in November by an average of a quarter of a percentage point. Seasonal job gains were recorded in the retail sector but were more than offset by seasonal job cuts in leisure and hospitality.

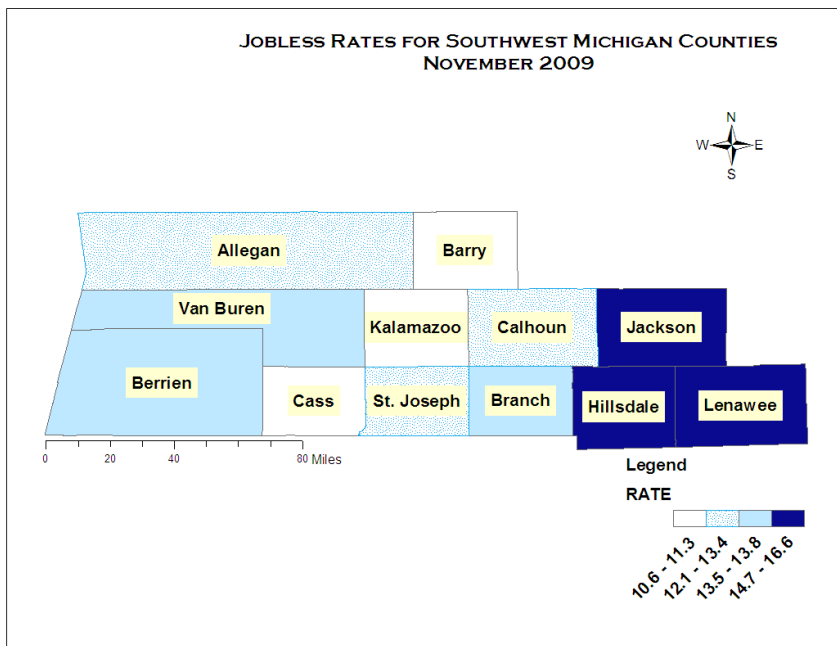
### Labor Force Up Over the Month but Mostly Down Over the Year

Labor force rose over the month in all regional counties, ranging from +50 in Hillsdale County to +1,025 in Kalamazoo County. Over the year, labor force declined in almost all regional counties, with the exception of Branch (+50) and Lenawee (+125) counties. Labor force declines over the year ranged from -150 in Hillsdale to -1,300 in Kalamazoo and Berrien counties.

### Employment Mostly Up Over the Month but Substantially Down Over the Year in All Counties

November employment by place of residence edged up seasonally in almost all regional counties by an average of 0.4 percent. Employment slightly declined in Allegan County (-50), and remained flat in Branch County. Job gains ranged from +25 in Berrien to +850 in Kalamazoo County. Seasonal payroll job additions (mostly in retail trade) were more than offset by employment declines in leisure and hospitality.

Over the year, employment fell sharply in all area counties, ranging from -775 in Branch to -6,400 in Kalamazoo County. The average rate of employment decline over the year in November was approximately 5.5 percent.



### Jobless Rates Stable over the Month but Substantially Up over the Year

November unemployment rates inched up in almost all area counties, with the exception of Hillsdale (-0.2) and St. Joseph (-0.1) counties. Nine regional counties recorded lower rates than the statewide rate of 14.1 percent in November (Barry, Kalamazoo, Cass, Calhoun, St. Joseph, Allegan, Berrien, Branch, and Van Buren). The remaining three regional counties (Jackson, Lenawee, and Hillsdale) registered higher jobless rates than the state.

Compared to last year in November, jobless rates climbed by an average of 4.2 percentage points. Jackson and Lenawee counties recorded the highest jobless rate increases over the year (+5.2 percentage points), followed by Allegan County (+5.0).

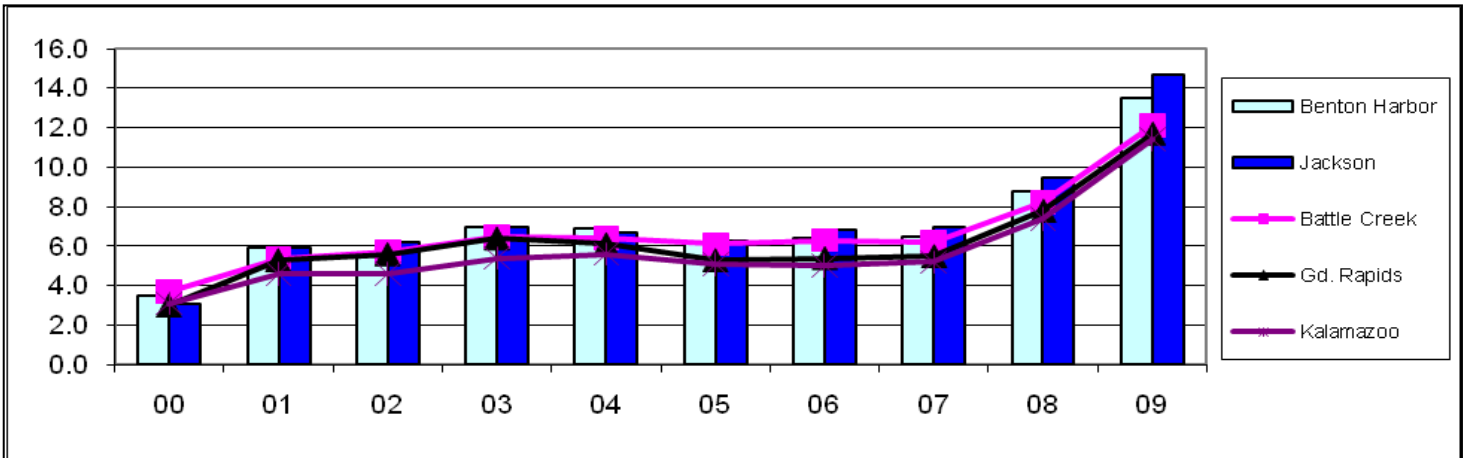
**Local Metro Area November Unemployment Rates Since 2000**

Since 2000, jobless rates have escalated in the Jackson (+11.6 percentage points), Niles-Benton Harbor (+10.0), Grand Rapids (+8.7), Battle Creek (+8.4), and Kalamazoo (+8.3) metro areas.

Year \ Areas	00	01	02	03	04	05	06	07	08	09
Jackson	3.1	5.9	6.2	7.0	6.7	6.3	6.8	7.0	9.5	14.7

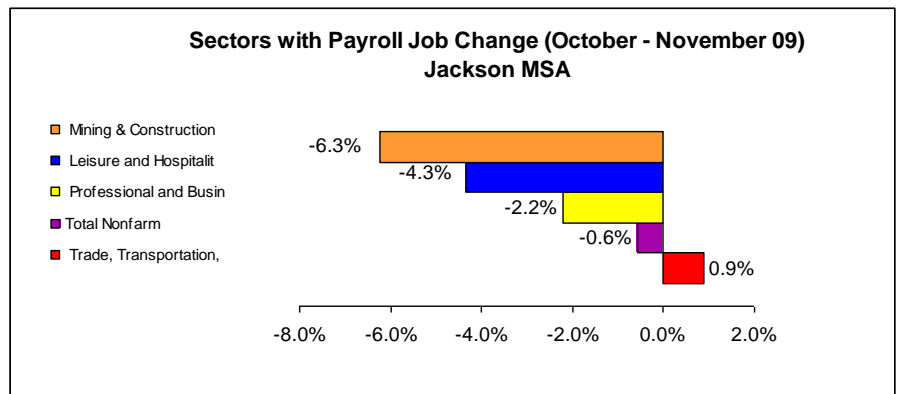
November unemployment rates increased from 2000 to 2003; fell in 2004-05; remained flat in 2006-07; rose again in 2008, and then jumped sharply in 2009, primarily due to massive layoffs in the auto industry. The current year continues to set record high unemployment rates since the early 1980s.

**Comparing the Trend of Local MSAs' November Unemployment Rates Since 2000**



Payroll jobs in the **Jackson MSA** (Jackson County) were estimated at 53,800 in November (down 300 from October). The area gained only 100 jobs in retail trade but lost a total of 400 jobs seasonally in construction (-100), professional and business services (-100), and leisure and hospitality (-200).

Compared to November 2008, payroll job levels in most industries either declined or remained unchanged. Manufacturing employment plummeted by 1,300 over the year. Leisure and hospitality and retail trade each lost 500 jobs, while professional and business services and construction each cut 400 jobs over the year. Overall payroll employment in Jackson was 3,200 (or -5.6%) below last year's November level.





310 W. Bacon Street, Hillsdale, MI 49242  
517-437-0990 [www.scmw.org](http://www.scmw.org)



### South Central Michigan MSA Payroll Employment - November 2009

Jackson MSA	November 2009	October 2009	November 2008	Monthly Change	Monthly % Change	Annual Change	Annual % Change
<b>Total Nonfarm</b>	<b>53,800</b>	<b>54,100</b>	<b>57,000</b>	<b>-300</b>	<b>-0.6%</b>	<b>-3,200</b>	<b>-5.6%</b>
Mining, Logging, and Construction	1,500	1,600	1,900	-100	-6.3%	-400	-21.1%
Manufacturing	7,700	7,700	9,000	0	0.0%	-1,300	-14.4%
Trade, Transportation, Utilities	11,300	11,200	12,000	100	0.9%	-700	-5.8%
Information	500	500	500	0	0.0%	0	0.0%
Financial Activities	1,800	1,800	1,900	0	0.0%	-100	-5.3%
Professional and Business	4,400	4,500	4,800	-100	-2.2%	-400	-8.3%
Educational and Health	9,700	9,700	9,800	0	0.0%	-100	-1.0%
Leisure and Hospitality	4,400	4,600	4,900	-200	-4.3%	-500	-10.2%
Other Services	2,800	2,800	2,800	0	0.0%	0	0.0%
Government	9,700	9,700	9,400	0	0.0%	300	3.2%

#### South Central Michigan Works! Agency Local Area Employment Data - 2009

	January	February	March	April	May	June	July	August	September	October	November	December	Ann Avg
<b>South Central Michigan</b>													
Labor force	143,925	143,775	144,025	142,700	144,475	148,250	146,650	143,975	142,500	143,700	144,775		144,425
Employment	123,975	123,550	122,800	122,700	121,875	123,050	121,300	121,050	120,250	122,000	122,625		122,300
Unemployed	19,925	20,225	21,225	20,000	22,575	25,175	25,350	22,925	22,250	21,675	22,150		22,150
Rate	13.8	14.1	14.7	14.0	15.6	17.0	17.3	15.9	15.6	15.1	15.3		15.3
<b>Hillsdale</b>													
Labor force	21,275	21,125	21,425	21,100	21,475	22,175	21,750	21,300	20,900	20,975	21,025		21,325
Employment	17,600	17,550	17,575	17,625	17,500	17,775	17,400	17,525	17,325	17,450	17,525		17,525
Unemployed	3,675	3,575	3,875	3,475	3,975	4,400	4,350	3,800	3,575	3,525	3,475		3,800
Rate	17.3	17.0	18.0	16.4	18.5	19.9	20.0	17.8	17.1	16.8	16.6		17.8
<b>Jackson</b>													
Labor force	74,400	74,500	74,400	73,600	74,700	76,300	76,200	75,000	74,000	74,800	75,400		74,800
Employment	65,400	65,100	64,500	64,200	64,100	64,500	64,000	63,700	62,900	64,000	64,400		64,300
Unemployed	9,000	9,400	10,000	9,400	10,600	11,800	12,200	11,300	11,000	10,800	11,000		10,600
Rate	12.1	12.7	13.4	12.7	14.1	15.5	16.0	15.1	14.9	14.5	14.7		14.1
<b>Lenawee</b>													
Labor force	48,275	48,150	48,175	48,025	48,300	49,775	48,725	47,650	47,625	47,950	48,325		48,275
Employment	40,975	40,950	40,775	40,850	40,250	40,825	39,875	39,825	40,000	40,600	40,725		40,500
Unemployed	7,300	7,200	7,425	7,175	8,050	8,925	8,850	7,825	7,650	7,350	7,600		7,750
Rate	15.1	15.0	15.4	14.9	16.7	18.0	18.2	16.4	16.0	15.3	15.7		16.1