

Index of Charts	3
Executive Summary	5
Introduction	9
Survey Methodology	
Survey Instrument	11
Survey Execution	11
Research Results	
Respondent Profile	13
Top Issues Facing Lenawee County	18
Lenawee County Services	22
Crime and Substance Abuse	26
Family Issues	30
Child Care	33
Housing	37
Health Care	39
Education	47
Employment	50
Personal Health	59
Culture and Recreation	61
Community Involvement	64
Conclusions	67
Appendices	71
2005 Lenawee Community Survey	73
Perspectives Consulting Group, Inc.	77





1)	Gender of Respondent.....	13
2)	Age of Respondent.....	13
3)	Household Income of Respondent	13
4)	Ethnic Background of Respondent	14
5)	Lived in the Area	14
6)	ZIP Code of Respondent.....	15
7)	School District of Respondent	16
8)	Marital Status of Respondents	17
9)	Have Children Under 18	17
10)	Education Level of Respondent	17
11)	Employment Status of Respondent	18
12)	Quality of Life in Lenawee County.....	18
13)	Top Three Issues Facing Lenawee County	19
14)	Most Important Issue to Their Family	21
15)	Average Ratings – Lenawee County Services.....	22
16)	Rescue and Fire Services.....	22
17)	Police Services.....	23
18)	Snow Removal.....	24
19)	Public Transportation	25
20)	Condition of Road Surfaces	25
21)	Average Ratings – Crime and Substance Abuse	26
22)	Drug or Substance Abuse	26
23)	Crime	27
24)	Difficulty Accessing Substance Abuse Treatment Services.....	28
25)	Efforts to Provide Substance Abuse Care and Services ...	28
26)	Average Ratings – Family Issues	30
27)	Parents Not Staying Together	30
28)	Single Parent Households	31
29)	Unwed Pregnancies	32
30)	Use Child Care Regularly	33
31)	Average Ratings – Child Care	33
32)	Overall Quality of Child Care	33
33)	Availability of Open Care Child Slots	34
34)	Availability of Day Care	35
35)	Affordability of Day Care	36
36)	Home Owner	37
37)	Average Ratings – Housing	37
38)	Quality of Housing	38
39)	Availability of Affordable Housing	38
40)	Cost of Living in Lenawee County	39
41)	Average Ratings – Health Care	39



**Table of Charts -
con't.**

42)	Availability of Health Care Services	40
43)	Quality of Health Care Services	40
44)	Availability of Affordable Health Insurance	41
45)	Cost of Health Care Services	42
46)	Have Health Coverage	42
47)	Difficulty Accessing Basic Health Care	43
48)	Difficulty Accessing Prescriptions	43
49)	Difficulty Accessing Dental Care	44
50)	Difficulty Accessing Mental Health Care	45
51)	Efforts to Provide Mental Health Care	45
52)	Turn to for Help	46
53)	Average Ratings – Education	47
54)	Local Public School District	47
55)	Availability of Higher Education	48
56)	Number of K-12 Educational Options	49
57)	County of Employment	50
58)	Changed Jobs or Employment in Past Three Years	51
59)	Employer Provides Job Related Training	52
60)	Employers Sensitive to Family Needs	54
61)	Average Ratings – Employment	55
62)	Availability of Job or Technical Training	55
63)	Availability of Living Wage Jobs	56
64)	Barriers to Employment	57
65)	Access Assistance in Finding Employment	57
66)	Own or Manage a Business	58
67)	Access Assistance in Finding Employees	58
68)	General Health of Respondent	59
69)	Exercise or Physical Activity	59
70)	Last Complete Physical	59
71)	Smoke Cigarettes	60
72)	Five or More Drinks in Past 30 Days	60
73)	Average Ratings – Culture and Recreation	61
74)	Quality of Libraries	61
75)	Quality of Parks	62
76)	Recreational Activities	62
77)	Cultural Activities	63
78)	Visit County and City Parks	64
79)	Member of a Religious Organization	64
80)	Volunteered in Past Year	64
81)	Where Respondents Have Volunteered	65



Four-hundred residents of Lenawee County were randomly selected to participate in a survey in June of 2005. Each respondent was asked 76 questions about issues in Lenawee County.

- Of the 400 respondents, 50.0% were male and 50.0% were female and 32.0% of respondents were in the 45-64 age category, while 29.5% were in the 18-34 age category.
- The largest category of respondents (20.8%) indicated a household income of \$50,000 to \$74,999.
- Over ninety percent (91.3%) of respondents named White/Caucasian as their primary ethnic background.
- The most frequent response for how long the respondent has lived in Lenawee County was more than 21 years (54.5%), followed by 11 to 20 years (21.5%).
- The majority of respondents, 70.0%, have no children under the age of 18.
- Over forty-eight percent (48.3%) of respondents indicated that they have graduated from high school and twenty-four percent (16.8%) of respondents have attended college but do not have a degree.
- Over forty-four (44.8%) percent of respondents indicated that they are currently employed full-time, while 7.3% of respondents are currently employed part-time.
- Forty-five percent (45.0%) of respondents stated that the quality of life in Lenawee County was “good,” followed by 29.8% of respondents who said it was “very good.”
- When asked to rate the top three issues facing Lenawee County residents, employment was the top issue named by 36.0% of respondents.
- Respondents were asked to state the most significant issue facing their own family and employment was the top issue named by 10.0% of respondents, while schools/education was rated the top issue by 7.0% of respondents.



Executive Summary - con't.

- From highest to lowest, service ratings in Lenawee were: rescue and fire services, police services, snow removal, public transportation, and condition of road surfaces.
- Almost seventeen percent (16.3%) of respondents rated the issue of drug or substance abuse a "5," while 15.5% rated it a "7," on a scale of 1 to 10, where "10" is a serious problem.
- Crime received a "5" rating by 21.3% of respondents.
- Of the 400 respondents, 91.8% do not have difficulty accessing substance abuse treatment services.
- Almost two-thirds (63.8%) of respondents indicated that they feel sufficient efforts are being made in Lenawee County to provide substance abuse care and services.
- From highest to lowest, family issues ratings were: parents not staying together, single parent households, and unwed pregnancies.
- Just under seven percent (6.8%) of respondents indicated that they use child care regularly.
- From highest to lowest, child care ratings were: overall quality of child care, availability of open child care slots, availability of day care, and affordability of day care.
- Over eighty percent (88.0%) of the respondents own a home.
- Thirty-one percent (31.0%) of respondents rated their satisfaction with the quality of housing in Lenawee County an "8," on a scale of 1 to 10, where "10" is very satisfied.
- Over half of the respondents (59.5%) rated their satisfaction with affordable housing to fit their needs a "6," "7," or "8."
- Over fifty-six percent (56.3%) of respondents stated that the cost of living in Lenawee County is average, while 26.8% of respondents felt it was slightly high.
- From highest to lowest, health care ratings were: availability of health care services, quality of health care services, availability of affordable health insurance, and cost of health care services.



- A large majority of respondents, 94.0%, have some type of health coverage.
- Over ninety-six percent (96.3%) of respondents indicated that they do not have any difficulty accessing basic health care.
- Of the 400 respondents, 92.5% do not have difficulty accessing dental care.
- Over ninety percent (96.3%) indicated that they do not have difficulty accessing mental health care.
- Almost two-thirds (62.5%) of respondents feel that sufficient efforts are being made to provide mental health care and services.
- Nearly half (45.8%) of respondents would first turn to a physician for help with a mental health concern.
- Over fifty percent (50.8%) of respondents indicated a rating of “8” or higher for their satisfaction with their local public school district.
- On a scale of 1 to 10, where “10” is very satisfied, 20.3% of respondents rated the availability of higher education in Lenawee County an “8.”
- When asked to rate their satisfaction with the number of K-12 educational options in their community, 18.8% of respondents indicated a rating of “8.”
- Almost three-quarters (74.0%) of the respondents are employed in Lenawee County, and 13.9% work in Washtenaw County.
- Over eighty percent (86.5%) of respondents said that they had not changed jobs in the past three years.
- Under half (40.9%) of the respondents said that their employer does provide job related training.
- More than half of respondents (59.3%) felt that employers are sensitive to family needs.
- Over twenty percent (20.8%) of respondents rated their satisfaction with the availability of job or technical training a “5,” on a scale of 1 to 10 with “10” being “very satisfied.”



Executive Summary - con't.

- Over one-quarter (27.1%) of respondents rated their satisfaction with the availability of living wage jobs a “1,” “2,” or “3.”
- When asked to rate the largest barrier to employment in Lenawee County, 61.0% of respondents cited a lack of jobs.
- Eighty-five percent (85.0%) answered that they do know how to access assistance in finding employment.
- Seventy-seven percent (77.5%) of respondents indicated that they do not own or manage a business, while 22.5% of respondents do.
- Most respondents stated that their general health was good (44.8%) or very good (30.0%).
- Seventy-eight percent (78.8%) of respondents indicated that they had participated in some type of exercise or physical activity in the past month.
- Almost half of the respondents (44.0%) have had a complete physical within the past year.
- Seventy-eight of the 400 respondents (19.5%) indicated that they smoke cigarettes everyday.
- Over eighty percent (81.3%) said they had not had five or more drinks at any one time in the last 30 days.
- From highest to lowest, culture and recreation ratings were: quality of parks, quality of libraries, recreational activities, and cultural activities.
- Over twenty-four percent (24.3%) of respondents indicated that they visit county and city parks 1 to 3 times a year, followed by 23.8% of respondents who said they have never visited their local parks.
- Over half of the respondents (56.8%) stated that they are a member of a religious organization.
- Under half of the respondents (42.5%) have volunteered their time within the past year.



As part of the 2005 Lenawee Community Survey, South Central Michigan Works! has requested that Perspectives Consulting Group, Inc. complete a community survey with area residents. The 2005 Lenawee Community Survey consisted of 400 telephone interviews with a random sample of Lenawee County residents. A number of specialized topics were included on the 2005 Lenawee Community Survey, including: education, social and quality of life issues, health and health care, economic issues, community involvement, and demographic information.

There are three main sections to the report; **Survey Methodology**, **Research Results**, and **Conclusions**. In the **Survey Methodology** section, the survey development and execution are explained in detail. The **Research Results** section contains the responses to all of the survey questions, generally grouped into categories for easy reference.





The 2005 Lenawee Community Survey included 76 questions on a variety of topics, including education, social and quality of life issues, health and health care, economic issues, community involvement, and demographic information. The questions included various types of formats including yes/no, pre-defined choices and open-ended response. Development of the survey started with the ideas of the staff of South Central Michigan Works! Perspectives Consulting Group, Inc. developed the survey questions and ordered the survey based on generally accepted survey research principles. The survey instrument is included for reference in the **Appendices**.

Survey Instrument

A total of 400 completed surveys were obtained from Lenawee County residents. The sampling method used for this survey was random-digit dialing of telephone numbers with area telephone prefixes. The following telephone prefixes were contacted using random-digit dialing: 254, 263, 264, 265, 266, 423, 424, 431, 436, 443, 445, 447, 448, 451, 456, 458, 467, 486, 547, 592, 688.

Survey Execution

A list of random telephone numbers was prepared for each prefix and the numbers were dialed until 400 surveys were completed. A total of 5,068 calls were made to obtain the 400 completions from all prefixes. Since this was a random dialing of telephone numbers, many calls were made to disconnected numbers, businesses, people who did not live within Lenawee County, and people unable to participate in the survey. Surveys were only completed with adults age 18 or over.

The survey interviewing took place in June 2005, between the hours of 6:00 p.m. and 9:00 p.m. on weekdays. A pretest of 40 surveys was completed, with no significant difficulties or problems noted. These pretest surveys are included in the final results.

Based on the number of households in Lenawee County, and the number of survey completions, a confidence level and confidence interval can be calculated. In statistical terms, the confidence level is the likelihood that if the survey were replicated the results would be the same. The confidence level for this survey was 95 percent, meaning that 95 times out of 100, this survey would produce substantially the same results as achieved this time.

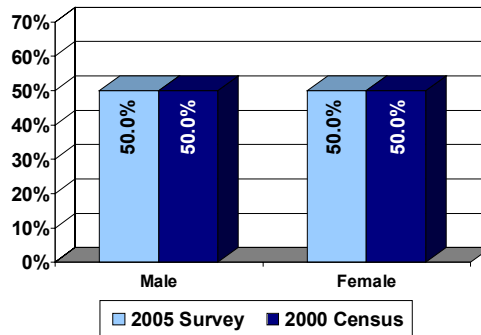


**Survey
Execution - con't.**

The confidence interval is the range that any answer could vary from the actual value. This is the “+/- xxx percent” margin of error value that pollsters reference. In this case, the 2005 Lenawee Community Survey has a confidence interval of +/- 5 percent. Therefore, the answer to any question on the survey is within plus or minus 5 percent of the actual value. When comparing two responses to a question, any difference of less than 10 percent needs to be examined carefully, since statistically the difference could be considered negligible.



Of the 400 respondents, 50.0% were male and 50.0% were female.



Respondent Profile

Chart 1
Gender of Respondent

To ensure that all ages of Lenawee County residents participated in the survey, minimum quota levels were set for each age group. All of the survey respondents were age 18 or over. Out of the 400 respondents, 32.0% were in the 45-64 age category, while 29.5% were in the 18-34 age category.

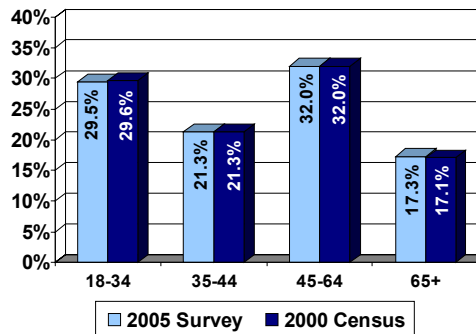


Chart 2
Age of Respondent

One of the survey questions asked respondents to indicate an appropriate household income range. Of the 400 respondents, 346 provided income information. The largest category of respondents (20.8%) indicated a household income of \$50,000 to \$74,999, followed by 20.3% of the respondents who have a household income between \$35,000 to \$49,999.

Income Category	2005 Survey	2000 Census
Less than \$15,000	8.0%	10.8%
\$15,000 - \$24,999	11.0%	12.8%
\$25,000 - \$34,999	12.3%	12.8%
\$35,000 - \$49,999	20.3%	18.2%
\$50,000 - \$74,999	20.8%	23.9%
\$75,000 - \$99,999	10.5%	11.6%
\$100,000 and over	3.8%	9.8%
Refused/NA	13.5%	N/A

Chart 3
Household Income of Respondent



Respondent Profile - con't.

Chart 4

Ethnic Background of Respondent

Ethnic Background	2005 Survey	2000 Census
Caucasian/White	91.3%	89.2%
Hispanic	3.0%	7.0%
American Indian/Native American	3.0%	0.3%
African American/Black	1.3%	2.1%
Asian or Pacific Islander	1.0%	0.4%
Other/Unsure	0.3%	1.0%

Of the 400 survey respondents, 365 (91.3%) named White/Caucasian as their primary ethnic background.

Twelve respondents (3.0%) named Hispanic as their

primary ethnic background, while 3.0% named American Indian/Native American. Five respondents (1.3%) named their primary ethnic background as African American/Black. Other responses include Greek.

Chart 5

Lived in Area

Years	% Respondents
Less than 1 year	2.0%
1 to 3 years	5.5%
4 to 6 years	5.8%
7 to 10 years	10.8%
11 to 20 years	21.5%
21 or more years	54.5%
Unsure/NA	0.0%

Respondents were asked to indicate how long they have lived in Lenawee County. The most frequent response was more than 21 years (54.5%), followed by 11 to 20 years (21.5%).



In Lenawee County, 159 respondents (39.8%) live in the 49221 ZIP code, followed by 13.8% who live in 49286. Twenty percent (20.0%) of respondents provided ZIP codes that are not mentioned in the chart, and are listed below:

11 Respondents
49229

10 Respondents
49253

9 Respondents
49235

8 Respondents
49287

7 Respondents
49220
49238

6 Respondents
49248

5 Respondents
49233

3 Respondents
49230
49276
49279

2 Respondents
49268

1 Respondent
49224
49263
49266
49270
49282
49289

ZIP Code	% Respondents
49221	39.8%
49286	13.8%
49228	6.0%
49247	5.5%
49236	5.3%
49265	5.0%
49256	4.3%
Other	20.0%
Refused/NA	0.5%

Respondent Profile - con't.

Chart 6
ZIP Code of Respondent



Respondent Profile - con't.

Chart 7

School District of Respondent

School District	% Respondents
Adrian	29.5%
Tecumseh	15.5%
Madison	7.8%
Blissfield	7.3%
Hudson	6.8%
Onsted	6.8%
Clinton	5.3%
Morenci	4.5%
Other	13.5%
Unsure/NA	3.3%

Respondents were asked to name the school district they live in. A majority of the respondents (29.5%) stated that they live in the Adrian school district, followed by 15.5% who live in the Tecumseh school district. Over thirteen percent (13.5%) of respondents stated that they live in one of the following school districts, which are not mentioned in the chart:

15 Respondents

Addison

12 Respondents

Sand Creek

11 Respondents

Britton

6 Respondents

Deerfield

4 Respondents

Columbia

2 Respondents

Lincoln

Manitou Beach

1 Respondent

Litchfield

Pittsford



Sixty-three percent (63.0%) of respondents are married, followed by 17.5% of respondents who are single. Over nine percent (9.5%) of respondents are divorced and 9.5% of respondents are widowed.

Marital Status	2005 Survey	2000 Census
Married	63.0%	60.3%
Single	17.5%	23.1%
Widowed	9.5%	6.3%
Divorced	9.5%	9.2%
Separated	0.5%	1.2%

* Census data used with population age 15 and older.

Respondent Profile - con't.

Chart 8 Marital Status of Respondent

Respondents were asked to indicate how many children they have under the age of 18. The majority of respondents, 70.0%, have no children under the age of 18. Over fourteen percent (14.8%) of respondents have one child under 18, followed by 11.8% of respondents who have two children under 18.

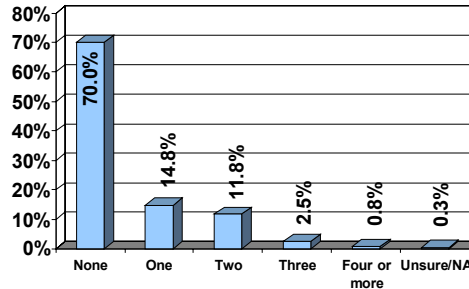


Chart 9 Have Children Under 18

One of the survey questions asked respondents to indicate the highest level of education they have completed. Over forty-eight percent (48.3%) indicated that they have graduated from high school and sixteen percent (16.8%) of respondents have attended college but do not have a degree. Over sixteen percent (16.3%) of respondents have earned a Bachelor's degree.

Level of education	2005 Survey	2000 Census
8th grade	1.0%	4.5%
Some high school	4.0%	13.3%
High school graduate	48.3%	37.5%
Some college, no degree	16.8%	24.0%
Associate's degree	6.5%	5.9%
Bachelor's degree	16.3%	10.0%
Graduate or professional degree	5.8%	4.8%
Post graduate study, but no degree	1.3%	N/A
Other	0.3%	N/A

Chart 10 Education Level of Respondent



Respondent Profile - con't.

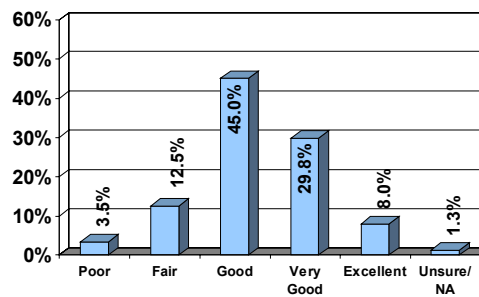
Chart 11 Employment Status of Respondent

Employment Status	% Respondents
Currently employed full-time	44.8%
Retired	22.3%
Unemployed, not seeking work	9.5%
Currently employed part-time	7.3%
Unemployed, seeking work	7.3%
Homemaker	5.3%
Student	3.0%
Other	0.8%

When asked about current employment status, 44.8% of respondents indicated that they are currently employed full-time, while 7.3% of respondents are currently employed part-time. Twenty-two percent (22.3%) of respondents are currently retired.

Top Issues Facing Lenawee County

Chart 12 Quality of Life in Lenawee County



The first question asked respondents to rate the quality of life in Lenawee County. Forty-five percent (45.0%) of respondents stated that the quality of life was "good," followed by 29.8% of respondents who said it was "very good" and 12.5% of respondents who stated it was "fair."

An average rating was calculated for the responses to this question. Each of the responses was assigned a number; 1 being "Poor" and 5 being "Excellent." Therefore, an average of "3" would indicate that the average response was between "Poor" and "Excellent." The average rating for "How would you rate the quality of life in Lenawee County" was 3.27.

Demographic categories with significantly higher averages include: ZIP code 49236 (3.67) and ZIP code 49286 (3.64).

Demographic categories with significantly lower averages include: ZIP code 49221 (3.11), single (3.06), and some high school (2.63).

There was no strong correlation between responses to this statement and other statements.



Issue	% Total	% First	% Second	% Third
Employment	36.0%	28.0%	6.8%	1.3%
Schools/education	20.0%	5.8%	8.8%	5.5%
Health care	11.8%	4.8%	5.5%	1.5%
Taxes	7.8%	4.5%	2.0%	1.3%
Roads	6.0%	2.8%	2.3%	1.0%
Substance abuse	3.5%	1.0%	1.0%	1.5%
Crime	3.3%	1.5%	1.0%	0.8%
Housing	2.8%	0.5%	1.3%	1.0%
Youth Concerns	2.0%	1.0%	0.5%	0.5%
Other	32.5%	13.7%	11.4%	7.7%
Unsure/NA		36.8%	59.8%	78.3%

* Responses total more than 100% because respondents were able to list more than one issue.

Respondents were then asked to state the top three issues or concerns facing Lenawee County residents. Employment was the top issue named by 36.0% of respondents, while 20.0% of respondents stated schools/ education and 11.8% of respondents stated health care.

Over thirty percent (32.5%) of respondents gave a response which is not mentioned in the chart. Those responses are stated in the text below:

Other responses given include:

Business/Development

- Overdevelopment (8 respondents)*
- Growth (5 respondents)*
- Traffic (4 respondents)*
- Planning (2 respondents)*
- Downtown lack of production (1 respondent)*
- Have on street parking downtown without a permit (1 respondent)*
- Land use (1 respondent)*
- Money for fire fighters (1 respondent)*
- Outsourcing (1 respondent)*
- Raid on dog business, negative (1 respondent)*
- Rural Atmosphere (1 respondent)*

Culture and Recreation

- Recreational activities (6 respondents)*
- Shopping (3 respondent)*
- Cultural activities (1 respondent)*
- Restaurants (1 respondent)*
- Weather (1 respondent)*

Top Issues Facing Lenawee County - con't.

Chart 13

Top Three Issues Facing Lenawee County



Top Issues Facing Lenawee County - con't.

Crime/Safety

Child safety (1 respondent)
Destruction of farms (1 respondent)
Dogs being stolen (1 respondent)
Safety (1 respondent)

Health and Social Issues

Health Insurance (3 respondents)
Racism (1 respondent)

Jobs/Economy

Gas prices (6 respondents)
Finances (5 respondents)
Wages (2 respondents)
Commerce (1 respondent)
Economy (1 respondent)
Land value (1 respondent)

Governmental/Political

Court System (7 respondents)
City government (3 respondents)
Local government (2 respondents)
Budget cuts (1 respondent)
Politics (1 respondent)

Services

Police (7 respondents)
Garbage pick up (6 respondents)
Water (6 respondents)
Overcrowded jail (4 respondents)
Emergency services (2 respondents)
Power lines, lose power too much (1 respondent)
Putting in plants and taking up too much water (1 respondent)
Service (1 respondent)

Environmental

Pollution (2 respondents)
Agriculture protection (1 respondent)
Environment (1 respondent)
Quality of Air (1 respondent)

Miscellaneous

Adrian is a huge problem (1 respondent)
Animal control (1 respondent)
Annexation in Adrian (1 respondent)
Dog license (1 respondent)
Legal issues (1 respondent)
Programs for children (1 respondent)
Waste of money renovating (1 respondent)



After naming the top three issues facing Lenawee County residents, respondents were asked to state the most significant issue facing their own family. Almost two-thirds of the respondents (61.5%) stated that they were unsure as to the top issue facing their family. Employment was the top issue named by 10.0% of respondents, while schools/education was rated the top issue by 7.0% of respondents and health care was listed by 5.0%. Over seven percent (7.8%) of respondents provided other responses which are listed below.

Issue	% Respondents
Employment	10.0%
Schools/education	7.0%
Health care	5.0%
Taxes	3.8%
Finances	1.3%
Senior citizens concerns	1.0%
Housing	1.0%
Wages	0.8%
Poverty	0.8%
Other	7.8%
Unsure/NA	61.5%

Top Issues Facing Lenawee County - con't.

Chart 14 Most Important Issue to Their Family

2 Respondents

Gas prices
Recreational activities
Social Security
Traffic

1 Respondent

Animal control
Child support problems
City government
Destruction of farms
Disability
Dogs being stolen
Economics
Handicap accessibility
Health insurance
Police
Putting in plants and taking up too much water
Raid on dog business, negative
Retirement
Senators and Congress handling judges fines, etc.
Water



Lenawee County Services

The survey respondents were then asked to rate their satisfaction with different services in Lenawee County. Respondents rated the services on a scale from 1 to 10, with 1 being “not satisfied at all” and 10 being “very satisfied.”

Chart 15

Average Ratings - Lenawee County Services

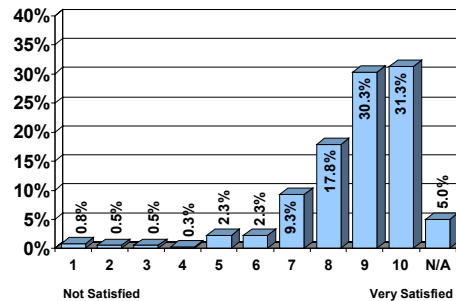
Issue	2005 Average
Rescue and fire services	8.64
Police services	7.94
Snow removal	6.57
Public Transportation	4.76
Condition of road surfaces	4.72

An average rating was calculated for each of the responses. Therefore, an average of 5.5 would indicate that the average response was between “not satisfied at all” and “very satisfied.”

Rescue and fire services in Lenawee County (380 respondents – 8.64 average)

Chart 16

Rescue and Fire Services



Three hundred and seventeen respondents (79.4%) rated their satisfaction with the rescue and fire services as an “8,” “9,” or “10.” Almost one-third of respondents (31.3%) indicated a “10” rating, meaning that they are very satisfied with the rescue and fire services in Lenawee County. Five percent (5.0%) of

respondents indicated that they were unsure about the issue or did not provide an answer.

Demographic categories with significantly higher averages include: ZIP code 49228 (9.45), ZIP code 49286 (9.20), age 65+ (8.94), associate’s degree (9.24), and female (8.87).

The only demographic category with a significantly lower average is: male (8.40).



There was a strong correlation between responses to the statement “Rate your satisfaction with rescue and fire services in Lenawee County” and the statement “Rate your satisfaction with police services in Lenawee County.” The higher they rated satisfaction with rescue and fire services in Lenawee County, the more likely they were to highly rate satisfaction with police services in Lenawee County.

There was a strong correlation between responses to the statement “Rate your satisfaction with rescue and fire services in Lenawee County” and the statement “Rate the availability of open child care slots.” The higher they rated satisfaction with rescue and fire services in Lenawee County, the more likely they were to highly rate the availability of open child care slots.

There was a strong correlation between responses to the statement “Rate your satisfaction with rescue and fire services in Lenawee County” and the statement “Rate the availability of day care.” The higher they rated satisfaction with rescue and fire services in Lenawee County, the more likely they were to highly rate the availability of day care.

Police services in Lenawee County (381 respondents – 7.94 average)

When asked to rate police services on a scale of 1 to 10, 24.8% of respondents gave a rating of “9,” while 21.5% of respondents rated the police services an “8.” Eighty-four respondents (21.0%) indicated that they were “very satisfied” (a rating of “10”) with the police services in Lenawee County, while 4.8% of respondents indicated they were unsure about the issue or did not provide an answer.

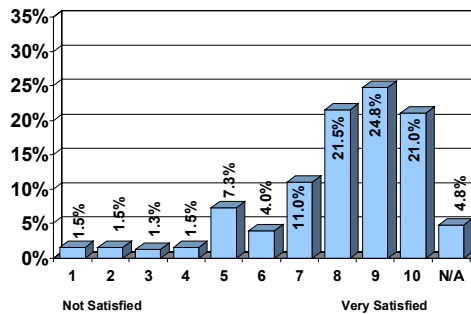


Chart 17
Police Services

Demographic categories with significantly higher averages include: age 65+ (8.58), household income \$25,000-\$34,999 (8.34), and female (8.25).

Demographic categories with significantly lower averages include: American Indian/Native American (6.08) and male (7.63).

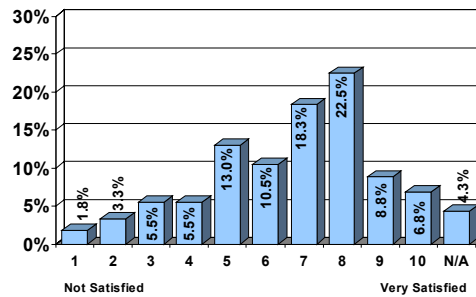


There was a strong correlation between responses to the statement “Rate your satisfaction with police services in Lenawee County” and the statement “Rate your satisfaction with rescue and fire services in Lenawee County.” The higher they rated satisfaction with police services in Lenawee County, the more likely they were to highly rate satisfaction with rescue and fire services in Lenawee County.

There was a strong correlation between responses to the statement “Rate your satisfaction with police services in Lenawee County” and the statement “Rate the overall quality of child care in Lenawee County.” The higher they rated satisfaction with police services in Lenawee County, the more likely they were to highly rate the overall quality of child care in Lenawee County.

Snow removal in Lenawee County (383 respondents – 6.57 average)

**Chart 18
Snow Removal**



Respondents were asked to rate their satisfaction with the snow removal in Lenawee County. Over twenty-two percent (22.5%) of respondents indicated a rating of “8,” followed by 18.3% of respondents who indicated a rating of “7.”

Sixty-two respondents (15.6%) gave a rating of “9” or above, while 4.3% of respondents were unsure or did not provide an answer.

Demographic categories with significantly higher averages include: ZIP code 49265 (7.40) and high school graduate (6.86).

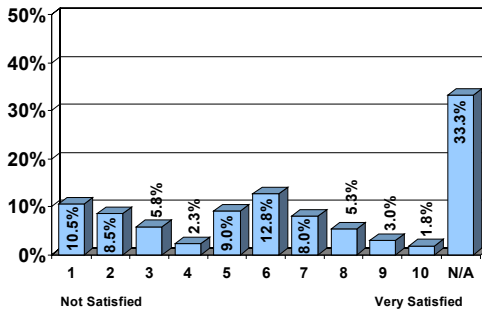
The demographic category with a significantly lower average is: ZIP code 49247 (5.57).

There was no strong correlation between responses to this statement and other statements.



Public transportation in Lenawee County (267 respondents – 4.76 average)

Almost twenty-five percent (24.8%) gave public transportation a satisfaction rating of “3”, “2,” or “1.” Forty-two respondents (10.5%) rated their satisfaction with the public transportation in Lenawee County as “not satisfied at all.” Thirty-three percent (33.3%) of respondents were unsure or did not provide an answer.



Lenawee County Services - con't.

Chart 19
Public Transportation

Demographic categories with significantly higher averages include: ZIP code 49256 (6.27) and high school graduate (5.25).

Demographic categories with significantly lower averages include: ZIP code 49247 (3.00) and household income \$100,000 and over (3.50).

There were no strong correlation between responses to this statement and other statements.

Condition of road surfaces in Lenawee County (395 respondents – 4.72 average)

Forty-one respondents (10.3%) indicated that they were “not satisfied at all” with the condition of road surfaces in Lenawee County. Over forty percent of respondents (44.1%) rated the condition of road surfaces with a “4” or less, while only 19.6% gave a rating of “7” or above. Five respondents (1.3%) were unsure or did not provide an answer.

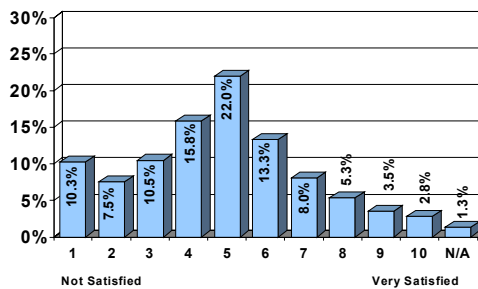


Chart 20
Condition of Road Surfaces

There are no demographic categories with significantly higher averages.

The demographic category with a significantly lower average is: ZIP code 49256 (3.59).



There was no strong correlation between responses to this statement and other statements.

Crime and Substance Abuse

The survey respondents were asked, "On a scale from 1 to 10, with 1 being "not a serious problem" to 10 being "a very serious problem," how would you rate the following issues in Lenawee County?"

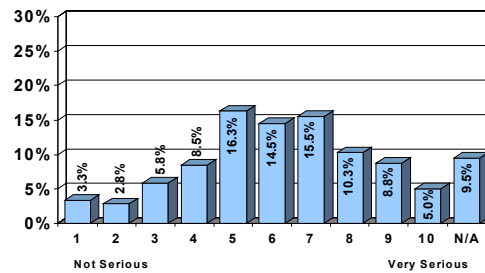
Chart 21
Average Ratings - Crime and Substance Abuse

Issue	2005 Average
Drug or substance abuse	6.05
Crime	4.66

An average rating was calculated for each of the factors. Therefore, an average of 5.5 would indicate that the average response was between not a serious problem and a very serious problem.

Drug or Substance Abuse in Lenawee County (362 respondents – 6.05 average)

Chart 22
Drug or Substance Abuse



Respondents were asked to rate the issue of drug or substance abuse in Lenawee County. Almost seventeen percent (16.3%) of respondents rated the issue a "5," while 15.5% rated it a "7." Over twenty-four percent (24.1%) of respondents rated

the issue an "8" or above. Thirty-eight respondents (9.5%) were unsure or provided no answer.

Demographic categories with significantly higher averages include: ZIP code 49221 (6.41) and divorced (6.94).

There are no demographic categories with significantly lower averages.



There was a strong correlation between responses to the statement “Rate the seriousness of drug or substance abuse in Lenawee County” and the statement “Rate the seriousness of crime in Lenawee County.” The higher they rated drug or substance abuse as a problem in Lenawee County, the more likely they were to highly rate crime as a serious problem in Lenawee County.

Crime and Substance Abuse - con't.

Crime in Lenawee County (389 respondents – 4.66 average)

Crime in Lenawee County was given a “5” rating by 21.3% of respondents. Over twenty percent (20.5%) of respondents rated crime a “3,” while 15.3% of respondents gave crime a “4” rating. Over nineteen percent (19.1%) of respondents rated crime in Hillsdale County a “7” or above.

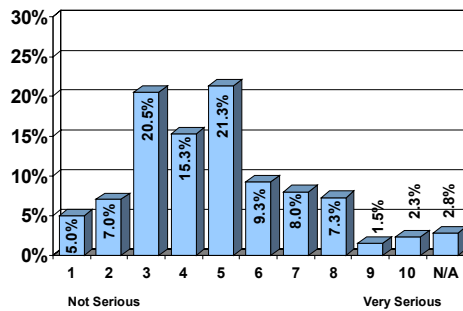


Chart 23
Crime

The demographic category with a significantly higher average is: household income \$15,000-\$24,999 (5.41).

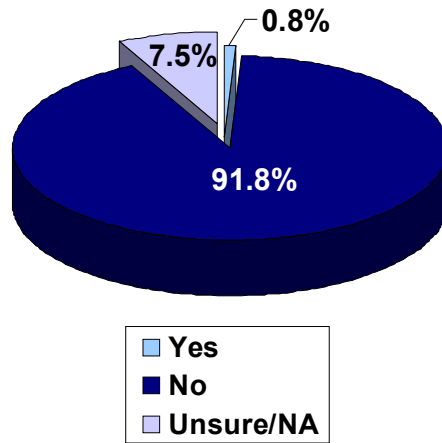
The demographic category with a significantly lower average is: household income \$35,000-\$49,999 (4.07).

There was a strong correlation between responses to the statement “Rate the seriousness of crime in Lenawee County” and the statement “Rate the seriousness of drug or substance abuse in Lenawee County.” The higher they rated crime as a problem in Lenawee County the more likely they were to highly rate drug or substance abuse as a serious problem in Lenawee County.



Crime and Substance Abuse - con't.

Chart 24
Difficulty Accessing Substance Abuse Treatment Services

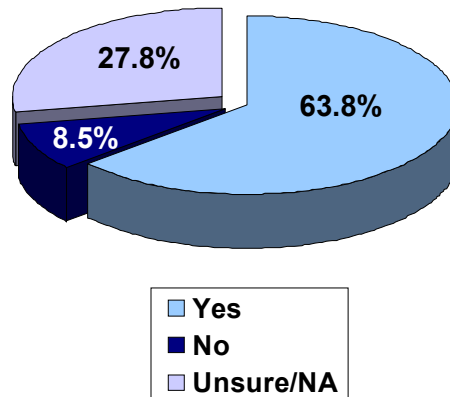


Of the 400 respondents, 91.8% do not have difficulty accessing substance abuse treatment services, while 0.8% indicated that they do. Over seven percent (7.5%) of respondents were unsure or provided no answer.

Three respondents gave reasons why they have difficulty accessing substance abuse treatment services and their responses include:

- 1 Respondent**
- Cost
- No insurance
- Not enough services

Chart 25
Efforts to Provide Substance Abuse Care and Services



Respondents were asked, "Do you feel sufficient efforts are being made in Lenawee County to provide substance abuse care and services?" Almost two-thirds (63.8%) of respondents indicated that they feel sufficient efforts are being made, while 27.8% of respondents were unsure.

The 8.5% of respondents who feel that the current efforts are insufficient were asked why, and their responses include:

- 7 Respondents**
- Could do more
- 4 Respondents**
- Need more exposure
- Need more services
- 3 Respondents**
- Fund cutting
- 2 Respondents**
- Cost
- More attention at school



1 Respondent

All about money

Don't realize what is necessary to provide or create a better system

If your child is not in prison, can't get help for substance abuse

*Just take care of a short term problem, and throw them back on the streets
to do it again*

More money spent on care and less on prison

Need more drug education

Not effective

People still doing drugs

Should focus on prevention

*Substance abuse rates are high, so obviously not enough effort is being
made*

Too many drugs in school and county still

Too many kids using



Family Issues

The survey respondents were asked, "On a scale from 1 to 10, with 1 being "not a serious problem" to 10 being "a very serious problem," how would you rate the following issues in Lenawee County?"

Chart 26
Average Ratings - Family Issues

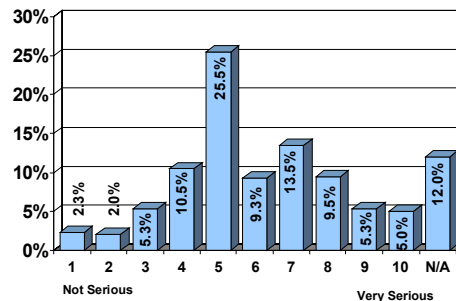
Issue	2005 Average
Parents not staying together	5.85
Single parent households	5.72
Unwed pregnancies	5.44

An average rating was calculated for each of the factors. Therefore, an average of 5.5 would indicate that the average response was

between not a serious problem and a very serious problem.

Parents not staying together in Lenawee County (352 respondents – 5.85 average)

Chart 27
Parents Not Staying Together



Over twenty-five percent (25.5%) of respondents rated the issue of parents not staying together a "5," followed by 13.5% of respondents who indicated a rating of "7." Forty-one respondents (10.3%) rated parents not staying together a "9" or "10," while 12.0% were unsure or did not provide an answer.

The demographic category with a significantly higher average is: divorced (6.50).

Demographic categories with significantly lower averages include: single (5.39) and post graduate study, but no degree (4.75).

There was a strong correlation between responses to the statement "Rate the seriousness of parents not staying together in Lenawee County" and the statement "Rate the seriousness of unwed pregnancies in Lenawee County." The higher they rated parents not staying together as a problem in Lenawee County, the more likely they were to highly rate unwed pregnancies as a serious problem in Lenawee County.



There was a strong correlation between responses to the statement “Rate the seriousness of parents not staying together in Lenawee County” and the statement “Rate the seriousness of single parent households in Lenawee County.” The higher they rated parents not staying together as a problem in Lenawee County, the more likely they were to highly rate single parent households as a serious problem in Lenawee County.

Single parent households in Lenawee County (348 respondents – 5.72 average)

Nineteen percent (19.0%) of respondents rated the issue a rating of “5,” while 20.1% of respondents indicated a rating of “8” or above. Fourteen respondents (3.5%) indicated the issue was not a serious problem, while fifty-two respondents (13.0%) were unsure or did not provide an answer.

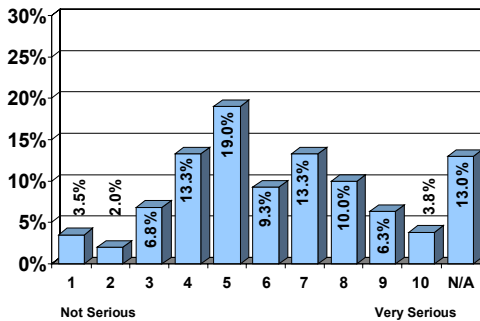


Chart 28
Single Parent Households

There were no categories with significantly higher averages.

The demographic category with a significantly lower average is: ZIP code 49228 (4.77).

There was a strong correlation between responses to the statement “Rate the seriousness of single parent households in Lenawee County” and the statement “Rate the seriousness of parents not staying together in Lenawee County.” The higher they rated single parent households as a problem in Lenawee County, the more likely they were to highly rate parents not staying together as a serious problem in Lenawee County.

There was a strong correlation between responses to the statement “Rate the seriousness of single parent households in Lenawee County” and the statement “Rate the seriousness of unwed pregnancies in Lenawee County.” The higher they rated single parent households as a problem in Lenawee County, the more likely they were to highly rate unwed pregnancies as a serious problem in Lenawee County.

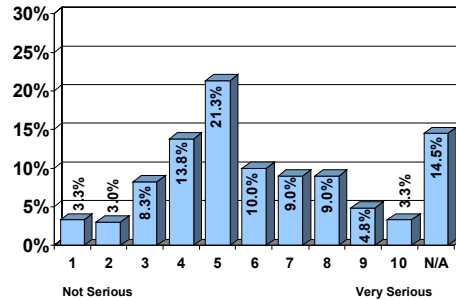


Family Issues - con't.

There was a strong correlation between responses to the statement “Rate the seriousness of single parent households in Lenawee County” and the statement “Rate the affordability of day care in Lenawee County.” The less serious they rated single parent households as a problem in Lenawee County, the more likely they were to rate affordability of day care in Lenawee County as a less serious problem.

Unwed pregnancies in Lenawee County (342 respondents – 5.44 average)

Chart 29
Unwed Pregnancies



Twenty-one percent (21.3%) of respondents rated the issue of unwed pregnancies a “5,” followed by 13.8% of respondents who stated a rating of “4.” Thirteen respondents (3.3%) indicated that unwed pregnancies are a very serious problem in Lenawee County, while 14.5% of respondents were unsure or did not provide an answer.

Demographic categories with significantly higher averages include: widowed (6.52), some high school (7.00), and Hispanic (6.92).

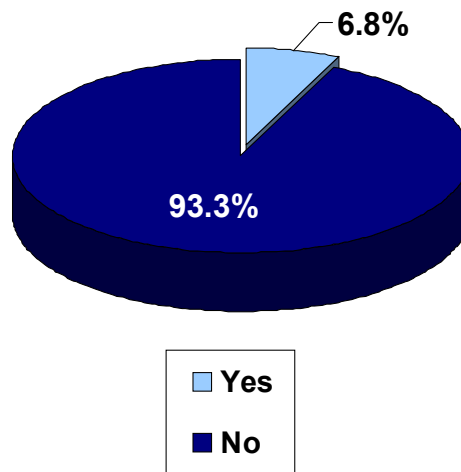
There are no demographic categories with significantly lower averages.

There was a strong correlation between responses to the statement “Rate the seriousness of unwed pregnancies in Lenawee County” and the statement “Rate the seriousness of parents not staying together in Lenawee County.” The higher they rated unwed pregnancies as a problem in Lenawee County, the more likely they were to highly rate parents not staying together as a serious problem in Lenawee County.

There was a strong correlation between responses to the statement “Rate the seriousness of unwed pregnancies in Lenawee County” and the statement “Rate the seriousness of single parent households in Lenawee County.” The higher they rated unwed pregnancies as a problem in Lenawee County, the more likely they were to highly rate single parent households as a serious problem in Lenawee County.



Just over seven percent (6.8%) of respondents indicated that they use child care regularly, while 93.3% of respondents do not use child care.



Child Care

Chart 30

Use Child Care Regularly

Those respondents who use child-care regularly were also asked to rate several different questions about child care in Lenawee County.

Respondents rated the questions on a scale from 1 to 10, with 1 being "poor" and 10 being "excellent." An average rating was calculated for each

Issue	2005 Average
Overall quality of child care	8.04
Availability of open child care slots	7.36
Availability of day care	7.27
Affordability of day care	6.27

of the responses. Therefore, an average of 5.5 would indicate that the average response was between "poor" and "excellent."

Chart 31

Average Ratings - Child Care

Overall quality of child care in Lenawee County (27 respondents – 8.04 average)

Over forty percent (40.7%) of respondents rated the overall quality of child care an "8," followed by 18.5% of respondents who gave it a rating of "7." Almost fifteen percent (14.8%) felt the overall quality of child care in Lenawee County was "excellent" or a "10" rating, and no respondents rated the issue with less than a "6" rating.

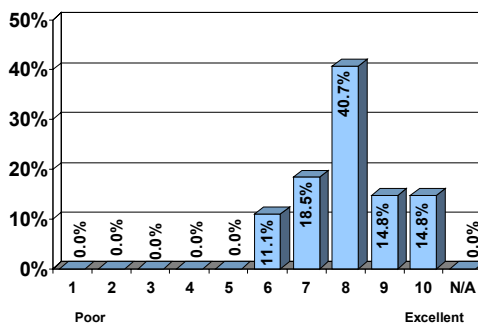


Chart 32

Overall Quality of Child Care



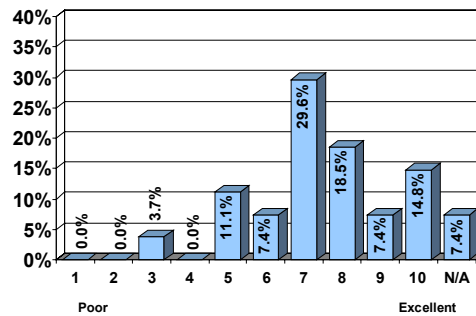
There were no demographic categories with significantly higher averages.

There were no demographic categories with significantly lower averages.

There was a strong correlation between responses to the statement “Rate the overall quality of child care in Lenawee County” and the statement “Rate your satisfaction with police services in Lenawee County.” The higher they rated the overall quality of child care in Lenawee County, the more likely they were to highly rate satisfaction with police services in Lenawee County.

Availability of open child care slots in Lenawee County (25 respondents – 7.36 average)

Chart 33
Availability of Open Child Care Slots



Almost thirty percent (29.6%) rated the availability of open child care slots in Lenawee County a “7,” followed by 18.5% of respondents who indicated a rating of “8.” Fourteen percent (14.8) of respondents stated that the availability of open child care slots was “excellent” or a rating of “10,” while 7.4% were unsure.

There were no demographic categories with significantly higher averages.

There were no demographic categories with significantly lower averages.

There was a strong correlation between responses to the statement “Rate the availability of open child care slots in Lenawee County” and the statement “Rate your satisfaction with rescue and fire services in Lenawee County.” The higher they rated the availability of open child care slots in Lenawee County, the more likely they were to highly rate satisfaction with rescue and fire services in Lenawee County.

There was a strong correlation between responses to the statement “Rate the availability of open child care slots in Lenawee County” and the statement “Rate the availability of day care in Lenawee County.” The higher they rated the availability of open child care slots in Lenawee County, the more likely they were to highly rate the availability of day care in Lenawee County.



There was a strong correlation between responses to the statement “Rate the availability of open child care slots in Lenawee County” and the statement “Rate the affordability of day care in Lenawee County.” The higher they rated the availability of open child care slots in Lenawee County, the more likely they were to highly rate the affordability of day care in Lenawee County.

Availability of day care in Lenawee County (26 respondents – 7.27 average)

Over one-third of respondents (37.0%) rated the availability of day care as a “7.” No respondents rated the issue below a rating of “4.” Eighteen percent (18.5%) of respondents stated that they felt the availability of day care was “excellent” or a “10” rating, while 3.7% were unsure or provided no answer.

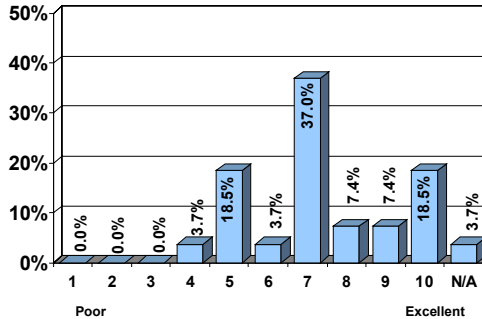


Chart 34
Availability of Day Care

There were no demographic categories with significantly higher averages.

There were no demographic categories with significantly lower averages.

There was a strong correlation between responses to the statement “Rate the availability of day care in Lenawee County” and the statement “Rate your satisfaction with rescue and fire services in Lenawee County.” The higher they rated the availability of day care in Lenawee County, the more likely they were to highly rate satisfaction with rescue and fire services in Lenawee County.

There was a strong correlation between responses to the statement “Rate the availability of day care in Lenawee County” and the statement “Rate your satisfaction with quality of housing in Lenawee County.” The higher they rated the availability of day care in Lenawee County, the more likely they were to highly rate satisfaction with quality of housing in Lenawee County.



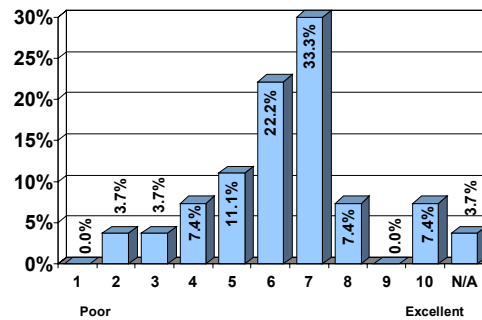
Child Care - con't.

There was a strong correlation between responses to the statement "Rate the availability of day care in Lenawee County" and the statement "Rate the availability of open child care slots in Lenawee County." The higher they rated the availability of day care in Lenawee County, the more likely they were to highly rate the availability of open child care slots in Lenawee County.

There was a strong correlation between responses to the statement "Rate the availability of day care in Lenawee County" and the statement "Rate the affordability of day care in Lenawee County." The higher they rated the availability of day care in Lenawee County, the more likely they were to highly rate the affordability of day care in Lenawee County.

Affordability of day care in Lenawee County (26 respondents – 6.27 average)

Chart 35
Affordability of Day Care



One-third (33.3%) of respondents who use day care regularly rated the affordability a "7," followed by 22.2% who rated the issue a "6." Over seven percent (7.4%) indicated that the affordability of day care is a "3" or below. Almost four percent (3.7%) were unsure or provided no answer.

There were no demographic categories with significantly higher averages.

There were no demographic categories with significantly lower averages.

There was a strong correlation between responses to the statement "Rate the affordability of day care in Lenawee County" and the statement "Rate the seriousness of single parent households in Lenawee County." The lower they rated the affordability of day care in Lenawee County, the more likely they were to rate lower the seriousness of single parent households in Lenawee County.

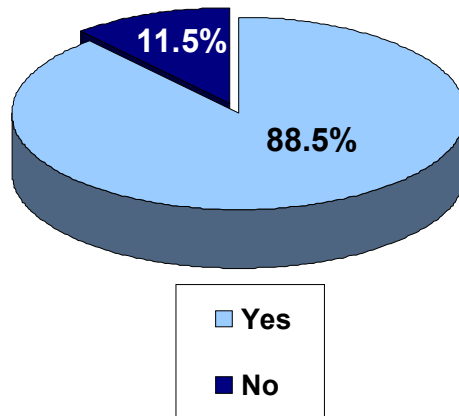
There was a strong correlation between responses to the statement "Rate the affordability of day care in Lenawee County" and the statement "Rate the availability of open child care slots." The higher they rated the affordability of day care in Lenawee County, the more likely they were to highly rate the availability of open child care slots.



Child Care - con't.

There was a strong correlation between responses to the statement "Rate the affordability of day care in Lenawee County" and the statement "Rate the availability of day care." The higher they rated the affordability of day care in Lenawee County, the more likely they were to highly rate the availability of day care.

Over eighty percent (88.0%) of the respondents own a home in Lenawee County, while 11.5% of respondents do not own their own home.



Housing

Chart 36
Home Owner

Respondents were asked to rate their satisfaction with housing issues in Lenawee County.

Respondents rated the issues on a scale from 1 to 10, with 1 being "not satisfied at all" and 10 being "very satisfied." An average rating was calculated for each of the responses. Therefore, an average of 5.5 would indicate that the average response was between not satisfied at all and very satisfied.

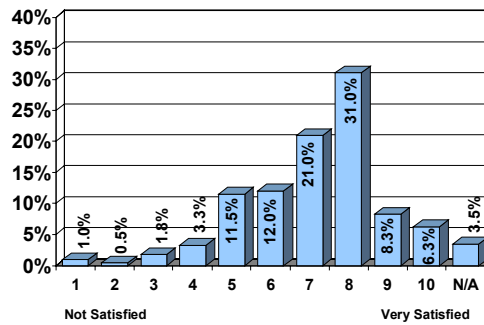
Issue	2005 Average
Quality of housing	7.06
Availability of affordable housing	6.75

Chart 37
Average Ratings - Housing



Chart 38
Quality of Housing

Quality of housing in Lenawee County (386 respondents – 7.06 average)



Of the 400 survey respondents, 31.0% rated their satisfaction with the quality of housing in Lenawee County an “8,” followed by 21.0% of respondents who indicated a rating of “7.” Fourteen respondents (3.5%) stated that they were unsure or did not provide an answer.

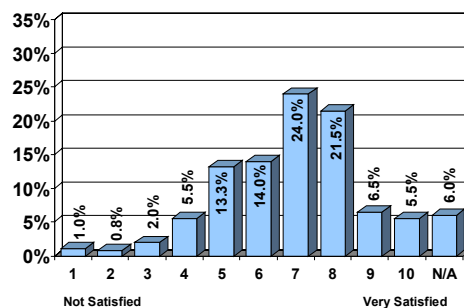
Demographic categories with significantly higher averages include: ZIP code 49265 (7.70) and ZIP code 49286 (7.85).

There were no demographic categories with significantly lower averages.

There was a strong correlation between responses to the statement “Rate your satisfaction with the quality of housing in Lenawee County” and “Rate the availability of day care in Lenawee County.” The higher they rated satisfaction with the quality of housing, the more likely they were to highly rate the availability of day care in Lenawee County.

Availability of affordable housing to fit your needs in Lenawee County (376 respondents – 6.75 average)

Chart 39
Availability of Affordable Housing



Respondents were asked, “How would you rate your satisfaction with the availability of affordable housing to fit your needs?” Over half of the respondents (59.5%) rated their satisfaction as a “6,” “7,” or “8.” Twenty-four respondents (6.0%) were unsure or provided no answer.

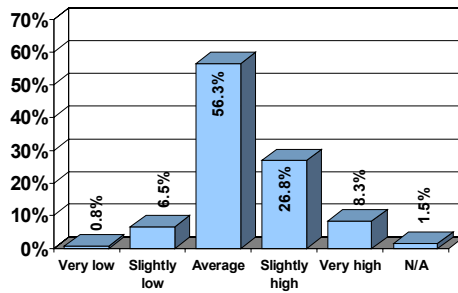
Demographic categories with significantly higher averages include: ZIP code 49286 (7.42), widowed (7.34), African American/Black (8.20), and household income \$50,000-\$74,999 (7.13).

Demographic categories with significantly lower averages include: ZIP code 49256 (5.59), not a home owner (6.18), and age 35-44 (6.35).



There was no strong correlation between responses to this statement and other statements.

Respondents were asked what they thought about the cost of living in Lenawee County. Over fifty-six percent (56.3%) of respondents stated that the cost of living in Lenawee County is average, while 26.8% of respondents felt it was slightly high and 8.3% of respondents felt it was very high. Six respondents (1.5%) were unsure.



Housing - con't.

Chart 40

Cost of Living in Lenawee County

The survey respondents were then asked to rate their satisfaction with four health care issues in Lenawee County. Respondents rated the services on a scale from 1 to 10, with 1 being "not satisfied at all" and 10 being "very satisfied."

An average rating was calculated for each of the responses. Therefore, an average of 5.5 would indicate that the average response was between "not satisfied at all" and "very satisfied."

Health Care

Issue	2005 Average
Availability of health care services	7.22
Quality of health care services	7.11
Availability of affordable health insurance	5.32
Cost of health care services	4.86

Chart 41

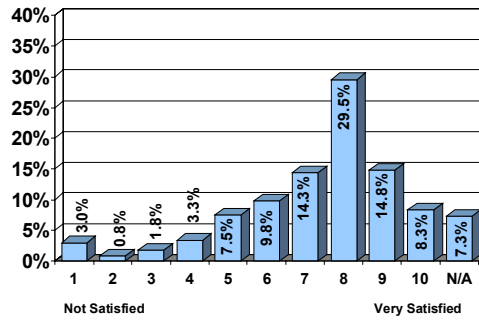
Average Ratings - Health Care



Health Care - con't.

Chart 42
**Availability
of Health
Care Services**

Availability of health care services in Lenawee County (371 respondents – 7.22 average)



Almost thirty percent (29.5%) of respondents rated the availability of health care services an “8,” followed by 14.8% of respondents who indicated a rating of “9.” Over eight percent (8.3%) of respondents were “very satisfied” (a rating of “10”) with the health care services

available in Lenawee County, while 7.3% were unsure or did not provide an answer.

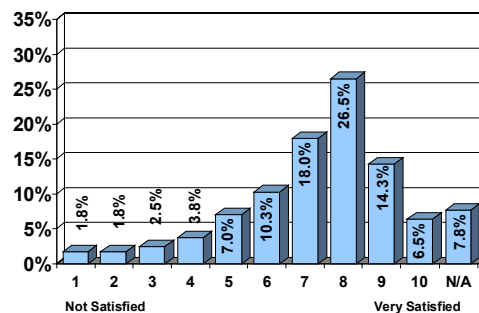
Demographic categories with significantly higher averages include: ZIP code 49236 (8.19), ZIP code 49286 (7.73), and age 65+ (8.00).

The demographic category with a significantly lower average is: age 35-44 (6.61).

There was a strong correlation between responses to the statement “Rate your satisfaction with the availability of health care services in Lenawee County” and the statement “Rate your satisfaction with the quality of health care services in Lenawee County.” The higher they rated satisfaction with the availability of health care services in Lenawee County, the more likely they were to highly rate satisfaction with the quality of health care services in Lenawee County.

Chart 43
**Quality of
Health Care
Services**

Quality of health care services in Lenawee County (369 respondents – 7.11 average)



Almost fifty percent (47.3%) of respondents rated their satisfaction with the quality of health care services an “8,” “9,” or “10.” Twenty-six respondents (6.5%) stated that they are “very satisfied” (a rating of “10”) with the quality of health care services in Lenawee County,

while 7.8% of respondents were unsure or did not provide an answer.



Demographic categories with significantly higher averages include: widowed (7.85) and age 35-44 (6.59).

The demographic category with a significantly lower average is: age 35-44 (6.59).

There was a strong correlation between responses to the statement “Rate your satisfaction with the quality of health care services in Lenawee County” and the statement “Rate your satisfaction with the availability of health care services in Lenawee County.” The higher they rated satisfaction with the quality of health care services in Lenawee County, the more likely they were to highly rate satisfaction with the availability of health care services in Lenawee County.

Availability of affordable health insurance in Lenawee County (334 respondents – 5.32 average)

Over sixteen percent (16.3%) of respondents rated the availability of affordable health insurance a “7,” while 14.0% of respondents gave a rating of “5.” Thirty-five respondents (8.8%) stated that they were “not satisfied” at all with the availability of affordable health insurance in Lenawee County, while 16.5% were unsure or provided no answer.

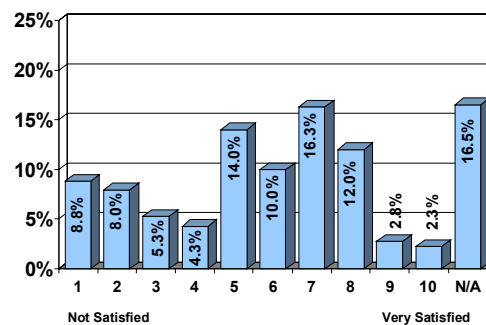


Chart 44
Availability of Affordable Health Insurance

Demographic categories with significantly higher averages include: ZIP code 49247 (6.74) and household income \$100,000 and over (6.64).

There were no demographic categories with significantly lower averages.

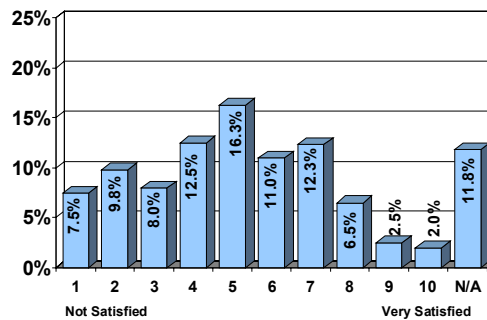
There was a strong correlation between responses to the statement “Rate your satisfaction with the availability of affordable health insurance in Lenawee County” and the statement “Rate your satisfaction with the cost of health care services in Lenawee County.” The higher they rated satisfaction with the availability of affordable health insurance in Lenawee County, the more likely they were to highly rate satisfaction with the cost of health care services in Lenawee County.



Health Care - con't.

Chart 45
Cost of Health Care Services

Cost of health care services in Lenawee County (353 respondents – 4.86 average)



When asked to rate the cost of health care services in Lenawee County, 16.3% of respondents indicated a rating of “5,” followed by 12.5% of respondents who indicated a “4” rating. Thirty respondents (7.5%) gave a rating of “1,” meaning that they were “not satisfied at all” with the cost of health care in Lenawee County.

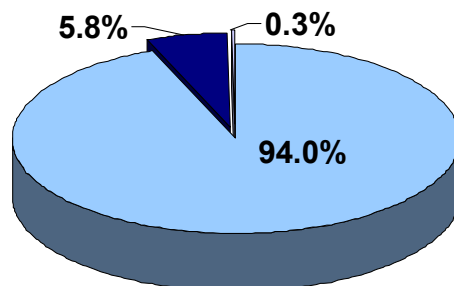
The demographic category with a significantly higher average is: ZIP code 49286 (5.80).

The demographic category with a significantly lower average is: some high school (3.53).

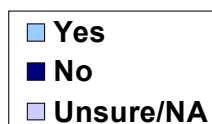
There was a strong correlation between responses to the statement “Rate your satisfaction with the cost of health care services in Lenawee County” and the statement “Rate your satisfaction with the availability of affordable health insurance in Lenawee County.” The higher they rated satisfaction with the cost of health care services in Lenawee County the more likely they were to highly rate satisfaction with the availability of affordable health insurance in Lenawee County.

Respondents were then asked several questions about their health coverage and if they have any difficulty accessing health services.

Chart 46
Have Health Coverage



A large majority of respondents, 94.0%, have some type of health coverage, such as health insurance, prepaid plans, or government plans, while 5.8% do not. One respondent was unsure if he/she has health coverage.



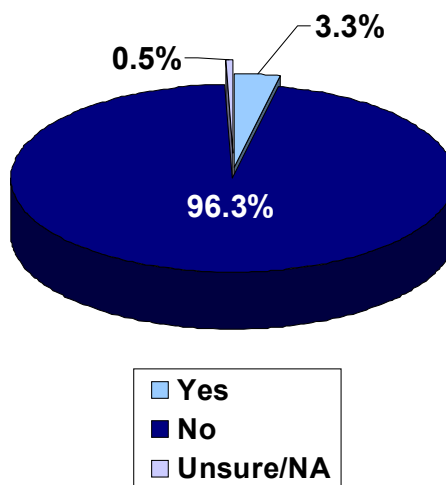
Over ninety-six percent (96.3%) of respondents indicated that they do not have any difficulty accessing basic health care.

The 13 respondents (3.3%) who stated they have difficulty accessing basic health care were asked to indicate why they felt this way. Their responses include:

5 Respondents
Cost

3 Respondents
Availability of doctors

1 Respondent
Appointment times
Don't take Medicare
No insurance
Transportation
Travel time



Health Care - con't.

Chart 47
Difficulty Accessing Basic Health Care

Almost ninety-five percent (94.8%) of respondents indicated that they do not have any difficulty accessing prescriptions, while 4.3% of respondents stated they do have difficulty.

The 17 respondents (4.3%) who stated they have difficulty accessing prescriptions were asked to indicate why they felt this way. Their responses include:

9 Respondents
Cost

3 Respondents
Insurance doesn't cover

2 Respondents
No insurance

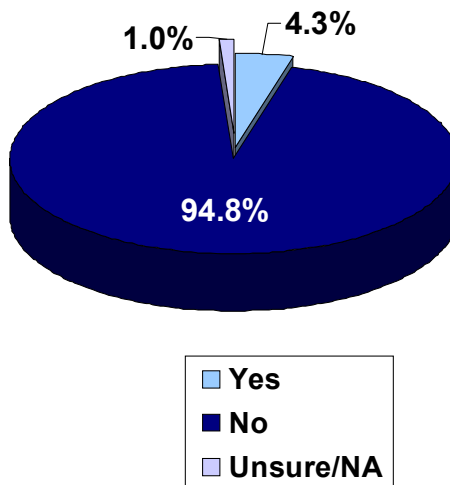


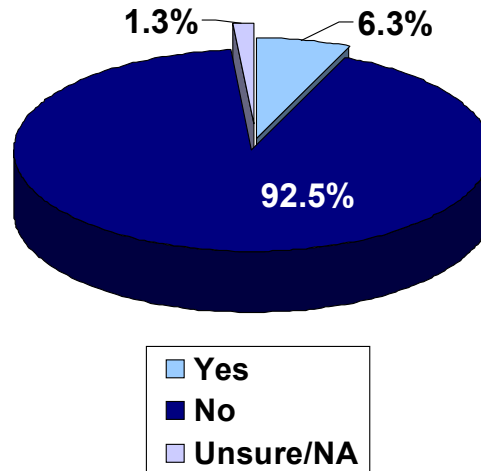
Chart 48
Difficulty Accessing Prescriptions



Health Care - con't.

1 Respondent
Doctor isn't being accommodating
Don't take Medicare
Transportation

Chart 49
Difficulty
Accessing
Dental Care



Of the 400 respondents, 92.5% do not have difficulty accessing dental care, while 6.3% indicated that they do.

Twenty-five respondents gave reasons why they have difficulty accessing dental care and their responses include:

7 Respondents
Cost
Insurance doesn't cover

4 Respondents
Availability of dentists

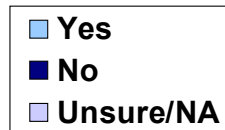
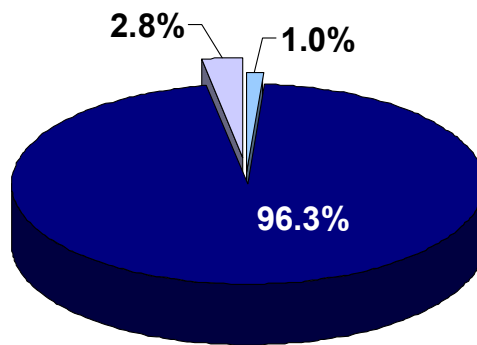
3 Respondents
No insurance

2 Respondents
Don't accept Medicaid

1 Respondent
Don't take Medicare
Transportation



When respondents were asked if they have any difficulty accessing mental health care, 1.0% indicated that they do have difficulty, while 96.3% do not. Eleven respondents (2.8%) were unsure or provided no answer.



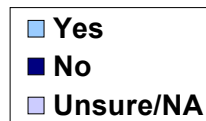
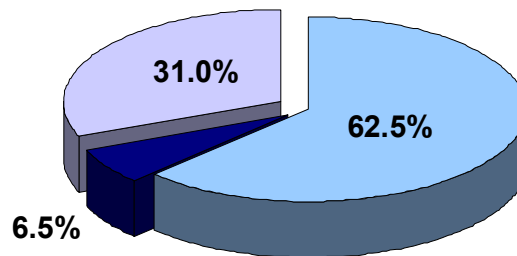
Respondents who stated that accessing mental health care is difficult mentioned the following reasons why they felt this way:

- 1 Respondent**
- Cost
- No insurance
- Not enough services
- Poor quality

Health Care - con't.

Chart 50
Difficulty Accessing Mental Health Care

Almost two-thirds (62.5%) of respondents feel that sufficient efforts are being made to provide mental health care and services in Lenawee County. Over thirty percent (31.0%) of respondents were unsure or provided no answer.



The 26 respondents (6.5%) who did not feel that sufficient efforts are being made were asked why they felt that way and their reasons include:

- 6 Respondents**
- More can be done

- 3 Respondents**
- Cost
- Need more services

- 2 Respondents**
- Funding cut
- No exposure
- Not enough services
- Poor quality

Chart 51
Efforts to Provide Mental Health Care



**Health Care -
cont.**

1 Respondent

*All about money
Don't realize what is necessary to provide or create a better system
Facilities are closing, no where for mentally ill to turn
Low priority
Not effective
See too many people not being helped*

**Chart 52
Turn to for
Help**

Turn to for help	% Respondents
Physician	45.8%
Substance Abuse Clinic/Agency	13.8%
Mental Health Clinic/Agency	13.8%
Family member	11.5%
Pastor/Clergy	6.8%
Friends/relatives/co-workers	5.8%
Crisis Line/211	3.0%
Psychologist/Psychiatrist	1.8%
Health Department	1.5%
Other	5.3%
Unsure/NA	22.0%

*Chart totals more than 100% as respondents were able to indicate more than one response.

When respondents were asked who they would turn to for help with a substance abuse or mental health concern, the most frequent response was a physician which was stated by 45.8% of respondents. Respondents also indicated that they would turn to a mental health clinic/agency (13.8%) or a substance abuse clinic/agency (13.8%). Twenty-two percent (22.0%) of respondents said that they

were unsure who they would turn to for help with a substance abuse or mental health concern or need.

Below are additional responses that were given but not included in the chart:

5 Respondents

U of M

4 Respondents

Work

2 Respondents

*Hospital
Out of county*

1 Respondent

*Catholic Service Center
Charity
CMH
Counselor
Internet/website
LifeWays
Public charity
Social services*



Respondents were then asked to rate their satisfaction with several different educational issues in Lenawee County. Respondents rated the issues on a scale from 1 to 10, with 1 being “not satisfied at all” and 10 being “very satisfied.”

An average rating was calculated for each of the responses. Therefore, an average of 5.5 would indicate that the average response was between “not satisfied at all” and “very satisfied.”

Issue	2005 Average
Your local public school district	7.24
Availability of higher education	7.15
Number of K-12 educational options	7.00

Education

Chart 53

Average Ratings - Education

Your local public school district (359 respondents – 7.24 average)

Respondents were asked to rate their satisfaction with their local public school district. Over fifty percent (50.8%) of respondents indicated a rating of “8” or higher. Ten percent (10.0%) of respondents stated that they were “very satisfied” with their local public school district. Forty-one respondents (10.3%) were unsure or provided no answer.

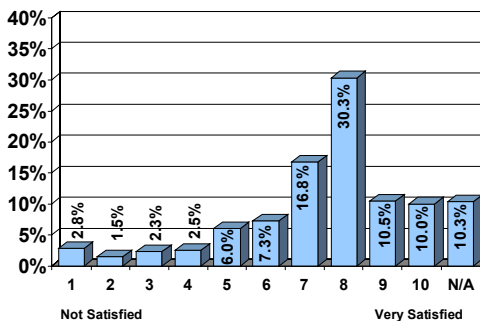


Chart 54

Local Public School District

Demographic categories with significantly higher averages include: ZIP code 49236 (8.47), age 65+ (7.70), and household income less than \$15,000 (8.14).

There are no demographic categories with significantly lower averages.

There was a strong correlation between responses to the statement “Rate your satisfaction with your local public school district” and the statement “Rate your satisfaction with the number of K-12 educational options in your community.” The higher they rated satisfaction with the local public school district in Lenawee County the more likely they were to highly rate



satisfaction with the number of K-12 educational options in Lenawee County.

Thirty-one percent (31.1%) of respondents with no children under 18 years old rated their local public school district in their community an "8."

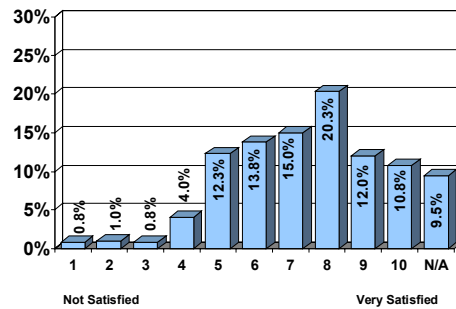
Almost twenty percent (19.3%) of respondents with no children under 18 indicated a rating of "9" or "10," while 13.9% were unsure.

Twenty-eight percent (28.3%) of respondents with children under 18 years old rated their local public school district an "8." Over twenty-three percent (23.3%) of respondents with children under 18 years old gave a rating of a "9" or "10," while only 1.7% were unsure.

Among the school districts that respondents live in, none of the school districts received a rating less than "3." Over one-quarter (26.7%) of respondents in Addison school district said that they were unsure of their satisfaction with the local public school district. Almost all of the school districts, including Addison, Britton, Columbia and Deerfield, mostly received ratings of "7" and "8." The most common rating for the Lenawee school district was an "8," with 30.3% of respondents indicating this rating.

Availability of higher education in Lenawee County (362 respondents – 7.15 average)

Chart 55
Availability of Higher Education



Of the 400 respondents, 20.3% rated the availability of higher education in Lenawee County an "8," followed by 15.0% of respondents who indicated a rating of "7." Over ten percent (10.8%) of respondents stated that they were "very satisfied" or gave a "10" rating, while 9.5% of respondents were unsure or did not provide an answer.

Demographic categories with significantly lower averages include: age 65+ (7.82), some high school (8.43), and post graduate study, but no degree (8.40).

Demographic categories with significantly lower averages include: ZIP code 49247 (5.44), ZIP code 49286 (6.48), and age 35-44 (6.68).



There was no strong correlation between responses to this statement and other statements.

Number of K-12 educational options in your community (324 respondents – 7.00 average)

When asked to rate their satisfaction with the number of K-12 educational options in their community, 18.8% of respondents indicated a rating of “8,” followed by 18.0% of respondents who indicated a rating of “7.” Nineteen percent (19.0%) of respondents were unsure or did not provide an answer.

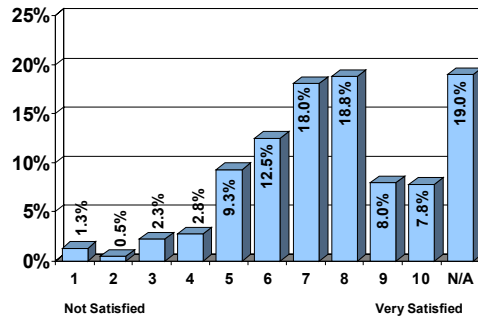


Chart 56
Number of K-12 Educational Options

Demographic categories with significantly higher averages include: widowed (7.83), age 45-64 (7.43), and household income less than \$15,000 (7.68).

Demographic categories with significantly lower averages include: age 35-44 (6.53) and associate’s degree (6.00).

There was a strong correlation between responses to the statement “Rate your satisfaction with the number of K-12 educational options in your community” and “Rate your satisfaction with your local public school district.” The higher they rated satisfaction with the number of K-12 educational options in Lenawee County, the more likely they were to highly rate satisfaction with the local public school district in Lenawee County.

Over eighteen percent (18.9%) of respondents with no children under 18 years old rated the number of K-12 options in their community an “8,” followed by 17.1% who rated it a “7.” Over fourteen percent (14.6%) of respondents with no children under 18 indicated a rating of “9” or “10,” while 24.6% were unsure.

Twenty percent (20.0%) of respondents with children under 18 years old rated the number of K-12 options in their community a “7,” followed by 18.3% who rated it an “8.” Over nine percent (9.2%) of respondents with children under 18 years old gave a rating of a “10” or “Very satisfied,” while 5.8% were unsure.



Education - con't.

Among the school districts that respondents live in, none of the school districts received less than a rating of "4." Addison, Columbia and Deerfield had large percentages of respondents who were unsure. Deerfield school district had an average rating of "5," while Addison, Britton, and Columbia all scored above average ratings. The average rating for the Lenawee school district was an "8," rated by 18.8% of respondents.

Employment

Chart 57 County of Employment

The respondents were asked several questions about employment in Lenawee County.

County	% Respondents
Lenawee	74.0%
Washtenaw	13.9%
Monroe	3.4%
Jackson	2.9%
Ohio	2.4%
Hillsdale	1.9%
Other	1.4%

The 208 respondents who are currently employed were asked to indicate which county they work in. Almost three-quarters (74.0%) of the respondents are employed in Lenawee County. Almost fourteen percent (13.9%) of respondents work in Washtenaw County and 3.4% of respondents work in Monroe County. Other responses are indicated below:

2 Respondents

Wayne County

1 Respondent

Oakland County

The next question asked the 52 respondents who do not work in Lenawee County to indicate their current job title and responsibilities. Their responses are listed below:

4 Respondents

Supervisor

3 Respondents

Nurse

Sales

Teacher

2 Respondents

Dental assistant

Manager



Receptionist
Restaurant management
Truck driver

1 Respondent

Aviation mechanic
Book store clerk
Business owner
Business owner and farmer
Childcare provider
Clerk
Community advocate, case manager
Computer graphics design, marketing
Computer technician
Hydraulic Filter Assembler
Mammogram Technician
Masonry
Medical transcriptionist
Pipe fitter
Production checker
Project director, site manager
Psychic
Real estate appraisal
Repairman
Research engineer
Roofing laborer
School counselor
Service representative
Service tech
Social worker
Superintendent bridge building
Supply Manager
Systems engineer
Warehousing

Employment-
con't.

Respondents who are employed were asked whether they had changed jobs or employment in the past three years. Over eighty percent (86.5%) of respondents said that they had not changed jobs in the past three years, while 13.5% of respondents said that they have.

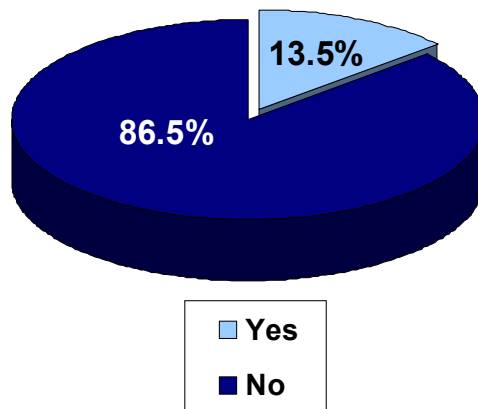


Chart 58
Changed Jobs or Employment in Past Three Years



Employment - con't.

The 28 respondents who said that they have changed jobs or employment in the past three years were asked why they changed jobs. Their answers are listed below:

5 Respondents

Wages

5 Respondents

Moved

2 Respondents

Health

Laid off

Wanted something different

1 Respondent

Budget cuts

Fired

Got a promotion

Insurance

More hours

Started own business

Student, just started job

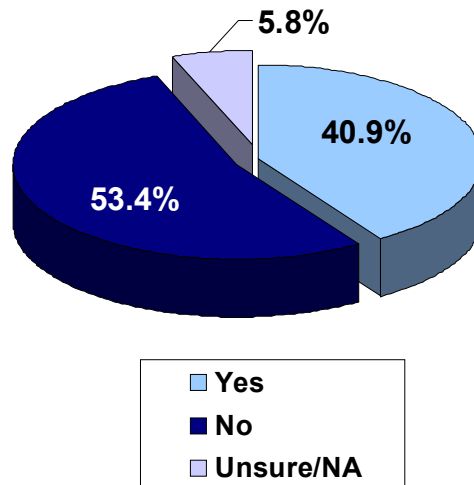
Summer work

Unemployed before

Wanted to retire, but went back

Chart 59

Employer Provides Job Related Training



Employed respondents were asked if their employer provides job related training. Under half (40.9%) of the respondents said that their employer does provide job related training, while 53.4% said that their employer does not provide training. Almost six percent (5.8%) said that they were unsure whether or not their employer provides training.



The 85 respondents who indicated that their employer provides job related training were asked what type of training their employer provides. Below are their responses:

11 Respondents

General

10 Respondents

Computer

7 Respondents

Food service

4 Respondents

Conferences

Continued education

3 Respondents

Nursing

Seminar

2 Respondents

Driving

Hands on

1 Respondent

Auto mechanical

Basic

Basic corporate and upholstery

Carpentry

Certification, staff training for waste water treatment

Changes that need to be made

Clerical

Clerical, data

CPR, first-aid

Customer service, sales

Departmental

Factory

Federal law enforcement

Finance, appraisal

Fire fighting

Health related

Industrial, trade related

Law, legal, police

Maintenance

Management, computer, components

Management, volunteer training

Mechanical and auto technology

Move upwards

Pay 75% of tuition for college classes

Power train systems

Product training, management

Rehabilitation, computer

Religious

Sales, storage, manufacturing

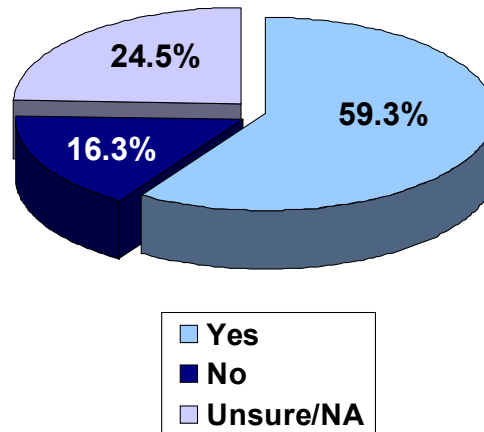
Shipping trades



Employment - con't.

Skilled labor, basic machine
 Technical
 Teeth cleaning, seminars, credits for education
 USDA
 Watch children, CPR, first-aid
 Web development
 X-ray
 Yearly training management

Chart 60
Employers
Sensitive to
Family Needs



One question asked respondents if they felt employers in Lenawee County are sensitive to family needs. More than half of respondents (59.3%) felt that employers are sensitive to family needs. Almost one-quarter of respondents (24.5%) were unsure, while 16.3% of respondents did not feel that employers are sensitive to family needs.

The 65 respondents who felt that employers are not sensitive to family needs provided the following reasons why they felt this way:

10 Respondents

No health insurance
 Only care about money

7 Respondents

Work comes first

4 Respondents

Greed
 They don't care

3 Respondents

No time off

2 Respondents

Bad experience
 Got fired
 Lack of jobs
 They could be better
 Wages

1 Respondent

Based on how much money you have
 Better jobs outside county
 Can't take sick days



Don't care about childcare
 Health insurance and low wages, can't take time for sick kids
 Insensitive to family needs
 No flextime
 No time for family
 Not flexible with young families
 Only care about money, not compassionate to workers
 Overtime is mandatory
 Personal experience
 Personal quality lacking
 There are no good employers
 Too many lay-offs
 Too many lay-offs and they prevent families from getting together
 Want to hire part-time and not pay benefits

Employment - con't.

Respondents were then asked to rate their satisfaction with employment issues in Lenawee County. Respondents rated the issues on a scale from 1 to 10, with 1 being "not satisfied at all" and 10 being "very satisfied."

An average rating was calculated for each of the responses. Therefore, an average of 5.5 would indicate that the average response was between "not satisfied at all" and "very satisfied."

Issue	2005 Average
Availability of job or technical training	5.58
Availability of living wage jobs	4.61

Chart 61
Average Ratings - Employment

Availability of job or technical training in Lenawee County (355 respondents – 5.58 average)

Over twenty percent (20.8%) of respondents rated their satisfaction with the availability of job or technical training a "5," followed by 18.8% of respondents who indicated a "6." Over thirteen percent (13.4%) of respondents rated the issue a "3" or less, while 11.3% were unsure or did not provide an answer.

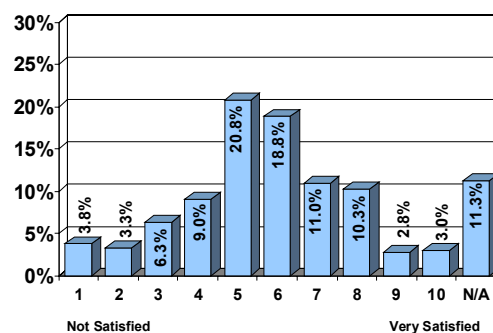


Chart 62
Availability of Job or Technical Training



Employment - con't.

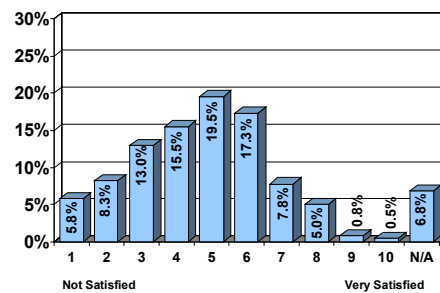
The demographic category with a significantly higher average is: household income \$25,000-\$34,999 (6.02).

Demographic categories with significantly lower averages include: ZIP code 49247 (4.47), not a home owner (4.74), age 35-44 (4.90), and American Indian/Native American (3.91).

There was no strong correlation between responses to this statement and other statements.

Availability of living wage jobs in Lenawee County (373 respondents – 4.61 average)

Chart 63
Availability of Living Wage Jobs



Over one-quarter (27.1%) of respondents rated their satisfaction with the availability of living wage jobs a "1," "2," or "3." Twenty-three respondents (5.8%) stated that they were "not satisfied at all" (a rating of "1"), while less than seven percent (6.3%) gave a rating of "8" or above. Six percent (6.8%) of respondents were unsure or did not provide an answer.

There are no demographic categories with significantly higher averages.

Demographic categories with significantly lower averages include: divorced (3.79) and American Indian/Native American (3.09).

There was no strong correlation between responses to this statement and other statements.



When asked to rate the largest barrier to employment in Lenawee County, 61.1% of respondents cited a lack of jobs. Over six percent (6.5%) of respondents felt the largest barrier to employment was job skills and training. Other responses were named by 3.7% of respondents and include:

Barriers to Employment	% Respondents
Lack of jobs	61.1%
Job skills and training	6.5%
Basic literacy and education level	4.8%
Wages	2.8%
People are lazy	2.0%
Transportation	0.8%
Other	3.7%
Unsure/NA	18.5%

2 Respondents

- Child care*
- Health concerns*
- Racism*

1 Respondent

- Access, roads to get to job*
- Age*
- Benefits and insurance*
- County beaurocrats*
- Employees expect too much*
- Labor unions*
- Rural area*
- Temp agencies*
- Too many factory jobs, not enough upper end jobs*

Employment - con't.

Chart 64
Barriers to Employment

Respondents were asked if they knew how to access assistance in finding employment if they needed to. Eighty-five percent (85.0%) of respondents answered that they do know how to access assistance, while 11.8% said that they do not. Thirteen respondents (3.3%) said that they were unsure or did not provide an answer.

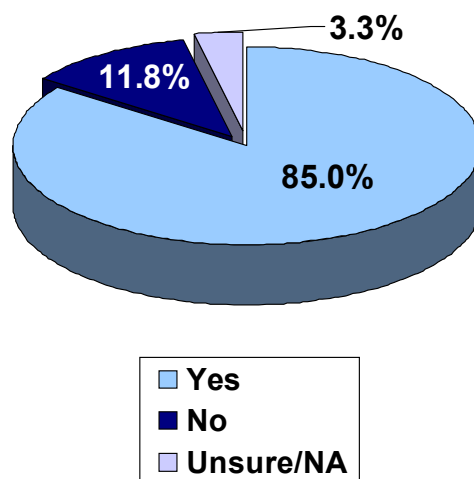
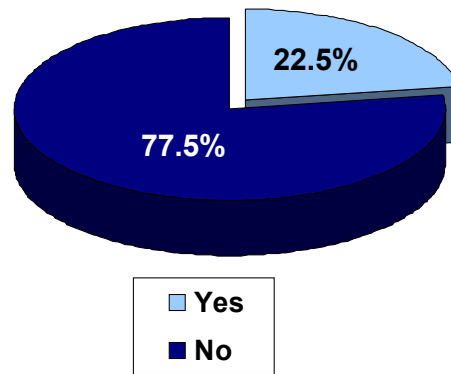


Chart 65
Access Assistance in Finding Employment

Employment - con't.

Chart 66

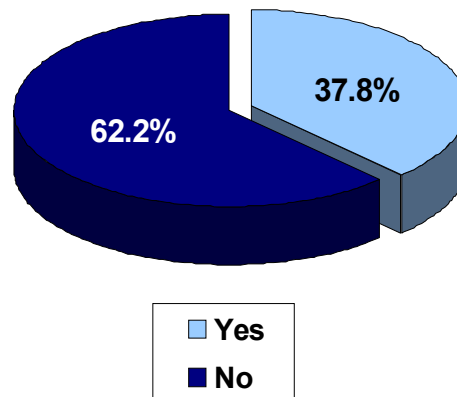
Own or Manage a Business



Respondents were asked if they own or manage a business. Seventy-seven percent (77.5%) of respondents indicated that they do not own or manage a business, while 22.5% of respondents do.

Chart 67

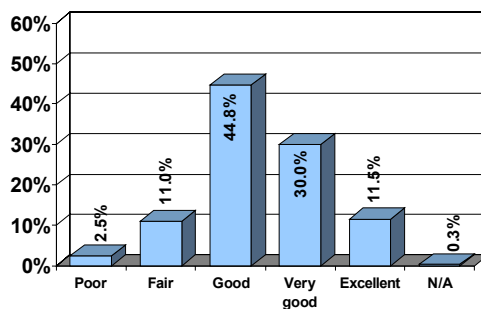
Access Assistance in Finding Employees



Respondents who own or manage a business were asked if they knew how to access assistance in finding employees. Of the 90 respondents who indicated that they own or manage a business, 62.2% said that they did not know how to access assistance in finding employees, while 37.8% said that they do.



Respondents were asked to indicate their general health. Most respondents stated that their health was good (44.8%) or very good (30.0%). Only 2.5% of respondents rated their general health as poor, while 11.5% felt their health is excellent.



Personal Health

Chart 68
General Health of Respondent

Seventy-eight percent (78.8%) of respondents indicated that they had participated in some type of exercise or physical activity in the past month, while 21.3% of respondents had not.

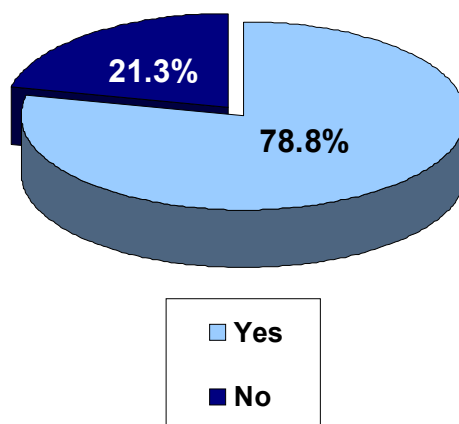


Chart 69
Exercise or Physical Activity

The next question asked respondents to indicate the last time they had a complete physical. Almost half of the respondents (44.0%) have had a complete physical within the past year.

	2005 % Respondents
Very recently (last month or two)	22.5%
Within the last year	44.0%
Within the last two years	14.0%
Over two years ago	14.5%
Never	1.3%
Unsure/NA	3.8%

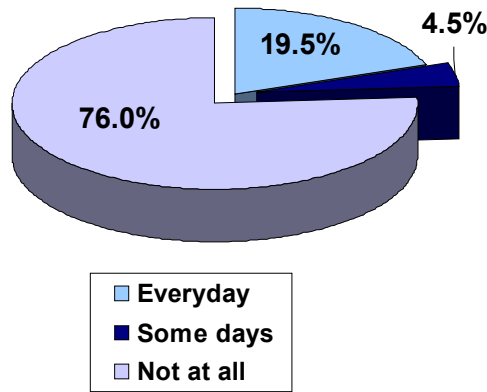
Twenty-two percent (22.5%) of respondents have had a complete physical within the last month or two. One percent (1.3%) or eight respondents have never had a complete physical, while 3.8% were unsure.

Chart 70
Last Complete Physical



Personal Health
- cont.

Chart 71
Smoke Cigarettes



Seventy-eight of the 400 respondents (19.5%) indicated that they smoke cigarettes everyday. Over four percent (4.5%) of respondents smoke on some days, while 76.0% of Lenawee County respondents stated that they do not smoke at all.

Chart 72
Five Drinks or More in Past 30 Days

Number of times	2005	
	Frequency	%
1 to 2	59	14.8%
3 to 5	11	2.8%
6 to 10	2	0.5%
11 to 15	0	0.0%
16 to 20	0	0.0%
Over 20	1	0.3%
None	325	81.3%
Unsure/NA	2	0.5%

* Responses total more than 100% due to rounding

Respondents were asked, "Considering all types of alcoholic beverages, how many times during the past 30 days did you have five or more drinks?" Over eighty percent (81.3%) of the respondents said "none," while 14.8% of respondents stated they had five or more drinks once or twice in the past 30 days.



The survey respondents were asked to rate their satisfaction with different cultural and recreational opportunities in Lenawee County. Respondents rated the services on a scale from 1 to 10, with 1 being “not satisfied at all” and 10 being “very satisfied.”

An average rating was calculated for each of the responses. Therefore, an average of 5.5 would indicate that the average response was between not satisfied at all and very satisfied.

Issue	2005 Average
Quality of parks	7.60
Quality of libraries	7.54
Recreational activities	6.81
Cultural activities	6.41

Culture and Recreation

Chart 73

Average Ratings - Culture and Recreation

The quality of parks in Lenawee County (368 respondents – 7.60 average)

Over one quarter of respondents (27.3%) indicated a rating of “8” when asked to rate their satisfaction with the quality of parks, while 18.8% of respondents stated a rating of “7.” Less than two percent (1.8%) rated the issue a “3” or below. Thirty-two respondents (8.0%) were unsure or did not provide an answer.

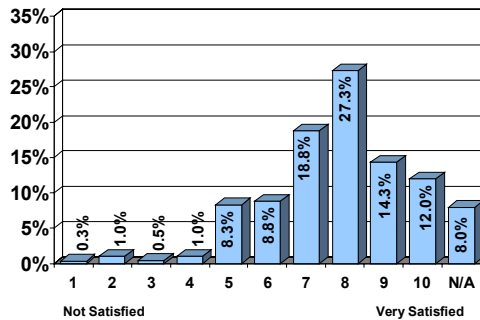


Chart 74

Quality of Parks

Demographic categories with significantly higher averages include: ZIP code 49286 (8.10) and household income less than \$15,000 (8.26).

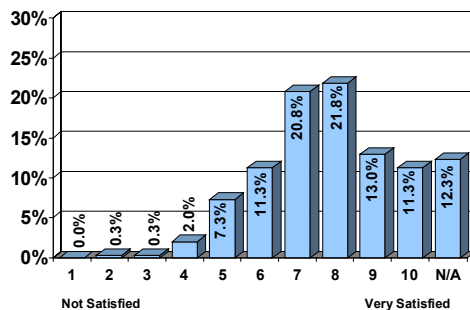
The demographic category with a significantly lower average is: ZIP code 49247 (6.55).

There was no strong correlation between responses to this statement and other statements.



Chart 75
Quality of Libraries

The quality of libraries in Lenawee County (351 respondents – 7.54 average)



Over forty-six percent (46.1%) of respondents rated their satisfaction with the quality of libraries in Lenawee County as an “8,” “9,” or “10.” Forty-five respondents (11.3%) were “very satisfied” (a “10 rating) with the quality of libraries and 49 respondents (12.3%) were unsure or provided no answer.

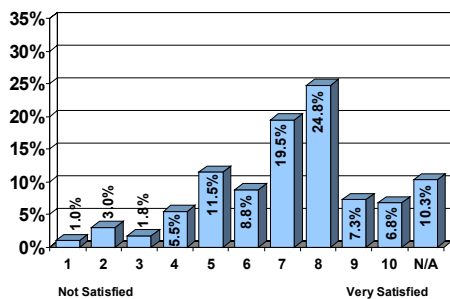
Demographic categories with significantly higher averages include: widowed (8.48) and age 65+ (8.18).

There are no demographic categories with significantly lower averages.

There was no strong correlation between responses to this statement and other statements.

Recreational activities in Lenawee County (359 respondents – 6.81 average)

Chart 76
Recreational Activities



When asked to rate their satisfaction with the recreational activities in Lenawee County, 24.8% of respondents indicated a rating of “8.” Almost twenty percent (19.5%) of respondents rated their satisfaction a “7.” Only 5.8% of respondents rated the issue a “3” or below. Forty-one respondents (10.3%) were unsure or provided no answer.

Demographic categories with significantly higher averages include: ZIP code 49286 (7.56) and African American/Black (8.20).

The demographic category with a significantly lower average is: ZIP code 49247 (5.85).



There was a strong correlation between responses to the statement “Rate your satisfaction with recreational activities in Lenawee County” and the statement “Rate your satisfaction with cultural activities in Lenawee County.” The higher they rated satisfaction with recreational activities in Lenawee County, the more likely they were to highly rate satisfaction with cultural activities in Lenawee County.

Cultural activities in Lenawee County (346 respondents – 6.41 average)

Of the 400 respondents, 72 respondents (18.3%) rated their satisfaction with cultural activities as an “8,” followed by 17.3% for a rating of “7.” Only 3.5% of respondents were “very satisfied” with the cultural activities in Lenawee County, while 13.5% of respondents were unsure or provided no answer.

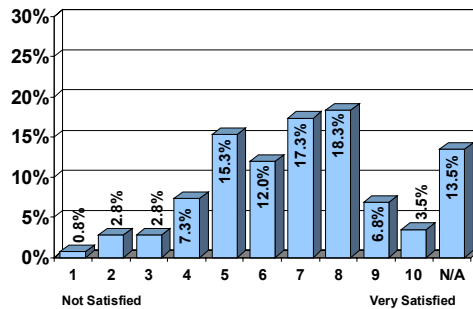


Chart 77
Cultural Activities

The demographic category with a significantly higher average is: ZIP code 49286 (7.06).

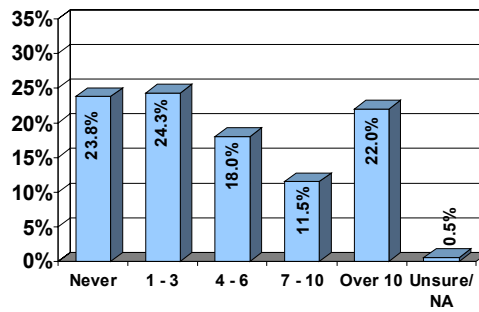
The demographic category with a significantly lower average is: household income \$35,000-\$49,999 (5.89).

There was a strong correlation between responses to the statement “Rate your satisfaction cultural activities in Lenawee County” and the statement “Rate your satisfaction with recreational activities in Lenawee County.” The higher they rated satisfaction with cultural activities in Lenawee County, the more likely they were to highly rate satisfaction with recreational activities in Lenawee County.



Culture and Recreation - con't.

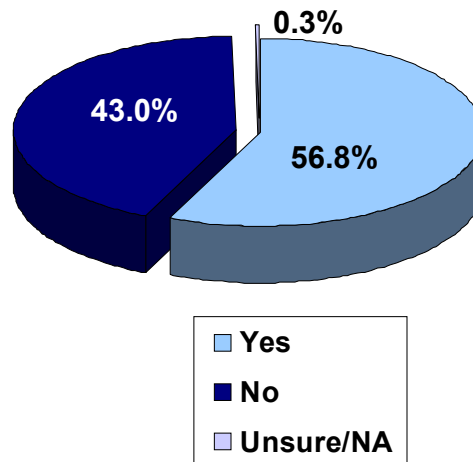
Chart 78
Visit County and City Parks



Respondents were asked to indicate how many times they visit county and city parks in their area. Over twenty-four percent (24.3%) of respondents indicated that they visit county and city parks 1 to 3 times a year, followed by 23.8% of respondents who said they have never visited their local parks. Twenty-two percent (22.0%) of respondents visit their local parks over 10 times a year.

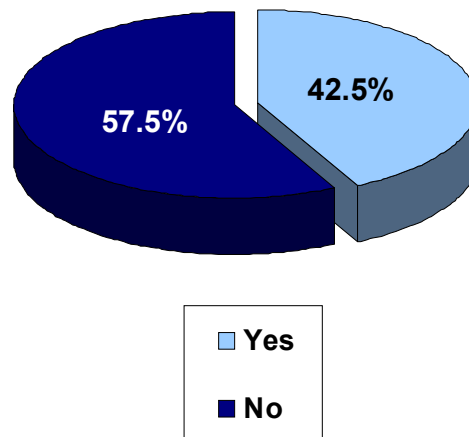
Community Involvement

Chart 79
Member of a Religious Organization



Respondents were asked, "Are you a member of, or involved with, a religious organization, religious group, church, synagogue, or mosque?" Over half of the respondents (56.8%) stated that they are a member of a religious organization, while 43.0% indicated that they are not.

Chart 80
Volunteered in Past Year



Respondents were asked, "Have you volunteered your time in the past year?" Under half of the respondents (42.5%) have volunteered their time within the past year, while 57.5% of respondents have not.



The 170 respondents who have volunteered their time in the past year were asked what type of organizations they have volunteered for. The most common response, named by 57.1% of respondents, was for a religious organization, church, synagogue, or mosque.

Respondents have also volunteered their time with schools (30.6%), service organizations (11.8%), and the Red Cross (8.8%). Twenty-eight percent (27.7%) of respondents named other organizations, which are listed below:

Organizations	2005 % Respondents
Religious organization	57.1%
Schools	30.6%
Service organizations	11.8%
Red Cross	8.8%
Soup kitchen	1.8%
Other	27.7%
Unsure/NA	0.6%

*Chart totals more than 100% as respondents were able to indicate more than one response.

Community Involvement - con't.

Chart 81 Where Respondents Have Volunteered

3 Respondents

*Hospital
Humane Society
Relay for Life*

2 Respondents

*American Cancer Society
Community
Fire department
Food drive*

1 Respondent

*Band
Boy Scouts
Businesses
Care Pregnancy Center
Cemetery
Clubs
Conservation
Drama Troop
Foster parents
Free lance
Goodwill, Humane Society
Habitat for Humanity
Habitat for Humanity, Humane Society
Health care
Heart Association
Jaycees
Junior Achievement
Juvenile detention
Kiwanis
Museums
Neighbors, Hospice*



**Community
Involvement -
con't.**

*Nursing home
Nursing, Hospice
Political campaigns
Red Hat Society
Salvation Army
Senior citizens
Special Olympics
U.S. Coast Guard
United Way
Veterans*



Based on the survey results obtained in this report, the following conclusions have been developed.

Top Issues. When asked to rate the quality of life in Lenawee County, 87.3% of respondents rated it “good,” “very good,” or “excellent.” The results to this question were distributed in a bell curve shape, with the highest percentage of respondents in the “good” category at 45.0%. Only 16.0% rated the quality of life “fair” or “poor.” Single residents and those with less than a high school education gave significantly lower ratings for the question.

When asked the top three issues facing Lenawee County residents, employment, schools/education, and roads were the top three issues named. When asked, “What do you think is the most significant issue facing *your* family?” the top responses were employment, schools/education, and health care. For both questions, employment appears to be an issue of concern both personally and for the community at large.

Services. Respondents were asked to rate five services on a scale from being “not satisfied” to “very satisfied.” The highest rated services were rescue and fire services, police services, and snow removal. The lowest rated services were public transportation and the condition of roads.

Crime & Substance Abuse. The seriousness of substance abuse in Lenawee County was rated more of a problem than crime. In 2005, crime was rated 4.66 (on a 1 to 10 scale, where 1 indicates “not a serious problem” to 10 indicating “a very serious problem”), while drug or substance abuse received a 6.05 rating.

When asked about efforts to provide substance abuse care and services in Lenawee County, nearly two-thirds of the respondents stated sufficient efforts were being made; however, nearly one out of every four people were unsure.



Conclusions - con't.

Family Issues. Respondents were asked to rate the seriousness of three family issues: parents not staying together, single parent households, and unwed pregnancies. All three received a similar rating between 5.44 and 5.85 on a 1 to 10 scale (where 1 indicates “not a serious problem” to 10 indicating “a very serious problem”). In addition, the ratings for all three issues all correlated with each other, suggesting that survey respondents felt the issues were similar in the level of seriousness.

Housing. Two statements on the survey asked respondents how satisfied they were with the quality of housing and the availability of affordable housing. The majority of respondents rated both of these statements as satisfied or very satisfied. Only 1.5% of respondents said they were not satisfied with the quality of housing, and 1.8% said they were not satisfied with the availability of affordable housing.

Health Care. Respondents were asked to rate four aspects of health care in Lenawee County. For two of the four aspects: availability of health care services (7.22) and quality of health care services (7.11), the ratings were similar. Ratings for the cost of health care services (4.86) and availability of affordable health insurance (5.32) were significantly lower. The rating scale was 1 indicating “not satisfied at all” to 10 indicating “very satisfied,” so the lower the score, the less satisfied respondents were.

Most survey respondents (94.0%) have health coverage of some type, such as health insurance, prepaid plans, or government plans. Most respondents had no difficulty accessing basic health care, prescriptions, dental care, or mental health care. The most difficulty was in accessing dental care where 25 of the 400 respondents (6.3%) said they had difficulty, and most named cost or no insurance as the reason why.

Education. The 2005 Lenawee Community Survey found that most respondents rated K-12 educational options, their local public school district, and the availability of higher education between 7.00 and 7.24 on a 1 to 10 scale, where 1 indicates “not satisfied at all” and 10 indicating “very satisfied.” There were some differences in ratings by age of respondent.



Employment. Nearly three-quarters of the survey respondents who were employed worked in Lenawee County, with about fourteen percent working in Washtenaw County. Thirteen percent of the respondents who were employed said they had changed jobs in the past three years, with the top reasons of wages and moving. Just over forty percent of employed survey respondents said their employer provides some type of job related training, although fourteen percent were unsure.

Many of the respondents rated the availability of job or technical training and the availability of living wage jobs as not satisfied. Respondents least satisfied with the availability of job or technical training were people who lived in ZIP code 49247, and those age 35-44.

Eighty-five percent of the respondents said they knew how to access assistance in finding employment if they needed to, while only 37.8% of business managers or owners said they knew how to access assistance in finding employees.

Health. Most survey respondents have had a physical in the past two years. In 2005, 80.5% of the survey respondents had a complete physical within the past two years. Seventy-eight percent of survey respondents said they have participated in a physical activity or exercise like running, calisthenics, golf, gardening, or walking for exercise.

Culture and Recreation. Satisfaction ratings for the quality of libraries, quality of parks, and recreational activities were generally high from most respondents. The availability of cultural activities was rated at just over halfway between not satisfied and very satisfied. In 2005, 22.0% of survey respondents stated they visited county or city parks 10 or more times in the past year, while 23.8% of respondents did not visit any county or city park in the past year.

Volunteerism. The percentage of Lenawee Community Survey respondents who have volunteered their time in the past year was 42.5%. The most often named organizations where respondents have volunteered were religious organizations, schools, and service organizations.





2005 Lenawee Community Survey 73

Perspectives Consulting Group, Inc. 77





Lenawee Community Report Card 2005

Tel. Number: _____
 Interviewer: _____
 Date/Time: _____

Good Evening, my name is _____ from Perspectives Consulting Group, and we are talking with Lenawee County residents to find out what you think about the quality of life in Lenawee County. I won't ask for your name, address, or other personal information that can identify you.

Any information you give me will be confidential.

Are you 18 years old or older? Yes - Continue No - May I speak to someone 18 or older please? (CODE: ADULT)
 Do you live in Lenawee County? Yes - Continue No

Final 5-22-05

1. How would you rate the quality of life in Lenawee County?
 (Read Choices) [1] Poor [2] Fair [3] Good [4] Very Good
 [5] Excellent [6] Unsure/NA

What do you think are the three most significant issues facing Lenawee County residents? (Do NOT read choices)

2. Top Issue – Most Important: _____

3. Second Issue – Second Most Important: _____

4. Third Issue – Third Most Important: _____

- [1] Child abuse/neglect [2] Child care [3] Crime
- [4] Employment [5] Health care [6] Housing
- [7] Hunger [8] Mental health [9] Poverty
- [10] Schools/education [11] Senior citizens concerns
- [12] Substance abuse [13] Teen pregnancy [14] Transportation
- [15] Violence/rape [16] Youth concerns
- [17] Other _____
- [18] Unsure/NA

5. What do you think is the most significant issue facing your family? (Do NOT read choices)

- [1] Child abuse/neglect [2] Child care [3] Crime
- [4] Employment [5] Health care [6] Housing
- [7] Hunger [8] Mental health [9] Poverty
- [10] Schools/education [11] Senior citizens concerns
- [12] Substance abuse [13] Teen pregnancy
- [14] Transportation [15] Violence/rape [16] Youth concerns
- [17] Other _____
- [18] Unsure/NA

On a scale from 1 to 10 with 1 being "not a serious problem" to 10 being "a very serious problem," how would you rate the following issues in Lenawee County...

	1 - Not serious	10 - Very serious	11 - Unsure/NA
6. Crime	[1] [2] [3] [4] [5] [6] [7] [8] [9] [10] [11]		
7. Drug or substance abuse	[1] [2] [3] [4] [5] [6] [7] [8] [9] [10] [11]		
8. Parents not staying together	[1] [2] [3] [4] [5] [6] [7] [8] [9] [10] [11]		
9. Unwed pregnancies	[1] [2] [3] [4] [5] [6] [7] [8] [9] [10] [11]		
10. Single parent households	[1] [2] [3] [4] [5] [6] [7] [8] [9] [10] [11]		

On a scale from 1 to 10 with 1 being "not satisfied at all" to 10 being "very satisfied," how would you rate your satisfaction with...

	1 - Not satisfied at all	10 - Very satisfied	11 - Unsure/NA
11. Rescue and fire services in Lenawee County	[1] [2] [3] [4] [5] [6] [7] [8] [9] [10] [11]		
12. Police services in Lenawee County	[1] [2] [3] [4] [5] [6] [7] [8] [9] [10] [11]		
13. Condition of road surfaces in Lenawee County	[1] [2] [3] [4] [5] [6] [7] [8] [9] [10] [11]		
15. Snow removal in Lenawee County	[1] [2] [3] [4] [5] [6] [7] [8] [9] [10] [11]		
16. Public transportation in Lenawee County	[1] [2] [3] [4] [5] [6] [7] [8] [9] [10] [11]		
17. The quality of parks in Lenawee County	[1] [2] [3] [4] [5] [6] [7] [8] [9] [10] [11]		
18. Recreational activities in Lenawee County	[1] [2] [3] [4] [5] [6] [7] [8] [9] [10] [11]		
19. The quality of libraries in Lenawee County	[1] [2] [3] [4] [5] [6] [7] [8] [9] [10] [11]		
20. Cultural activities in Lenawee County (Ex. Music, theatre, arts)	[1] [2] [3] [4] [5] [6] [7] [8] [9] [10] [11]		
21. Availability of health care services in Lenawee County	[1] [2] [3] [4] [5] [6] [7] [8] [9] [10] [11]		
22. Quality of health care services in Lenawee County	[1] [2] [3] [4] [5] [6] [7] [8] [9] [10] [11]		
23. Cost of health care services in Lenawee County	[1] [2] [3] [4] [5] [6] [7] [8] [9] [10] [11]		
24. Availability of affordable health insurance	[1] [2] [3] [4] [5] [6] [7] [8] [9] [10] [11]		
25. Do you have any kind of health coverage, including health insurance, prepaid plans such as HMOs, or government plans such as Medicare?	[1] Yes [2] No [3] Unsure/NA		
Do you have any difficulty accessing health services such as:			
26. Basic Health Care	[1] Yes , why _____ [2] No [3] Unsure/NA		
27. Prescriptions	[1] Yes , why _____ [2] No [3] Unsure/NA		
28. Dental Care	[1] Yes , why _____ [2] No [3] Unsure/NA		
29. Mental Health Care	[1] Yes , why _____ [2] No [3] Unsure/NA		

30. Substance Abuse Treatment Service	[1] Yes , why _____ [2] No [3] Unsure/NA
31. Do you feel employers in Lenawee County are sensitive to family needs?	[1] Yes [2] No, why _____ [3] Unsure/NA
31A. Do you know how to access assistance in finding employment if you needed to?	[1] Yes [2] No [3] Unsure/NA
31B. Do you own or manage a business? If so, do you know how to access assistance in finding employees?	[1] Do not own or manage a business [2] Yes [3] No [4] Unsure/NA
32. Do you feel sufficient efforts are being made in Lenawee County to provide substance abuse care and services?	[1] Yes, efforts are sufficient [2] No, efforts are not sufficient because _____ [3] Unsure
33. Do you feel sufficient efforts are being made in Lenawee County to provide mental health care and services?	[1] Yes, efforts are sufficient [2] No, efforts are not sufficient because _____ [3] Unsure
34. Who would you turn to for help with a substance abuse or mental health concern or need? (Do NOT read choices/ Please check all that apply)	[1] Crisis Line/211 [2] Internet/web site [3] Family member [4] Friends/relatives/co-workers [5] Mental Health Clinic/Agency [6] Physician [7] Pastor/Clergy [8] Psychologist/Psychiatrist [9] School Counselor [10] Substance Abuse Clinic/Agency [11] Other _____ [12] Unsure

On a scale from 1 to 10 with 1 being "not satisfied at all" to 10 being "very satisfied," how would you rate your satisfaction with...

	1 - Not satisfied at all	10 - Very satisfied	11 - Unsure/NA
35. Your local public school district	[1]	[2] [3] [4] [5] [6] [7] [8] [9] [10]	[11]
36. Number of K-12 educational options in your community	[1]	[2] [3] [4] [5] [6] [7] [8] [9] [10]	[11]
37. Availability of higher education in Lenawee County	[1]	[2] [3] [4] [5] [6] [7] [8] [9] [10]	[11]
38. Availability of jobs that pay a sufficient wage to support the basic needs of a worker and their dependents in Lenawee County	[1]	[2] [3] [4] [5] [6] [7] [8] [9] [10]	[11]
39. Availability of job or technical training in Lenawee County	[1]	[2] [3] [4] [5] [6] [7] [8] [9] [10]	[11]
40. Quality of housing in Lenawee County	[1]	[2] [3] [4] [5] [6] [7] [8] [9] [10]	[11]
41. Availability of affordable housing to fit your needs	[1]	[2] [3] [4] [5] [6] [7] [8] [9] [10]	[11]
42. Do you think the cost of living in Lenawee County is: (Read choices)	[1] Very low [2] Slightly low [3] Average [4] Slightly high [5] Very high [6] Unsure/NA		
43. What do you feel is the largest barrier to employment in Lenawee County? (If necessary READ CHOICES, Check ONE)	[1] Basic literacy and education level [2] Child care [3] Health concerns [4] Job skills and training [5] Transportation [6] Other _____ [7] Unsure/NA [8] Lack of jobs		
44. Do you use child care regularly?	[1] Yes [2] No (Skip to question #49)	[3] Unsure/NA	

On a scale from 1 to 10, with 1 meaning "poor" and 10 meaning "excellent," how would you rate the...

	1 - Poor	10 - Excellent	11 - Unsure/NA
45. Availability of open child care slots _____	[1]	[2] [3] [4] [5] [6] [7] [8] [9] [10]	[11]
46. Availability of day care (ex., hours of operation and location)	[1]	[2] [3] [4] [5] [6] [7] [8] [9] [10]	[11]
47. Affordability of day care in Lenawee County _____	[1]	[2] [3] [4] [5] [6] [7] [8] [9] [10]	[11]
48. Overall quality of child care in Lenawee County _____	[1]	[2] [3] [4] [5] [6] [7] [8] [9] [10]	[11]

Are you a member of, or involved with, any of the following groups or organizations:

49. Religious organization, religious group, church, synagogue, or mosque	[1] Yes [2] No [3] Unsure/NA
52. Have you volunteered your time in the past year?	[1] Yes [2] No (Skip to Q#55) [3] Unsure/NA (Skip to Q#55)
53. For which types of organizations have you volunteered? (Do NOT read choices/Check all that apply)	[1] Religious Org, religious group, church, synagogue, or mosque [2] Red Cross [3] Service organizations [4] Soup Kitchen [5] Schools [6] Special Olympics [7] Other _____ [8] Unsure/NA
55. How often do you visit county and city parks in your area? (Read choices)	[1] Never [2] 1 to 3 times/ year [3] 4 to 6 times/ year [4] 7 to 10 times/ year [5] Over 10 times/ year [6] Unsure/NA
56. Would you say your general health is: (Read choices)	[1] Poor [2] Fair [3] Good [4] Very Good [5] Excellent [6] Unsure/NA
57. During the past month, other than your regular job, did you participate in any physical activities or exercises such as running, calisthenics, golf, gardening, or walking for exercise?	[1] Yes [2] No [3] Don't know/Not sure [4] Refused/NA
58. When was the last time you had a complete physical? (Read choices)	[1] Never [2] Over two years ago [3] Within the last two years [4] Within the last year [5] Very recently (last month or two) [6] Unsure/NA

60. Do you currently smoke cigarettes every day, some days, or not at all?

[1] Every day [2] Some days [3] Not at all
[4] Refused/NA

61. Considering all types of alcoholic beverages, how many times during the past 30 days did you have five or more drinks?

[1] None [2] Number of times _____ [3] Unsure/NA

For statistical purposes only:

62. How long have you lived in Lenawee County?

[1] Less than 1 year [2] 1to 3 years [3] 4 to 6 years
[4] 7 to 10 years [5] 11to 20 years [6] More than 21years
[7]Unsure

63. What is your ZIP code?

[1] Refused/NA [2] Other _____

63A. What school district do you live in?

[1] Refused/NA [2]Other, list district _____

64. Are you single, married, widowed, divorced or separated?

[1] Single [2] Married [3] Widowed
[4] Divorced [5] Separated [6] Refused/NA

65. Is your home owned by you or a member of your household?

[1] Yes [2] No [3] Unsure/NA

66. How many children do you have under the age of 18?

67. Is your age... (Read choices)

[1] 18-34 [2] 35-44 [3] 45-64 [4] 65+ [5] Unsure/NA

68. What is the highest level of education you have completed?

[1] 8th grade [2] Some high school
[3] High school graduate [4] Some college, no degree
[5] Associate's degree [6] Bachelor's degree
[7] Post graduate study, but no degree
[8] Graduate or professional degree
[9] Other _____ [10] Unsure/NA

69. What is your current employment status? (Read choices if necessary)

[1] Currently employed full-time [2] Currently employed part-time
[3] Homemaker – Skip to Q 72 [4] Retired – Skip to Q 72
[5] Student – Skip to Q 72
[6] Unemployed, but seeking work – Skip to Q 72
[7] Unemployed, not seeking work – Skip to question 72
[8] Unsure/NA

70. If employed, what county do you work in?

[1] Jackson County [2] Washtenaw County (Ann Arbor Area)
[3] Calhoun County [4] Hillsdale County [5] Ingham County
[6] Other _____ [7] Refused/NA–Skip to Q71A
[8] Monroe County [9] Branch County
[10] Lenawee CountySkip to Q71A
[11] Eaton County [12] Ohio

71. If working outside of Lenawee County, what is your job title and responsibilities?

[1] _____
[2] Refused/NA

71A. Have you changed jobs or employment in the past three years?

[1] Yes, changed jobs - WHY? _____
[2] No did not change jobs [3] Refused/NA

71B. Does your employer provide job related training

[1] Yes, what type of training _____
[2] No training provided [3] Unsure/NA

72. What is your primary ethnic background? (If they hesitate, read choices)

[1] White/Caucasian [2] African American/Black
[3] Hispanic [4] Asian or Pacific Islander
[5] American Indian/Native American
[6] Other _____ [7] Unsure/NA

73. What range best represents your total household income? (Read choices)

[1] Less than \$15,000 [2] \$15,000 - \$24,999
[3] \$25,000 - \$34,999 [4] \$35,000 - \$49,999
[5] \$50,000 - \$74,999 [6] \$75,000 - \$99,999
[7] \$100,000 and over [8] Refused/NA

Thank you for participating in this survey. We appreciate the time you have taken to give us your opinion on the quality of life in Lenawee County.

76. Gender Determine by voice:

[1] Male [2] Female



Founded in 1987, Perspectives Consulting Group, Inc. provides market research and strategic planning services to businesses and organizations throughout the United States. Using state-of-the-art market research techniques including focus groups, telephone/mail surveys, interviews and customer response systems, Perspectives Consulting Group, Inc. obtains the information necessary to make efficient and effective decisions and plan for the future. Perspectives Consulting Group, Inc. offers a full-range of planning services including strategic planning and feasibility studies that are essential to succeed in today's marketplace. Our primary focus is meeting the needs of nonprofit organizations, educational institutions, governmental agencies, religious organizations, and United Ways.



We firmly believe and practice the following guiding philosophies:

- To provide the client with what they need, when they need it.
- To follow the simple process of listening, planning, researching, analyzing, evaluating and reporting for each client and project.
- To treat each client's situation as unique and individual, providing the best combination of services to meet the client's needs.
- To maintain a state of involvement that allows clear, unbiased, objectivity that insures and protects the confidentiality of the client's situation.

For more information, contact us at:

Perspectives Consulting Group Inc.
P.O. Box 496
Paw Paw, MI 49079
Phone: (269) 657-5400 / (800) 724-9994
Fax: (269) 657-0500
info@perspec.com
www.perspec.com



