

MICHIGAN DEPT. OF ENERGY, LABOR & ECON. GROWTH/LABOR MARKET ANALYSIS - SOUTH CENTRAL MICHIGAN
CIVILIAN LABOR FORCE ESTIMATES
By Place of Residence/Seasonally Unadjusted. August, 2009 **

Areas	CIVILIAN LABOR FORCE					EMPLOYMENT					UNEMPLOYMENT RATES		
	August 2009	July 2009	August 2008	Monthly Change	Annual Change	August 2009	July 2009	August 2008	Monthly Change	Annual Change	Aug. 09	July 09	Aug. 08
Jackson MSA	74,900	76,200	76,800	-1,300	-1,900	63,600	64,000	69,900	-400	-6,300	15.1	16.0	9.1
Hillsdale Co.	21,325	21,750	21,125	-425	200	17,525	17,400	18,800	125	-1,275	17.8	20.0	11.0
Lenawee Co.	47,625	48,725	48,375	-1,100	-750	39,775	39,875	43,225	-100	-3,450	16.5	18.2	10.7
Michigan	4,876,000	4,943,000	4,968,000	-67,000	-92,000	4,158,000	4,172,000	4,543,000	-14,000	-385,000	14.7	15.6	8.6
U.S.A.*	154,897	156,255	155,387	-1,358	-490	140,074	141,055	145,909	-981	-5,835	9.6	9.7	6.1

* Expressed in thousands; ** All labor force and employment numbers are rounded to the nearest 25 for counties, 100 for MSAs, and 1,000 for the State and the U.S.

August Jobless Rates Record Seasonal Declines in All Regional Counties

August jobless rates were down seasonally in Southwest Michigan. These declines occurred due to two typical events: 1) recalls of auto industry workers who were temporarily laid off during July for model changeover plant retooling; 2) the initial withdrawal of youth from the summer workforce. Also in August, summer agricultural jobs rise in some counties (e.g., St. Joseph), and can represent a substantial boost. Employment was up seasonally in half of the regional counties in August.

Labor Force Mostly Down Over the Month and Over the Year

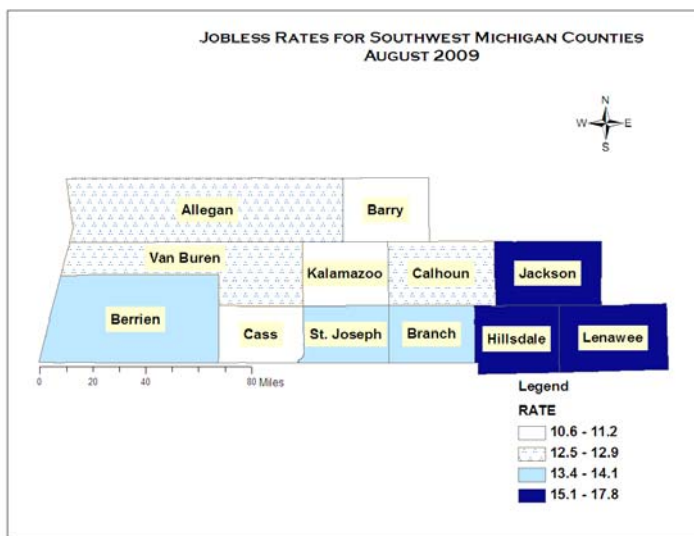
Labor force was down over the month in almost all twelve regional counties, with the exception of St. Joseph County (+825). Labor force declines ranged from -100 in Van Buren County to -1,300 in Jackson County.

Over the year, labor force either declined or remained unchanged in almost all regional counties, with the exception of Hillsdale County (+200). Branch County's labor force was flat over the year. Labor force reductions over the year ranged from -150 in St. Joseph to -3,400 in Kalamazoo County.

Employment Up in Half of Regional Counties Over the Month but Down Substantially in All Counties Over the Year

August employment by place of residence increased seasonally in half of the regional counties (Branch, Calhoun, Hillsdale, Kalamazoo, St. Joseph, and Van Buren). St. Joseph County recorded the largest employment gain in August (+1,375 or 5.2 percent) because of additional agricultural employment. The job gain in Battle Creek was partially due to the opening of a tribal owned casino during the month. Auto workers that were temporary laid off in July were recalled in August. Some local areas gained jobs in leisure and hospitality (restaurant, hotels, etc.)

Over the year, employment sank in all area counties, ranging from -1,100 in Branch to -8,825 in Kalamazoo County. The average rate of employment decline over the year in August was a little over seven percentage points.



Jobless Rates Down Seasonally over the Month but Substantially Up over the Year

Unemployment rates fell seasonally in August by an average of 1.1 percentage points in almost all twelve regional counties, with the exception of Cass County whose jobless rate remained unchanged. Nine regional counties recorded lower rates than the statewide rate of 14.7 percent in August (Barry, Cass, Kalamazoo, Calhoun, Van Buren, Allegan, Berrien, St. Joseph, and Branch). The remaining three regional counties (Jackson, Lenawee, and Hillsdale) registered higher jobless rates than the state.

Unemployment rates continued to set new high records since the early 1980s for the month of August. Jobless rates jumped over the year at an average of 5.1 percentage points. Hillsdale County recorded the highest jobless rate increase over the year (+6.8 percentage points), followed by Jackson (+6.0) and Lenawee (+5.8).

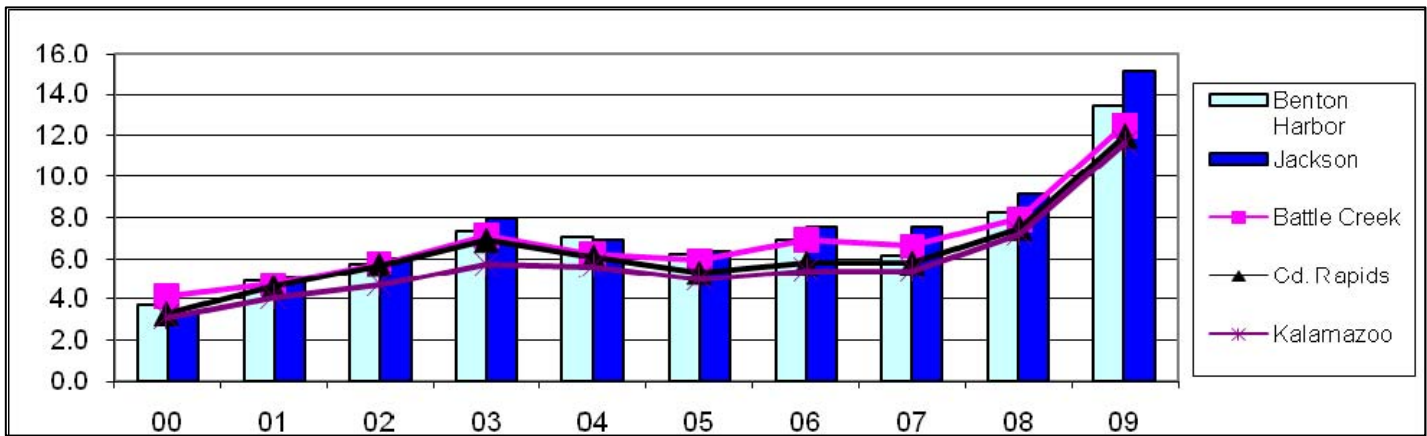
Local MSAs August Unemployment Rates Since 2000

From August 2000 to August 2009, jobless rates escalated in the Jackson (+11.8 percentage points), Niles-Benton Harbor (+9.7), Grand Rapids (+8.7), Kalamazoo (+8.5), and Battle Creek (+8.4) metro areas.

Year \ Areas	00	01	02	03	04	05	06	07	08	09
Jackson	3.3	5.0	6.0	7.9	6.9	6.3	7.5	7.5	9.1	15.1

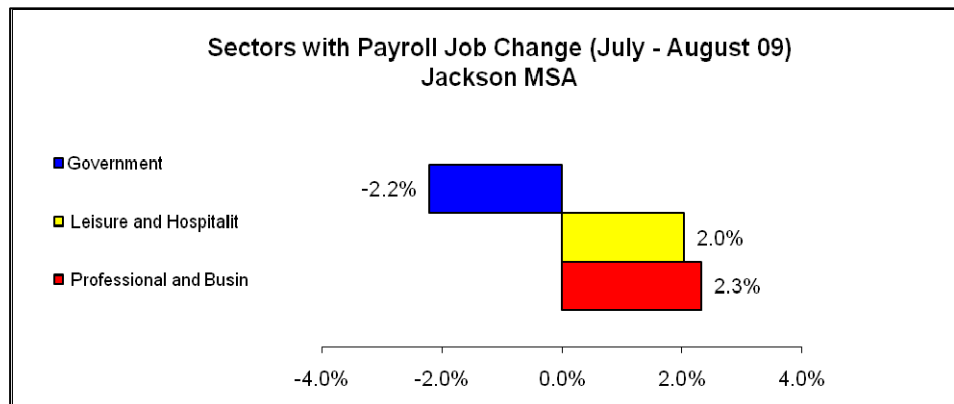
August unemployment rates rose from 2000 to 2003, fell in 2004-05; rose again in 2006-08, and then jumped sharply in 2009 due primarily to troubles in the auto industry. The current year continues to set record high unemployment rates since the 1980s.

Comparing the Trend of Local MSAs' August Unemployment Rates Since 2000



Payroll jobs in the Jackson MSA (Jackson County) were estimated at 53,400 in August (flat from July). The gain of 100 jobs each in professional and business services and in leisure and hospitality was exactly offset by a loss of 200 jobs in local government. Employment in all other sectors remained unchanged over the month.

Compared to August 2008, payroll job levels in most industries either declined or remained unchanged. Manufacturing employment plunged by 1,400 over the year. Leisure and hospitality and professional and business services each cut 600 jobs over the year. Employment in retail trade was down by 500, while construction lost 400 jobs. Overall payroll employment in Jackson was 3,700 (or -6.5%) below last year's August level.





310 W. Bacon Street, Hillsdale, MI 49242
517-437-0990

www.scmw.org



South Central Michigan MSA Payroll Employment - August 2009

Jackson MSA	August 2009	July 2009	August 2008	Monthly Change	Monthly % Change	Annual Change	Annual % Change
Total Nonfarm	53,400	53,400	57,100	0	0.0%	-3,700	-6.5%
Mining, Logging, and Construction	1,700	1,700	2,100	0	0.0%	-400	-19.0%
Manufacturing	7,700	7,700	9,100	0	0.0%	-1,400	-15.4%
Trade, Transportation, Utilities	11,300	11,300	12,000	0	0.0%	-700	-5.8%
Information	500	500	500	0	0.0%	0	0.0%
Financial Activities	1,800	1,800	1,900	0	0.0%	-100	-5.3%
Professional and Business	4,400	4,300	5,000	100	2.3%	-600	-12.0%
Educational and Health	9,400	9,400	9,600	0	0.0%	-200	-2.1%
Leisure and Hospitality	5,000	4,900	5,600	100	2.0%	-600	-10.7%
Other Services	2,800	2,800	2,800	0	0.0%	0	0.0%
Government	8,800	9,000	8,500	-200	-2.2%	300	3.5%

South Central Michigan Works! Agency Local Area Employment Data - 2009

	January	February	March	April	May	June	July	August	September	October	November	December	Ann Avg
South Central Michigan													
Labor force	143,925	143,775	144,025	142,700	144,475	148,250	146,650	143,875					144,700
Employment	123,975	123,550	122,800	122,700	121,875	123,050	121,300	120,925					122,525
Unemployed Rate	19,925	20,225	21,225	20,000	22,575	25,175	25,350	22,950					22,175
	13.8	14.1	14.7	14.0	15.6	17.0	17.3	15.9					14.2
Hillsdale													
Labor force	21,275	21,125	21,425	21,100	21,475	22,175	21,750	21,325					21,450
Employment	17,600	17,550	17,575	17,625	17,500	17,775	17,400	17,525					17,575
Unemployed Rate	3,675	3,575	3,875	3,475	3,975	4,400	4,350	3,800					3,900
	17.3	17.0	18.0	16.4	18.5	19.9	20.0	17.8					18.1
Jackson													
Labor force	74,400	74,500	74,400	73,600	74,700	76,300	76,200	74,900					74,900
Employment	65,400	65,100	64,500	64,200	64,100	64,500	64,000	63,600					64,400
Unemployed Rate	9,000	9,400	10,000	9,400	10,600	11,800	12,200	11,300					10,400
	12.1	12.7	13.4	12.7	14.1	15.5	16.0	15.1					14.0
Lenawee													
Labor force	48,275	48,150	48,175	48,025	48,300	49,775	48,725	47,625					48,375
Employment	40,975	40,950	40,775	40,850	40,250	40,825	39,875	39,775					40,525
Unemployed Rate	7,300	7,200	7,425	7,175	8,050	8,925	8,850	7,850					7,850
	15.1	15.0	15.4	14.9	16.7	18.0	18.2	16.5					16.2